



PRODUCTS MANUAL

Shenzhen EN Plus Tech Co., Ltd.

Global Supplier for EV Charging Facilities
and Software Platform



Company Introduction

- Founded in 2015, total-solution supplier of EV charging station and cloud management system
- Top R&D team in China, rich experience in international protocol (OCPP 1.6J above)
- Full-range products, exported to over 40 countries and regions since 2016
- Independent capability of design, manufacture and sales, all-in-one service
- Product line covers Portable Charger, AC Charger, DC Charger, Power Module and Cloud Management System and Mobile App, all independently developed by ourselves



Global Partners



Certification



IATF 16949 Certification



ISO 9001 Quality Management System Certification



EN Plus Brand Trademark Registration Certification



National High-tech Enterprise Certification



Shenzhen High-tech Enterprise Certification



Management System Software Certification



Software Industry Association Member



Computer Software Copyright Registration Certification



National Patent Certification



Cape Certification



CQC Certification



CE Certification



Certification Test Report

Why Choose Us

Product Portfolio

- Rich Product Series & Certifications
- Versatile Software Ecosystem for Service
- Comprehensive Solutions for Scenario Applications

Production & Delivery

- Automotive-grade Quality Standards
- Fully Integrated Intelligent Production Line
- Digital Management System

Tech Innovation

- 100+ Independent R&D Patents
- Forward-looking Technology Research Reserves
- Efficient and Customized Services.

Service Support

- Global Market Service Capabilities
- Comprehensive Product Service Management
- 24/7 Online Support.





Memo Series Portable Box

Memo Series Portable Box adopts a wire-winding design for space-saving and easy carrying with EVs. It employs comprehensive electrical protection plus IP67 ingress proof and UV resistance to ensure charging safety.

EU Standard



Simple Use

- Portable, Plug to play
- Wire winding design, easy to carry

Legible Identification

- Clear LED light indication
- Charging status identification
- Color OLED

Robust Structure

- Corrosion proof
- IP67 ingress protection(body)

Security & Safe

- Over & residual protection on current, voltage &frequency
- Surge Protection
- Over temperature protection

Memo Series Portable Box

Datasheet	Model	AC3500-DE-20
Electrical Specification	Power Supply	1P+N+PE
	Rated Voltage	230V AC
	Rated Current	16A
	Frequency	50/60HZ
	Rated Power	3.5kW
Basic Attributes	Charge Connector	Type 2 Cable
	Cable Length	4m
	Enclosure	PC
	LED Indicator	Green/Yellow/Red
	Start Mode	Plug to play
Safety	Ingress Protection	IP67 (Body)
	Impact Protection	IK10 (W/O Screen)
	Electrical Protection	Over current protection, Residual current protection Surge protection, Over/Under voltage protection, Over/Under frequency protection, Over temperature protection
	Certification Standard	IEC 62752-2018 IEC61851-21-2:2021
	Warranty	2 Years
Working Environment	Operation Temperature	-30°C--+50°C
	Work Humidity	5%-95%
	Work Altitude	≤2000m
Package	Product Dimension	212*92*55mm (H*W*D)
	Package Dimension	300*130*270mm (L*W*H)
	Net Weight	1.9kg
	Gross Weight	2.5kg
	External Package	Handbag/Carton





Bello Series Home Wallbox

Bello Series designs to provide a stable and versatile charging environment for household use. The 7kW RFID active single-phase AC charger ensures 32A output current as a maximum. Its high compatibility allows charging for all Type 2 EV models.

EU Standard



Small Footprint Design

- A5 paper size equipment
- 4m wiring cables

Simple Operation

- Start/Stop charging by RFID card
- Simple HMI with LED indicators

Flexible Option

- Type 2 charging cable
- 16A/32A adjustable output current
- RFID authentication, optional with Plug to play
- Wall-mounted/floor-stand installation

Secure & Safe

- Over temperature protection
- Over & Residual current detection

Bello Series Home Wallbox

Datasheet	Model	AC7000-AE-05
Electrical Specification	Power Supply	1P+N+PE
	Rated Voltage	230V AC
	Rated Current	32A
	Frequency	50/60HZ
	Rated Power	7kW
Basic Attributes	Charge Connector	Type 2 Cable
	Cable Length	4m
	Enclosure	PC
Interactive Interface	LED Indicator	Green/Yellow/Red
	RFID Reader	Mifare ISO/IEC 14443A
	Start Mode	Plug to play/RFID
Safety	Ingress Protection	IP65
	Impact Protection	IK08
	Electrical Protection	Over current protection, Residual current protection Surge protection, Over/Under voltage protection, Over/Under frequency protection, Over temperature protection
	Certification Standard	EN IEC 61851-1:2019 IEC 61851-1:2017 IEC61851-21-2:2021
	Warranty	2 Years
Working Environment	Operation Temperature	-30°C-+50°C
	Work Humidity	5%-95%
	Work Altitude	≤2000m
Package	Product Dimension	233*150*70mm (H*W*D)
	Package Dimension	380*285*175mm (L*W*H)
	Net Weight	2.5kg
	Gross Weight	3.0kg
	External Package	Carton



Alvis Series Home Wallbox

The stylish Alvis Series Home Wallbox is perfect for Type 2 EV models. With network connectivity and OCPP 1.6 compatibility, it offers load balancing feature. Ideal for residential use, it combines style and functionality. It is certified with ETSI EN 303 645, ensuring network security for consumer IoT devices.

EU & UK Standard



Intelligent

- Connectivity: Wi-Fi+4G/Wi-Fi+Ethernet
- Smart mobile App control
- Scheduled charging
- OCPP 1.6 Json
- Dynamic load balancing

Flexible

- Type 2 cable
- Wall-mount/Pole-mount installation
- App operation/RFID authentication/Plug to play

Secure & Safe

- 30mA AC +6mA DC
- Relay-sticking protection



Alvis Series Home Wallbox

Datasheet	Model	AC7000-AE-45	AC7000-AB-45	AC011K-AE-25
Electrical Specification	Power Supply	1P+N+PE		3P+N+PE
	Rated Voltage	230V AC		400V AC
	Rated Current	32A		16A
	Frequency	50/60Hz		
	Rated Power	7kW		11kW
Basic Attributes	Product Standard	EU	UK	EU
	Charge Connector	Type 2 Cable		
	Cable Length	7m Cable (4m Optional)		
	Enclosure	PC		
	Installation	Wall-mount/Pole-mount (Optional)		
Interactive Interface	LED Indicator	Green/Yellow/Red		
	RFID Reader	Mifare ISO/IEC 14443 A		
	Start Mode	Plug to play/RFID Card/App		
Communication	Wi-Fi & Ethernet	Standard		Wi-Fi
	Wi-Fi & 4G	Optional		/
	Bluetooth	Hardware Ready		/
	OCPP	OCPP 1.6 Json		
Safety	RCD	30mA Type A+6mA DC		
	Ingress Protection	IP65		
	Impact Protection	IK08		
	Electrical Protection	Over current protection, Residual current protection Surge protection, Over/Under voltage protection, Over/Under frequency protection, Over temperature protection		
	Certification	CE/CB/RoHS	UKCA/EN 303645	CE/CB/RoHS
	Certification Standard	IEC 61851-1:2017 EN IEC 61851-1:2019 EN IEC 61851-21-2:2021 EN IEC 61000-6-1:2019 EN IEC 61000-6-3:2007+A1 EN 300 328 V2.2.2:2019 EN 300 330 V2.1.1:2017 EN 301 489-1 V2.2.3:2019 EN 301 489-3 V2.1.1:2019 EN 301 489-17 V3.2.0:2017 EN 62311:2020 BS 7671:2018+A2:2022		
	Warranty	2 Years		
Working Environment	Operation Temperature	-30℃ ~+50℃		
	Work Humidity	5%-95%		
	Work Altitude	≤2000m		
Package	Product Dimension	328*181*87mm (H*W*D)		
	Package Dimension	420*280*190mm (L*W*H)		
	Net Weight	3.2kg		
	Gross Weight	4.0kg		
	External Package	Carton		



Caro Series Home Wallbox

Caro Series Home Wallbox, a 2023 Red Dot Award winner, adds elegance to any charging location, be it at home, in business settings, or semi-public areas. Solar power-compatible for eco-friendly charging, its intelligent load management system reduces grid peak pressures. Experience powerful load balancing with up to 20 chargers on a single circuit. Enjoy the flexibility of 1A grid charging, optimizing energy usage with seamless PV integration.

EU & UK Standard



Versatile

- Type 2 cable/socket
- Wall-mount/Pole-mount installation
- Three enclosure colors
- Activated by NFC

Intelligent

- Communications: Wi-Fi+4G+Bluetooth/Wi-Fi+Ethernet+Bluetooth
- App charging scheduling
- Dynamic load balancing with LBC

PV Compatible

- 0 emission PV charging
- Seamless integration with PV systems
- Adjustable current for optimized PV usage

Safe & Convenient

- 30mA AC + 6mA DC
- Relay-sticking protection



Pearl White



Space Black



Emerald Green



Type Approved
Safety
Regular Production
Surveillance
www.tuv.com
ID: 1017109143



EN 303 645 (UK Standard Only)

Caro Series Home Wallbox

Datasheet	Model	AC7000-AE-35 AC7000-AB-45C	AC7000-BE-35	ACO11K-AE-35	ACO11K-BE-35
Electrical Specification	Power Supply	1P+N+PE		3P+N+PE	
	Rated Voltage	230V AC		400V AC	
	Rated Current	32A		16A	
	Frequency	50/60Hz			
	Rated Power	7kW		11kW	
Basic Attributes	Product Standard	AE: EU / AB: UK	EU	EU	EU
	Charge Connector	Type 2 Cable	Type 2 Socket	Type 2 Cable	Type 2 Socket
	Cable Length	7m Cable (4m Optional)	/	7m Cable (4m Optional)	/
	Enclosure	PC			
	Installation	Wall-mount/Pole-mount (Optional)			
Interactive Interface	LED Indicator	Green/Yellow/Red			
	RFID Reader	Mifare ISO/IEC 14443 A			
	Start Mode	Plug to play/RFID Card/App			
Communication	Wi-Fi & Bluetooth & Ethernet	Standard			
	Wi-Fi & Bluetooth & 4G	Optional			
	OCPP	OCPP 1.6 Json			
Safety	RCD	30mA Type A + 6mA DC			
	Ingress Protection	IP65	IP54	IP65	IP54
	Impact Protection	IK08			
	Electrical Protection	Over current protection, Residual current protection Surge protection, Over/Under voltage protection, Over/Under frequency protection, Over temperature protection			
	Certification	AE: CE/CB/RoHS AB: UKCA/ EN 303645	CE/CB/RoHS		
	Certification Standard	IEC 61851-1:2017 EN IEC 61851-1:2019 EN IEC 61851-21-2:2021 EN IEC 61000-6-1:2019 EN IEC 61000-6-3:2007+A1 EN 300 328 V2.2.2:2019 EN 300 330 V2.1.1:2017 EN 301 489-1 V2.2.3:2019 EN 301 489-3 V2.1.1:2019 EN 301 489-17 V3.2.0:2017 EN 62311:2020 BS 7671:2018+A2:2022			
	Warranty	2 Years			
Working Environment	Operation Temperature	-30℃ ~+50℃			
	Work Humidity	5%-95%			
	Work Altitude	≤2000m			
Package	Product Dimension	344*192*100mm (H*W*D) Cable 344*192*135mm (H*W*D) Socket			
	Package Dimension	430*330*235mm (L*W*H) Cable 430*245*210mm (L*W*H) Socket			
	Net Weight	3.8kg	1.8kg	3.9kg	2.0kg
	Gross Weight	5.2kg	2.5kg	5.6kg	2.7kg
	External Package	Carton			

Caro Pro Series Home Wallbox

Caro Pro Series Home Wallbox embodies simplicity and environmental responsibility. Not only does this wallbox support PV charging, it also incorporates dynamic load balancing to relieve the grid during peak hours. By harnessing solar power for eco-friendly charging, it helps reduce electricity costs and meets your green objectives. Its intelligent load management ensures optimised energy use through seamless PV integration.

EU & UK Standard



Versatile

- Customizable enclosure choice
- Activated by RFID
- Convenient back plate for easy cable access

Intelligent

- Multi communications
- App charging scheduling
- Dynamic load balancing

PV Compatible

- 0 emission PV charging
- Seamless integration with PV systems
- Adjustable current for optimized PV usage

Safe & Convenient

- 30mA AC+6mA DC
- Relay-sticking protection
- Ergonomic and user-friendly enclosure design



EN 303 645

Caro Pro Series Home Wallbox

Datasheet	Model	AC022K-AB-45C2		AC022K-AE-45C2
Electrical Specification	Power Supply	3P+N+PE		
	Rated Voltage	400V AC		
	Rated Current	32A		
	Frequency	50/60 HZ		
	Rated Power	22kW		
Basic Attributes	Product Standard	UK	EU	
	Charge Connector	Type 2 Cable		
	Cable Length	7m(4m Optional)		
	Enclosure	PC		
	Installation	Wall-mount/Pole-mount(Optional)		
Interactive Interface	LED Indicator	Green/Yellow/Red		
	RFID Reader	Mifare ISO/IEC14443A		
	Start Mode	Plug to play/RFID card/App		
Communication	Wi-Fi & Ethernet & Bluetooth & 4G	Standard		
	OCPP	OCPP 1.6 Json		
Safety	RCD	30mA Type A + 6mA DC		
	Ingress Protection	IP65		
	Impact Protection	IK10		
	Electrical Protection	Over current protection,Residual current protection,Surge protection,Over/Under voltage protection,Over/Under frequency protection,Over temperature protection		
	Certification	CE, CB, RoHS, Reach, EN 303645		
	Certification Standard	IEC 61851-1:2017 EN IEC 61851-1:2019 EN IEC 61851-21-2:2021 EN IEC 61000-6-1:2019 EN IEC 61000-6-3:2007+A1 EN 300 328 V2.2.2:2019 EN 300 330 V2.1.1:2017 EN 301 489-1 V2.2.3:2019 EN 301 489-3 V2.1.1:2019 EN 301 489-17 V3.2.0:2017 EN 62311:2020 BS 7671:2018+A2:2022		
	Warranty	2 years		
Working Environment	Noise	≤60dB		
	Operation Temperature	-30℃ ~+50℃		
	Work Humidity	5%-95%		
	Work Altitude	≤2000m		
Package	Product Dimension	373.8*226*164.2 mm		
	Package Dimension	430*330*235 mm		
	Net Weight	3.45kg		
	Gross Weight	6.75kg		
	External Packing	Carton		



Saro Series Home Wallbox

Saro Series Home Wallbox is designed to meet the demanding needs of homeowners. It offers a variety of connectivity options and features a compact, space-saving design. With its dynamic load management system, users can enjoy cost-effective charging solutions. It is also easy to operate and maintain via a user-friendly app or software system, ensuring maximum flexibility and convenience.

EU & UK Standard



Versatile

- Type 2/T2S Socket
- Customizable enclosure choice
- Activated by RFID
- Convenient back plate for easy cable access

Intelligent

- Multi communications(Wi-Fi/4G/Ethernet)
- App charging scheduling
- Dynamic load balancing

PV Compatible

- 0 emission PV charging
- Seamless integration with PV systems
- Adjustable current for optimized PV usage

Safe & Convenient

- 30mA AC+6mA DC
- Relay-sticking protection
- Ergonomic and user-friendly enclosure design



EN 303 645

Saro Series Business Wallbox

Datasheet	Model	AC022K-BE-45S1 AC022K-BB-45S1	AC022K-AE-45S1 AC022K-AB-45S1	AC022K-TE-45S1
Electrical Specification	Power Supply	3P+N+PE		
	Rated Voltage	400V AC		
	Rated Current	32A		
	Frequency	50/60 HZ		
	Rated Power	22KW		
Basic Attributes	Product Standard	BE: EU / BB: UK	AE: EU / AB: UK	FR
	Charge Connector	Type 2 Socket	Type 2 Cable	T2S Socket
	Cable Length	/	7m	/
	Enclosure	PC		
	Installation	Wall-mount/Pole-mount(Optional)		
Interactive Interface	LED Indicator	Green/Yellow/Red		
	RFID Reader	Mifare ISO/IEC14443A		
	Start Mode	Plug to play/RFID card/App		
Communication	Wi-Fi & Ethernet & Bluetooth & 4G	Standard		
	OCPP	OCPP 1.6 Json		
Safety	RCD	30mA Type A + 6mA DC		
	Ingress Protection	IP54	IP65	IP54
	Impact Protection	IK10		
	Electrical Protection	Over current protection,Residual current protection,Surge protection,Over/Under voltage protection,Over/Under frequency protection,Over temperature protection		
	Certification	CE, CB, RoHS, Reach, EN 303645		
	Certification Standard	IEC 61851-1:2017 EN IEC 61851-1:2019 EN IEC 61851-21-2:2021 EN IEC 61000-6-1:2019 EN IEC 61000-6-3:2007+A1 EN 300 328 V2.2.2:2019 EN 300 330 V2.1.1:2017 EN 301 489-1 V2.2.3:2019 EN 301 489-3 V2.1.1:2019 EN 301 489-17 V3.2.0:2017 EN 62311:2020 BS 7671:2018+A2:2022		
	Warranty	2 years		
Working Environment	Operation Temperature	-30℃ ~+50℃		
	Work Humidity	5%~95%		
	Work Altitude	≤2000m		
Package	Product Dimension	373.8x226x173.5 mm	373.8x226x164.2 mm	373.8x226x173.5 mm
	Package Dimension	430*330*235 mm		
	Net Weight	2.55kg	3.45kg	2.55kg
	Gross Weight	3.5 kg	6.75kg	3.5 kg
	External Packing	Carton		



Vita Series Business Wallbox

Vita Series Business Wallbox prioritizes safety and efficiency, complying with UK's EVSCP & EU standards. It seamlessly integrates into any setup. Effortlessly manage your charging through the cloud platform and remote maintenance. The sleek design ensures easy installation, while Wi-Fi & Ethernet connectivity enables convenient control via the mobile app. Rest assured, the MID certified energy meter guarantees the utmost accuracy in your charging experience.

EU & UK Standard



Simple

- Temper glass front panel
- Robust enclosure
- Easy installation
- Vinyl branding options available

Flexible

- Type 2 cable/Type 2 socket
- Wall-mount/ Pole-mount installation
- App operation/RFID authentication/Plug to play

Intelligent

- Communications:
Wi-Fi+4G/Wi-Fi+Ethernet
- Smart mobile App control
- 2.7" B&W information display
- OCPP 1.6 Json

Secure & Safe

- 30mA AC+6mA DC
- Independent RCBO
- MID certified energy meter with accurate measurement



Vita Series Business Wallbox

Datasheet	Model	AC7000-AE-44	AC7000-BE-44 AC7000-BB-44	AC022K-AE-44	AC022K-BE-44 AC022K-BB-44
Electrical Specification	Power Supply	1P+N+PE		3P+N+PE	
	Rated Voltage	230V AC		400V AC	
	Rated Current	32A		32A	
	Frequency	50/60Hz			
	Rated Power	7kW		22kW	
Basic Attributes	Product Standard	EU	BE: EU / BB: UK	EU	BE: EU / BB: UK
	Charge Connector	Type 2 Cable	Type 2 Socket	Type 2 Cable	Type 2 Socket
	Cable Length	7m(4m Optional)	/	7m(4m Optional)	/
	Enclosure	PC		Galvanized Steel+Temper Glass	
	Installation	Wall-mount/Pole-mount (Optional)			
Interactive Interface	LED Indicator	Green/Yellow/Red			
	LCD Display	2.7" Black & White LCD			
	RFID Reader	Mifare ISO/IEC 14443 A			
	Start Mode	Plug to play/RFID Card/App			
Communication	Wi-Fi & Ethernet	Standard			
	Wi-Fi & 4G	Standard			
	Bluetooth	Hardware Ready			
	OCPP	OCPP 1.6 Json			
Safety	RCD	30mA Type A + 6mA DC			
	RCBO	Type A			
	Energy Meter	MID Certified			
	Ingress Protection	IP65	IP54	IP65	IP54
	Impact Protection	IK08			
	Electrical Protection	Over current protection, Residual current protection Surge protection, Over/Under voltage protection, Over/Under frequency protection, Over temperature protection			
	Certification	CE/CB/Pen Fault/UKCA			
	Certification Standard	IEC 61851-1:2017 EN IEC 61851-1:2019 EN IEC 61851-21-2:2021 EN IEC 61000-6-1:2019 EN IEC61000-6-2/-4: 2019 EN IEC 61000-6-3:2007+A1 EN 300 328 V2.2.2:2019 EN 300 330 V2.1.1:2017 EN 301 489-1 V2.2.3:2019 EN 301 489-3 V2.1.1:2019 EN 301 489-17 V3.2.0:2017 EN 62311:2020 BS 7671:2018+A2:2022			
	Warranty	2 Years			
Working Environment	Operation Temperature	-30℃ --+50℃			
	Work Humidity	5%-95%			
	Work Altitude	≤2000m			
Package	Product Dimension	356*211*136mm (H*W*D)		452*295*148mm (H*W*D)	
	Package Dimension	490*340*210mm (L*W*H)		570*390*220mm (L*W*H)	
	Net Weight	5.6kg Cable	3.2kg Socket	13.5kg	9.7kg
	Gross Weight	6.4kg Cable	4.2kg Socket	15.5kg	11.6kg
	External Package	Carton			



Nano Series Duo Wallbox

The Nano Series is a new generation of 2X22kW AC chargers, available in both commercial and home versions, suitable for use in residential communities, commercial properties, and private settings. It supports remote parameter viewing and control, Ad Hoc, and card activation. It has 8 built-in safety protection functions to ensure user safety. It can be equipped with a wireless router that supports full network access or be wire connected to the network. Smart solutions such as load balancing is also available to save costs and facilitate management.

EU & UK Standard



Innovative

- Type 2 socket / cable, 2x11kW / 1x22kW / 2x22kW simultaneously
- Suitable for home & semi-public use
- Easy to install by plugging back plate
- Installation cost saving

Intelligent

- Communications:
Wi-Fi+4G+Bluetooth+Ethernet
- OCPP 1.6 Json
- Dynamic load balancing with LBC

Flexible

- Compatible with all EV & PHEV models
- App operation/RFID authentication/Plug to play
- Optional socket and cable version
- Option to select MID meter or opt out

Secure & Safe

- 30mA AC+6mA DC
- Independent RCBO
- MID certified energy meter with accurate measurement
- IK10



Nano Series Duo Wallbox

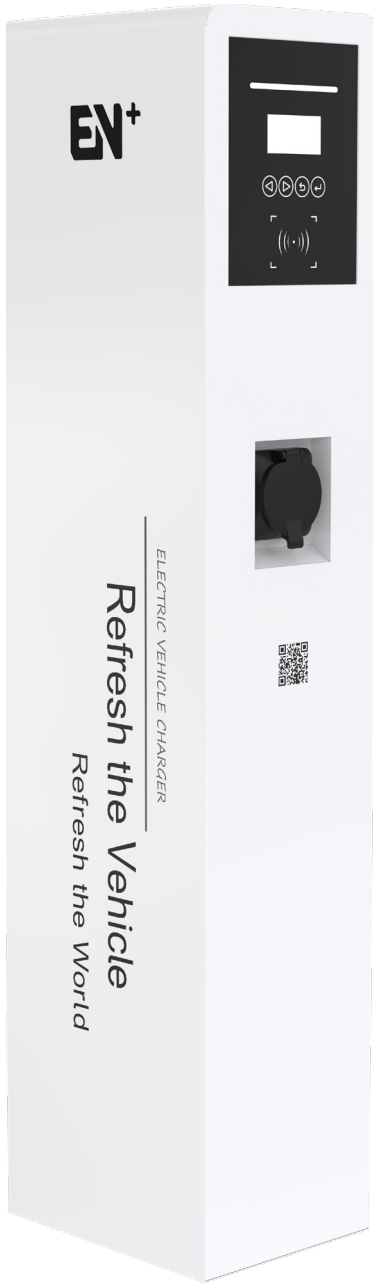
Datasheet	Model	AC022K-BE-44D	AC022K-AE-44D	AC044K-BE-44D	AC044K-AE-44D
Electrical Specification	Power Supply	3P+N+PE			
	Rated Voltage	400V AC±20%			
	Rated Current	32A		2x32A	
	Frequency	50/60Hz			
	Rated Power	2*11KW/1*22KW		2*22KW	
	Power Measurement Accuracy	1% with MID			
Classic Attributes	Charge Connector	Type 2 Socket	Type 2 Cable	Type 2 Socket	Type 2 Cable
	Cable Length	/	7m	/	7m
	Enclosure	PC			
	Installation	Wall-mount/Pole-mount(Optional)			
Interactive Interface	LED Indicator	Green/Yellow/Red			
	Screen	/			
	RFID Reader	Mifare ISO/IEC14443A			
	Start Mode	Plug to play/RFID card/App			
Communication	Wi-Fi & Ethernet & Bluetooth	Standard			
	4G	Standard			
	OCPP	OCPP 1.6 Json			
Safety	RCD	30mA Type A + 6mA DC			
	RCBO	Type A			
	Ingress Protection	IP54			
	Impact Protection	IK10			
	Electrical Protection	Over current protection,Residual current protection,Surge protection,Over/Under voltage protection,Over/Under frequency protection,Over temperature protection			
	Certification	CE/CB/RoHS/Reach			
	Certification Standard	IEC 61851-1:2017 EN IEC 61851-1:2019 EN IEC 61851-21-2:2021 ENIEC 61000-6-1:2019 EN IEC 61000-6-3:2007+A1 EN 300 328 V2.2.2:2019 EN 300 330 V2.1.1:2017 EN 301 489-1 V2.2.3:2019 EN IEC61000-6-2/-4:2019 EN 301 489-3 V2.1.1:2019 EN 301 489-17 V3.2.0:2017 EN 62311:2020 BS 7671:2018+A2:2022			
	Warranty	2 Years			
	Working Environment	Operation Temperature	-30℃ ~+50℃		
Work Humidity		5%-95%			
Work Altitude		≤2000m			
Package	Product Dimension	540*360*199mm (H*W*D)	540*360*199mm (H*W*D)	540*360*199mm (H*W*D)	540*360*199mm (H*W*D)
	Package Dimension	620*466*245mm (L*W*H)	635*430*345mm (L*W*H)	620*466*245mm (L*W*H)	635*430*345mm (L*W*H)
	Net Weight	10kg	20kg	10kg	20kg
	Gross Weight	12.2kg	20.9kg	12.2kg	20.9kg
	External Packing	Carton			



Cubo Series AC Charger

Cubo Series AC Charger offers simultaneous dual charging. With high-output capability and flexible modes, it achieves extensive compatibility. Its sleek design is customizable, allowing for personalized branding. Advanced safety features ensure secure charging in any environment.

EU Standard



Minimalistic

- Compact, slimline enclosure
- Built-in socket holder
- Easy installation

Flexible

- Type 2 cable
- Wall-mount/Floor-stand installation
- App operation/RFID authentication/Plug to play

Intelligent

- Communications:
Wi-Fi+4G+Bluetooth/Wi-Fi+Ethernet+Bluetooth
- Smart mobile App control
- Scheduled charging– for low tariffs
- OCPP 1.6 Json
- Dynamic load balancing

Secure & Safe

- 30mA AC + 6mA DC
- Independent RCBO
- MID certified energy meter with accurate measurement



Cubo Series AC Charger

Datasheet	Model	AC014K-BE-34	AC044K-BE-34
Electrical Specification	Power Supply	1P+N+PE	3P+N+PE
	Rated Voltage	230V AC	400V AC
	Rated Current	2X32A	2X32A
	Frequency	50/60Hz	
	Rated Power	2x7kW	2x22kW
Basic Attributes	Charge Connector	2xType 2 Socket (2xType 2 Cable Optional)	
	Enclosure	Galvanized Steel+Temper Glass	
	Installation	Pole-mount	
Interactive Interface	LED Indicator	Green/Yellow/Red	
	LCD Display	2.7"Black & White	
	RFID Reader	Mifare ISO/IEC 14443A	
	Start Mode	Plug to play/RFID Card/App	
Communication	Wi-Fi & Bluetooth & Ethernet	Yes	
	Wi-Fi & Bluetooth & 4G	Yes	
	OCPP	OCPP 1.6 Json	
Safety	RCD	30mA AC + 6mA DC	
	RCBO	Type A	
	Energy Meter	MID Certified	
	Ingress Protection	IP54	
	Impact Protection	IK08	
	Electrical Protection	Over current protection, Residual current protection, Short circuit protection, Surge protection, Over/Under voltage protection, Over/Under frequency protection, Over temperature protection	
	Certification	CE/CB	
	Certification Standard	EN IEC 61851-1:2019 IEC61851-1:2017 IEC61851-21-2:2021	
	Warranty	2 Years	
Working Environment	Operation Temperature	-30℃ - +50℃	
	Work Humidity	5%-95%	
	Work Altitude	≤2000m	
Package	Product Dimension	1200*290*230mm (H*W*D)	
	Package Dimension	1318*434*357mm (L*W*H)	
	Net Weight	28.5kg	27.5kg
	Gross Weight	48.5kg	45.0kg
	External Package	Wood Case	

Corebox Series DC Charger

Corebox Series DC Charger is designed for efficiency and convenience, it delivers high-speed charging to keep you on the move. With its intelligent features, it offers seamless integration with smart grids, load balancing, and remote monitoring capabilities. The sleek and compact design fits perfectly into any environment, while the user-friendly interface provides a hassle-free experience. Equipped with advanced safety features and compatibility with various EV models, this DC charger is the perfect solution for both commercial and public charging stations.

EU Standard



Innovative

- Anti-theft lock with special unlock tool
- App control & operation
- Faster charging with smaller installation space

Intelligent

- OCPP 1.6 Json

Flexible

- Wall-mount/Pole-mount (Optional)
- Start modes: RFID/App/Plug to Play

Secure and Safe

- Modular design, easy to repair and replace
- Emergency stop switch, improving the safety



Corebox Series DC Charger

Datasheet	Model	DC030K
Electrical Specification	Power Supply	3P+N+PE
	Input Voltage	400V ±10% AC
	Input Current	47A
	Input Frequency	50/60HZ
	Output Voltage	200-1000V DC
	Maximum Current	80A
	Maximum Output Power	30kW
Basic Attributes	Charge Connector	CCS2
	Cable Length	5m
	Enclosure	Galvanized Steel
	Installation	Wall-mount/Pole-mount (Optional)
Interactive Interface	LED Indicator	Green/Yellow/Red
	LCD Display	4.3' Color Touch Display
	RFID Reader	Support
	Start Mode	App/QR/RFID Card/Credit Card (Optional)
Communication	Wi-Fi	Yes
	Ethernet	Yes
	4G	Yes
	OCPP	OCPP 1.6 Json
Electrical Parameter	Efficiency	Max95.5%
	Power Factor	≥0.99@50%-100%
Loading	THD	≤5%@100%Loading
	Ripple Factor	≤±1%
Safety	RCD	Optional
	Emergency Stop	Yes
	Ingress Protection	IP54
	Impact Protection	IK10 (With screen IK08)
	Electrical Protection	Over current protection, Residual current protection, Short circuit protection, Surge protection, Over/Under voltage protection, Over/Under frequency protection, Over/Under temperature protection
	Certification	CE/CB
	Certification Standard	EN IEC 61851-1 : 2019, EN 61851-23 : 2014, EN 61851-24:2014 EMC : EN 301489-1 V 2.2.3 : 2019 EN 301489-3 V 2.1.1 : 2019 EN 301489-17 V 3.2.0 : 2017 EN IEC 61000-6-2 : 2019 EN IEC 61000-6-4 : 2019 EN IEC 61851-21-2 : 2021 EN IEC 62311 : 2020
	Warranty	2 Years
Working Environment	Cooling Method	Fan Cooling
	Noise	≤65dB@22°C
	Operation Temperature	-30°C ~+60°C
	Work Humidity	5%~95%
	Work Altitude	<2000m
Package	Product Dimension	706*570*209mm (W*D*H)
	Package Dimension	846*772*412mm (W*D*H)
	Net Weight	35.3kg (with power module) 18.3kg (without power module)
	Gross Weight	40.0kg (with power module) 23kg (without power module)
	External Package	Carton

Mobox Series DC Charger

Mobox Series DC Charger features an integrated portable design characterised by compact size and lightweight construction. This design allows for quick power connection, easy mobility and convenient vehicle transport.

EU Standard



Innovative

- Anti-theft screw
- App control & operation
- Faster charging with smaller installation space

Intelligent

- 10' touch display
- OCPP 1.6 Json (OCPP 2.0 upgradeable)

Flexible

- Wall-mount/Pole-mount/Movable
- Start Mode: App/QR code/RFID Card/POS(Optional)

Secure and Safe

- Modular design, easy to repair and replace
- IP54 high ingress protection level
- MID Meter(Optional)



Mobox Series DC Charger

Datasheet	Model	DC030K	DC040K
Electrical Specification	Power Supply	3P+N+PE	3P+N+PE
	Input Voltage	400V AC	
	Input Current	47A	63A
	Input Frequency	50/60HZ	
	Output Voltage	200~1000V DC	
	Maximum Output Current	100A	133.3A
	Maximum Output Power	30kW	40kW
Basic Attributes	Charge Connector	Standard:CCS2 Customizable:CHAdeMO/GBT/CCSI	
	Number of Cable	1	
	Cable Length	5m	5m
	Enclosure	Galvanized Steel	Galvanized Steel
	Installation	Wall-mount/Pole-mount(Optional)/Movable(Optional)	
Interactive Interface	LED Indicator	Green/Yellow/Red	
	LCD Display	10' Color Touch Display	
	RFID Reader	Mifare ISO/IEC 14443A	
	Start Mode	App/QR code/RFID Card/POS(Optional)	
Communication	Wi-Fi & Ethernet	Standard	
	4G	Optional	
	OCPP	OCPP 1.6 Json	
Electrical Parameter	Efficiency	Max95.5%	
	Power Factor	≥0.99@50%~100%Loading	
	THD	≤5%@100%Loading	
	Ripple Factor	≤±1%	
Safety	RCD	Type A(Optional)	
	Emergency Stop	Yes	
	Ingress Protection	IP54	
	Impact Protection	IK10(w/o IK08)	
	Electrical Protection	Over current protection, Residual current protection, Short circuit protection, Surge protection, Over/Under voltage protection, Over/Under frequency protection, Over/Under temperature protection	
	Certification	CE/CB	
	Certification Standard	EN IEC 61851-1:2019 IEC 61851-1:2017 IEC 61851-21-2:2021 EN 61851-23:2014 EN 61851-24:2014	
	Warranty	2 Years	
Working Environment	Cooling Method	Fan Cooling	
	Noise	≤65dB@22°C	
	Operation Temperature	-30°C ~+50°C	
	Work Humidity	5%~95%	
	Work Altitude	<2000m	
Package	Product Dimension	550*850*300mm(W*H*D)	
	Package Dimension	650*960*400mm(W*D*H)	
	Net Weight	75kg(with power module)55kg(without power module)	
	Gross Weight	90kg(with power module)70kg(without power module)	
	External Package	Wood Case	



Turbo Series DC Charger

Turbo Series DC Charger, delivering lightning-fast charging speeds ranging from 60-120kW. Designed for high-powered performance, it keeps electric vehicles on the road in no time. Seamlessly integrating with smart grids, it optimizes energy usage and enables remote monitoring and control. The sleek and robust design ensures durability and easy installation in any environment. Equipped with advanced safety features and compatibility with various electric vehicle models, this smart DC charger offers fast, efficient, and future-proof charging.

EU Standard



Efficient

- One charger with multiple outputs, simultaneously charging
- Output up to 120kW
- Support full power output for 300A cable(PRO)

Flexible

- App operation/RFID authentication/Plug to Play
- CCS2 as standard, CHAdeMO, CCS1 and GB/T support is customizable
- Flexible allocation of 30kW granularity (PRO)
- Optional with POS machine & cable management
- Multi-language support

Intelligent

- Ethernet/4G/Wi-Fi communication all supported
- OCPP 1.6 Json
- Intelligent operation by App and cashless payment

Secure & Safe

- Full level of electrical protection
- IK10(with screen IK08) impact protection
- MID Meter(Optional for Pro)



Turbo Series DC Charger

Datasheet	Model	DC060K-E2		DC120K-E2		DC120K
Electrical Specification	Power Supply	3P+N+PE				
	Rated Voltage	3Φ4W 400V AC ±15%				
	Rated Current	96A		190A		
	Frequency	50/60Hz				
	Output Voltage	200-1000V DC	400V AC	200-1000V DC	400V AC	200-1000V DC
	Maximum Current	200A	32A	200A	32A	300A
	Rated Power	60kW	22kW	120kW	22kW	120kW
Basic Attributes	Charge Connector	CCS2+CCS2 CCS2+CHAdEMO *CHAdEMO 125A	Type 2 Cable (Optional)	CCS2+CCS2 CCS2+CHAdEMO *CHAdEMO 125A	Type 2 Cable (Optional)	2*Multiple Connector: CCS2 300A CCSI 300A GB/T 250A CHAdEMO 150A
	Cable Length	5m				
	Enclosure	Galvanized Steel				
	Installation	Floor Stand				
	Cable Management	Optional				
Interactive Interface	LED indicator	Green/Yellow/Red				
	LCD Display	10.1' Color Touch Display				
	RFID Reader	Support ISO14443A/Felica				
	Start Mode	App/QR code/RFID Card/POS(Optional)				
Communication	Ethernet	Yes				
	4G	Optional				
	OCPP	OCPP 1.6 Json				
Electrical Parameter	Efficiency	Max95.5%				
	Power Factor	≥0.99@50%-100%Loading				
	THD	≤5%@100%Loading				
	Ripple Factor	≤±1%				
Safety	RCD	Type A(Optional)				
	Emergency Stop	Yes				
	Ingress Protection	IP54				
	Impact Protection	IK10(without screen)				
	Electrical Protection	Over current protection, Residual current protection,Short circuit protection, Surge protection,Over/Under voltage protection, Over/Under frequency protection,Over/Under temperature protection				
	Certification	CHAdEMO Protocol Rev. 2.0.2				
	Certification Standard	IEC 61851-1:2017 IEC 61851-21-2:2021 IEC 61851-23:2014				
	Warranty	2 Years				
Working Environment	Cooling Method	Fan Cooling				
	Noise	≤65dB@22°C				
	Operation Temperature	-30° C ~+50° C				
	Work Humidity	5%-95%				
	Work Altitude	<2000m				
Package	Product Dimension	750*525*1830mm(W*D*H) Cable Management: 320mm*200mm*710mm(W*H*D)				
	Package Dimension	1030*620*2100mm(W*D*H) Cable Management: 1200mm*440mm*365mm(W*D*H)				
	Net Weight	228kg				
	Gross Weight	268kg				
	Cable Management Weight	Net Weight: 27kg Gross Weight: 33kg				
	External Package	Wood Case				

Rocket Series DC Charger

The Rocket Series DC Charger uses a 40kW constant power module to reduce charging time with high current output. It smartly allocates power to meet different vehicle charging needs for safe and fast charging. With IP54 protection, it adapts to all weather conditions and has multiple protection functions for user safety. Maintenance is easy with support for remote OTA upgrades and operation/maintenance platforms.

EU Standard



Ongoing project, data may be modified

Efficient

- CCS2 as standard, CCS1, CHAdeMO and GB/T support is customizable
- Two connectors up to 300kW in total
- Wide voltage range: 200-1000V DC

Optional

- App/RFID/Plug to play/QR Code
- POS terminal with contactless card payment

Intelligent

- Multiple communication: Ethernet/4G/Wi-Fi
- OCPP 1.6 Json with CMS(OCPP 2.0 upgradeable)
- E-payment through App/POS

Secure & Safe

- Ingression protection: IP54
- MID Meter(Optional)




Rocket Series DC Charger

Datasheet	Model	DC300K	DC240K	DC180K
Electrical Specification	Power Supply	3P+N+PE		
	Input Voltage	400V AC		
	Input Current	470A	376A	282A
	Input Frequency	50/60Hz		
	Output Voltage	200-1000V DC		
	Maximum Current	500A		
	Rated Power	300kW	240kW	180kW
Basic Attributes	Charge Connector	Standard: CCS2*2 Customizable: CHAdeMO: 150A GBT: 250A CCSI: 300A		
	Cable Length	5m		
	Enclosure	Galvanized Steel		
	Installation	Floor Stand		
Interactive Interface	LED indicator	Green/Yellow/Red		
	LCD Display	10.1" Color (Touch Display)		
	Start Mode	App/QR/RFID Card/POS (Optional)		
Communication	Wi-Fi	Yes		
	Ethernet	Yes		
	4G	Optional		
	OCPP	OCPP 1.6 Json		
Electrical Parameter	Efficiency	Max95.5%		
	Power Factor	≥0.99@50%~100%Loading		
	THD	≤5%@100%Loading		
	Ripple Factor	≤±1%		
Safety	RCD	Optional		
	Emergency Stop	Yes		
	Ingress Protection	IP54		
	Impact Protection	IK10(With Screen IK08)		
	Electrical Protection	Over current protection, Residual current protection,Short circuit protection, Surge protection,Over/Under voltage protection, Over/Under frequency protection,Over/Under temperature protection		
	Certification	CE/CB		
	Certification Standard	EN IEC 61851-1:2019 IEC 61851-1:2017 IEC 61851-21-2:2012 EN 61851-23:2014 EN 61851-24:2014		
Working Environment	Cooling Method	Fan Cooling		
	Noise	≤65dB@22°C		
	Operation Temperature	-30°C ~+50°C		
	Work Humidity	5%~95%		
	Work Altitude	<2000m		
Package	Product Dimension	Charger: 800*666*2000mm (W*D*H) Cable Management: 320mm*200mm*710mm(W*H*D)		
	Package Dimension	Charger: 1080*818*2200mm (W*D*H) Cable Management:1200mm*440mm*365mm(W*D*H)		
	Net Weight	490kg 330kg w/o power module	430kg 330kg w/o power module	370kg 330kg w/o power module
	Gross Weight	540kg 380kg w/o power module	480kg 380kg w/o power module	420kg 380kg w/o power module
	Cable Management Weight	Net Weight: 27kg Gross Weight: 33kg		
	External Package	Wood Case		

Power Module


The EN Plus 30kW DC power module is a top industrial solution designed specifically for large EV chargers. It utilizes cutting-edge power electronics technology, resulting in an impressive 96.2% efficiency and just 6W standby power consumption. This translates to significant energy savings and a reduced environmental impact. The module's ultra-wide constant output voltage range guarantees compatibility with all EV models. Its unique protection design enhances reliability and extends the service life of EV chargers, while the remote OTA function reduces operating costs for users. The module has passed TÜV CE certificate and meets EMC CLASS B requirements, ensuring its quality and safety.






≤6W

Standby Power




96.2%

Efficiency



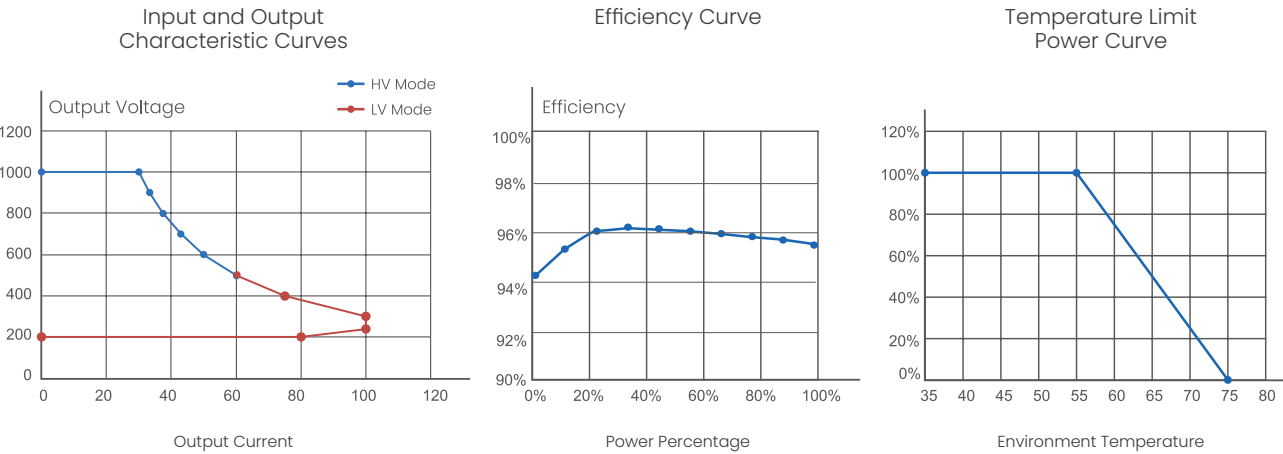
-40°C~+75°C

Working Temperature



200~1000VDC

Wide Output Voltage Range



Power Module

Datasheet	Model	DCM1000100E
Input	Power Supply	3P+PE
	Rated Voltage	260~470V AC
	Max. Input Current	60A
	Frequency	50/60Hz
	Standby Power	≤6W
Output	Maximum Power	200~1000V DC
	Max. Current	100A
	Rated Power	30kW
	Constant Power	300~1000V DC
Electrical Parameter	Power Factor	≥0.99@50%-100% Loading
	THD	≤5%@100% Loading
	Efficiency	Max 96.2%
	Steady Voltage Accuracy	≤±0.5%
	Steady Current Accuracy	≤±1%
	Voltage Deviation	≤±0.5%
	Current Deviation	≤±0.15A@ Load Current<15A, ≤±1 Load Curent≥15A
	Ripple Factor	Peak Factor≤1%, RMS Factor<0.5%
	Soft Start Time	≤6s
User Interface	Enclosure	Aluminized Zinc Plate(SGLCC)
	LED Indicator	Green/Yellow/Red
Communicaton	Configuration	Manual/Auto
	Protocol	CAN
Safety	Ingress Protection	IP20
	Electrical Protection	Over current protection, Residual current protection, Short circuit protection, Surge protection, Over/Under voltage protection, Over/Under frequency protection, Over/Under temperature protection
	Certification	CE/TUV Mark/CB/UKCA/RoHS
	Certification Standard	EN IEC 61851-1:2019 IEC 61851-21-2:2021 Class B EN 61851-23:2014
	Warranty	2 Years
EMC/EMI	Standard	EN IEC 61851-21-2:2021 Class B
Environment	Installation	Slots
	Cooling Method	Smart Air Cooing
	Noise	≤65dB@25°C 100% loading
	Work Temperature	-40°C ~+75°C (derate > 55°C)
	Work Humidity	5%~95%
Package	Work Altitude	<2000m
	Product Dimension	455*300*94mm (D*W*H)
	Package Dimension	564*380*72mm (L*W*H)
	Net Weight	17.0kg
	Gross Weight	18.0kg
	External Package	Carton

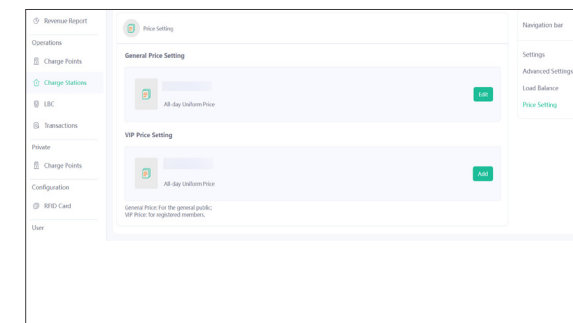
Cloud Platform

Dedicated to enable the future of e-Mobility by providing the most open, secure and robust charging network everywhere, a charging platform based on the cloud server makes it simple and convenient to meet the diverse demands of charger operators, charging users and e-Mobility service providers. We provide everything you need to offer a complete EV charging solution.

- **Management System:** A central system for charger operators to manage charge points and monitor charging service. Status monitor, charge record, prices management, firmware upgrade, remote diagnose, and load balance are offered in one capable system.
- **Mobile App:** A charging App for EV drivers who needs charging service. Prices, locations, availability, start/stop charging, and auto billing are available in an easy way.
- **Interoperability:** Connections with e-Mobility Service Providers who have EV drivers as customers are viable through the open charge point interface protocol (OCPI).

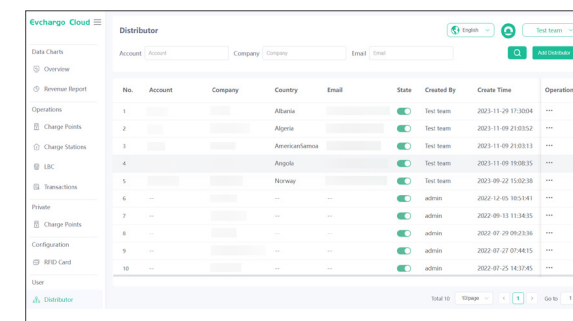
Management System

The management system is designed for operators to manage the charge points and the charging service to all users. The future of charging is smart, and our management system is equipped with future-proof features. The system works on the cloud, which enables us to update new features rapidly.



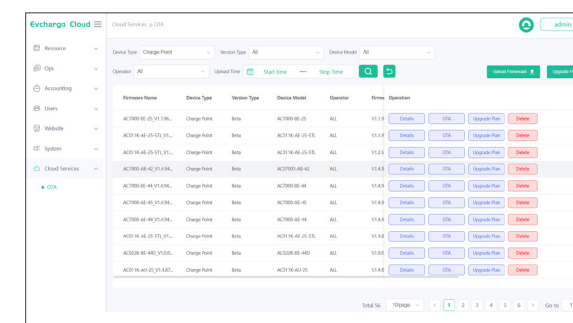
Fee Pricing Strategy

- Use third-party payment platforms such as Stripe, PayPal, Nets for fund transactions.
- Set different fee rates for different types of users to meet different needs.



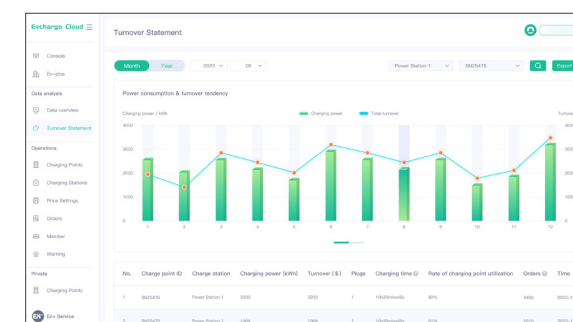
Distributor Cloud Platform Management

- Customers can grow their network by developing sub and creating merchant accounts.
- Distributor accounts are emailed to allow access to our platform, with data automatically synchronised with parent accounts.



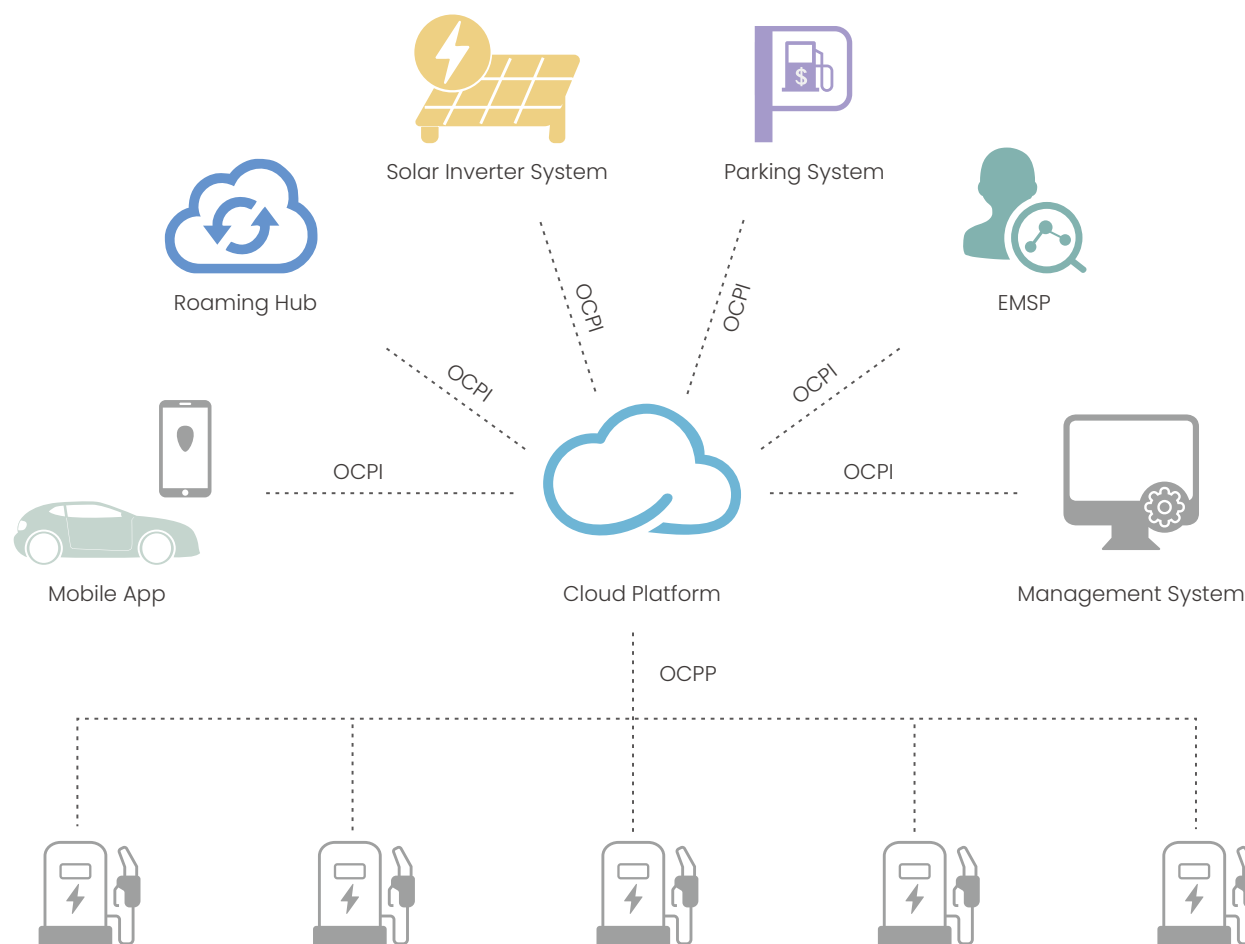
Smart O&M

- Real-time back-end monitoring of site and station data.
- Technical staff can view and analyse logs through the back-end system and resolve equipment issues via remote OTA upgrades.



Operational Data Analysis

- Customers can examine daily/monthly charge volume and revenue data by time dimension.
- Statistical data analysis at station/site level, with export support for reference purposes.



Mobile App

The charging App connects EV drivers with charging stations, so that they can easily find a charger and enjoy the charging service. It enables users to do location search, charging monitor and payment settlement. All is done in a mobile phone.

PV Green Energy

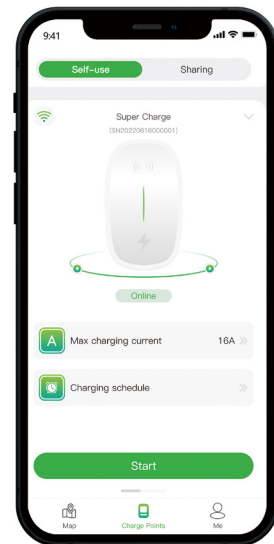
0 cost for green mode solar charging
Effective mixed mode charge with both solar and grid energy

Smart Charging

Wi-Fi | Bluetooth | Plug & Play

Scheduled Charging

Set periodic scheduled charging



Account Sign up

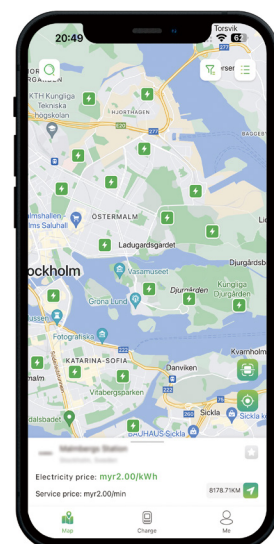
Easy sign up with a mobile phone number

Location Search

Quick search for available charging facilities

Charging Operation

Friendly interface and convenient operation



Load balancing

Support for adjusting EV charger output

Device Authorisation

Support for authorising use by friends and family

Charging Data

Facilitates maintenance and adjustment of the charge station layout.

Real Time Monitor

Real time presentation of charging consumption

Cashless Payment

Mobile payment from credit card, like Nets, PayWay Stripe

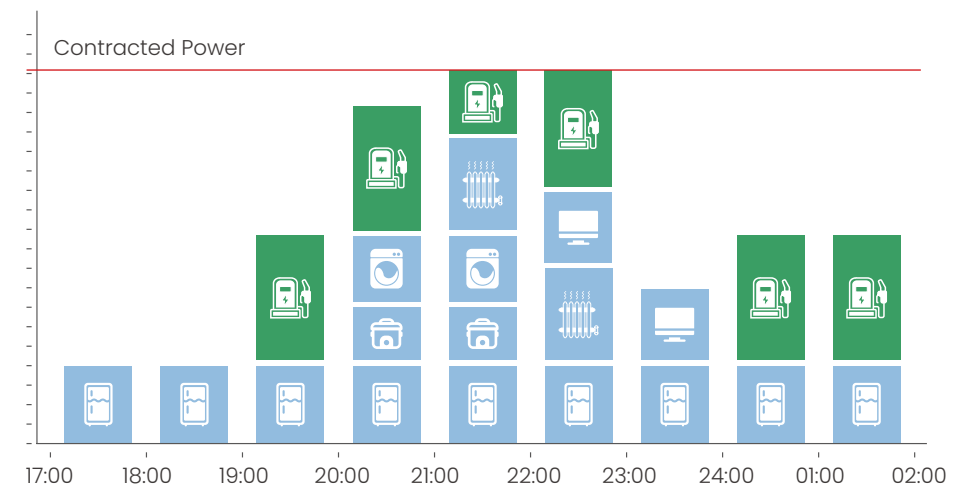
Auto Billing

Secure billing through registered account

Load Balancing Solution

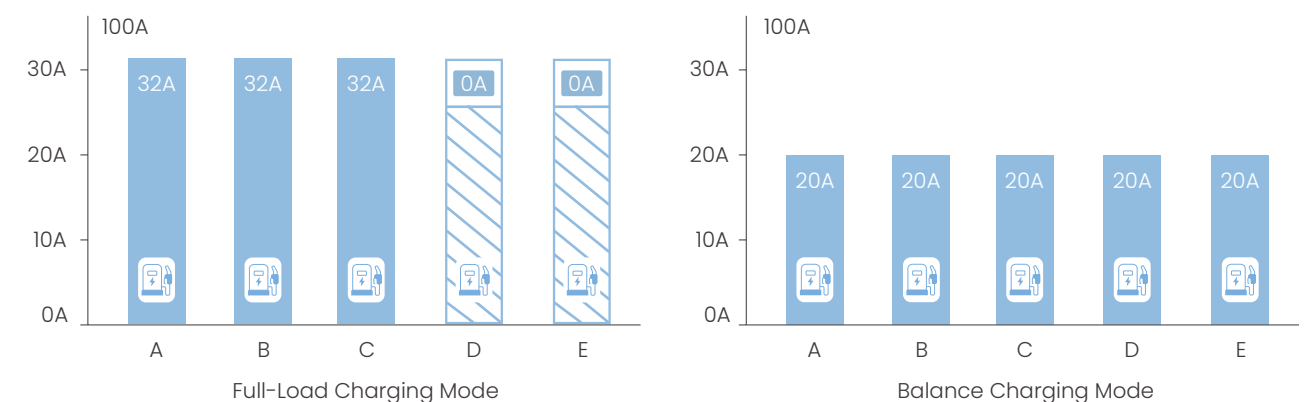
Single Charger Load Balancing Solution

When the power consumption exceeds the limit, the charger's current is restricted to protect house load.



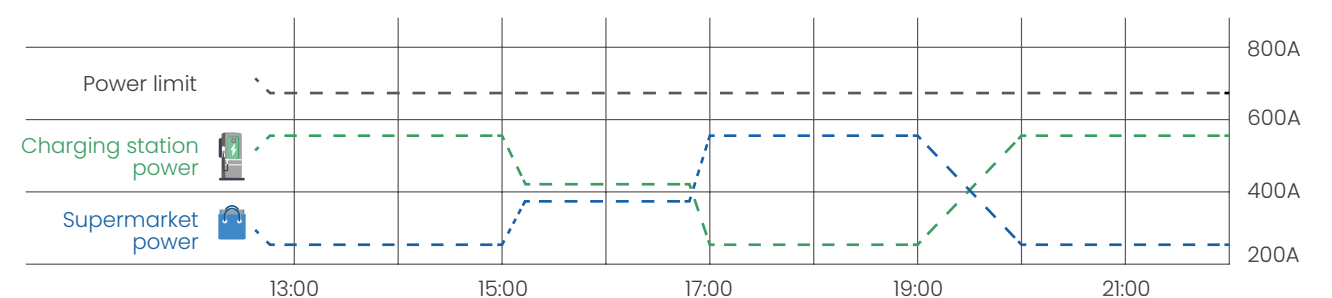
Multi-Charger Load Balancing Solution

1. Full-Load Charging Mode: first come first charge, responding to different users' need.
2. Balance Charging Mode: evenly distribute power to all chargers, relieving anxieties with



Intersite Load Balancing Solution

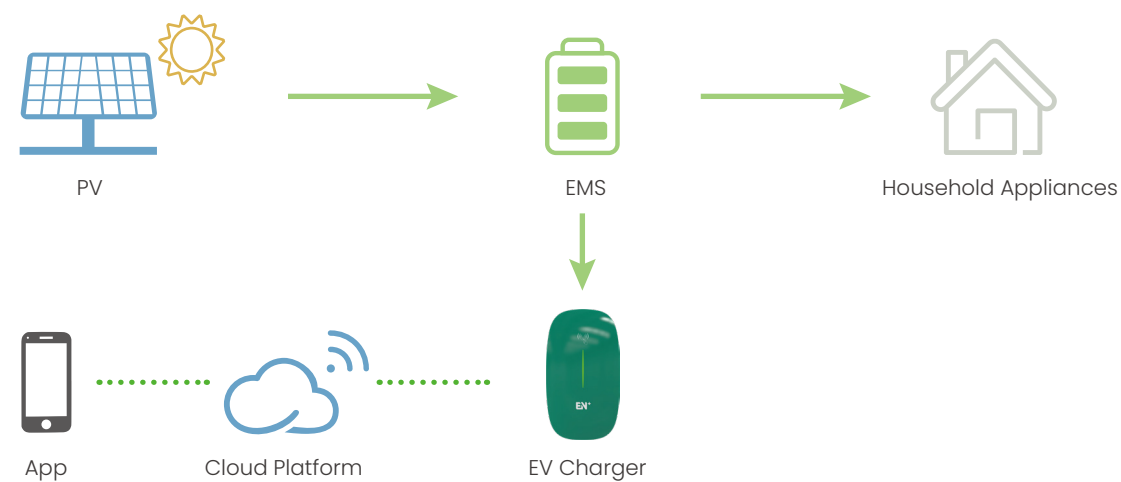
When there are large supermarkets or high power consuming communities around the station, the station dynamically obtains electricity consumption information from the grid and adjusts its maximum power. This solution create an electricity-friendly community by protecting the grid.



PV Load Balancing Solution

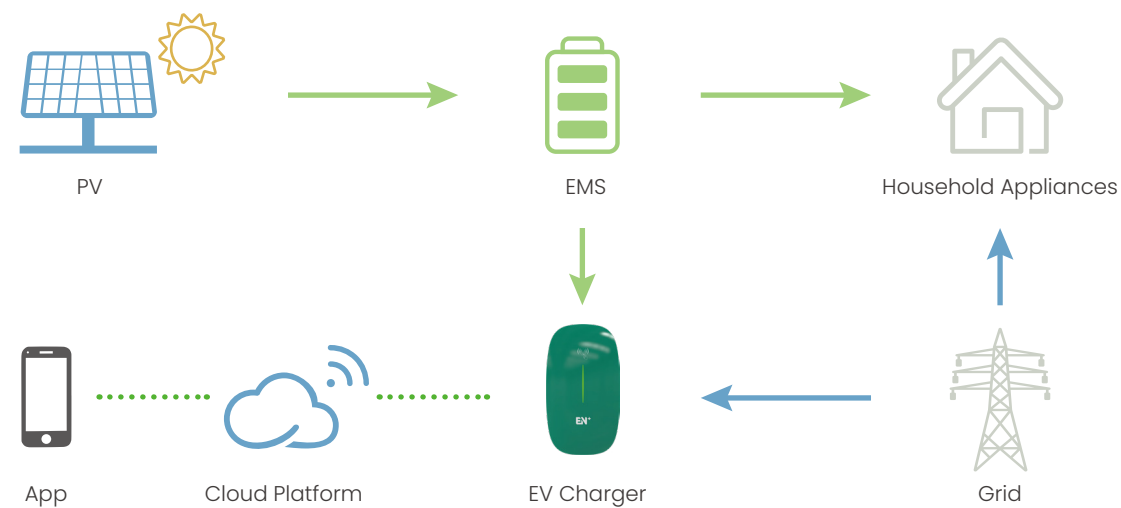
Green Mode

After PV generated power is supplied to other household appliances, there is still surplus electricity that can start the charge points (>6A).



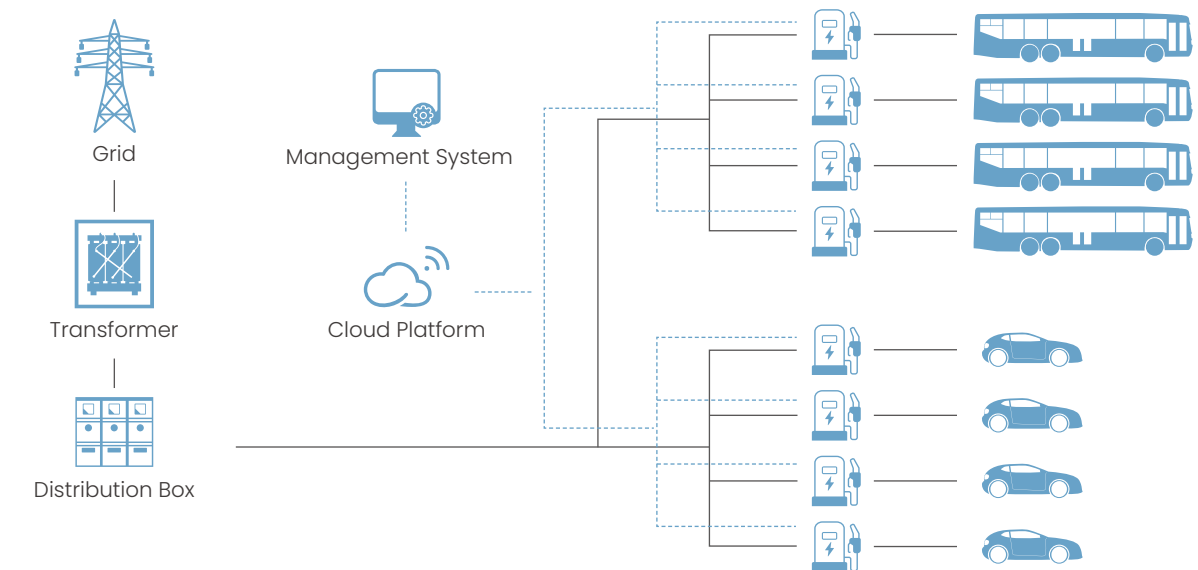
Mix Mode

After PV generated power is supplied to other household appliances, the surplus energy is insufficient to start a charge point (0-6A). The charge point charges according to user's settings to use up all the surplus electricity, and the power grid makes up the insufficient electricity.



Charging Solution

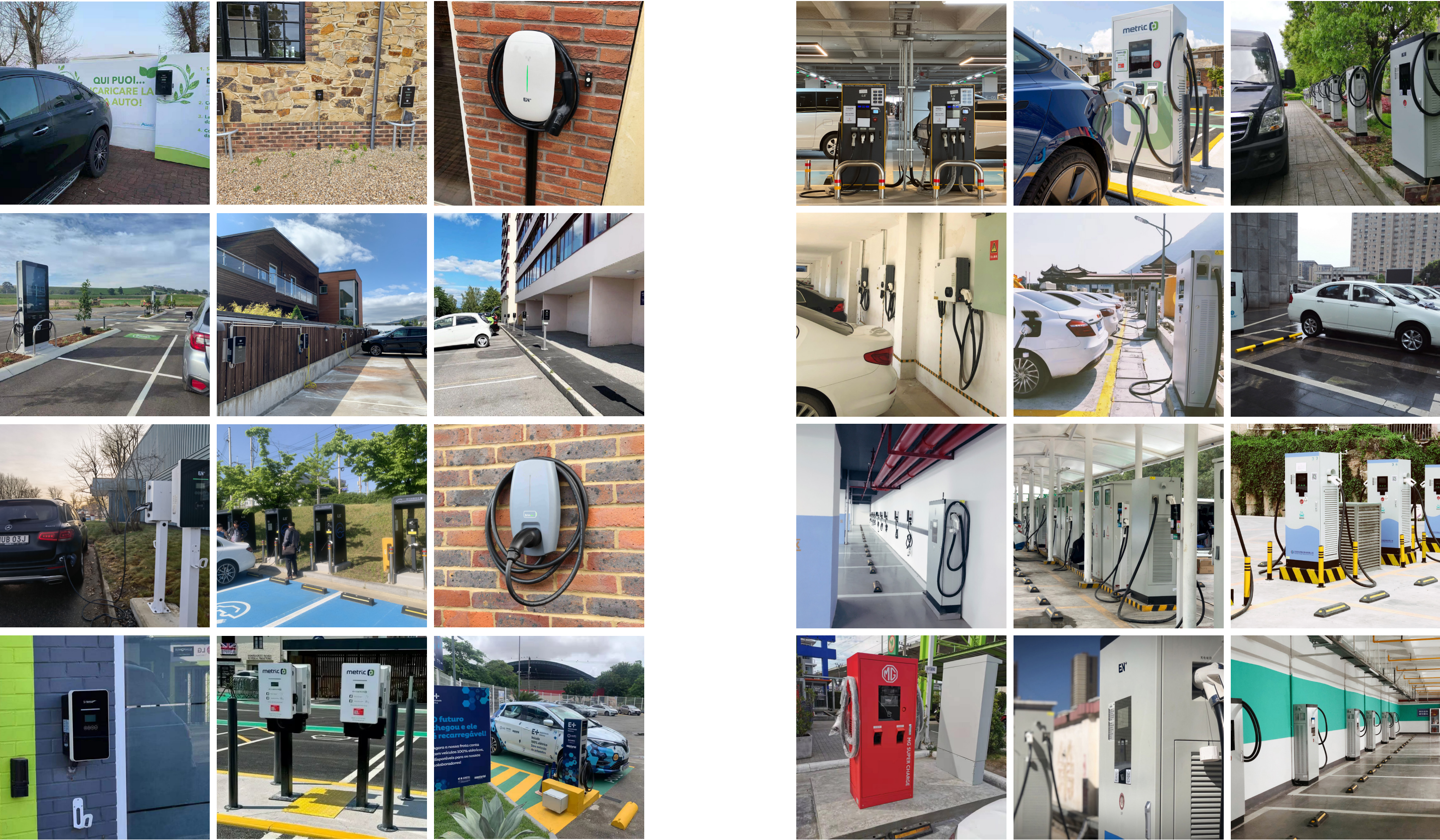
We provide everything that's needed to build a charging business, from charging facilities to customer services and smart energy management solutions. You can either manage your own network of charging stations or provide the service for other charger operators. All solutions are whitelabelled and can be customized to meet your customers' needs.



At home, at work, or on the go, we have the electric vehicle charging solution for you. Our solution is suitable for multiple scenarios. We help you to connect with your customers. EN+ offers all you need for running a robust charging business.

Smart Charging Parking Lots Residential Parking Lot	Charging Stations in Shopping Malls and Tourist Attractions Commercial Parking Lot	Home and Private EV Charger Shared Charging Private Home Garage	Battery Swapping Stations for EV Charging Energy Utilities/Storage	Remote Charging for Logistics and Private Vehicles Mobile Charging
Centralized Charging Stations for Buses Bus Charging Station	OEM Support for Vehicle Manufacturers Automobile Service Shop	Centralized Charging Stations for Rental Services Taxi Charging Station	Centralized Charging Stations for Public Use Super charging station	Charging Stations at Highway Service Areas Super charging station

Project Cases



EN⁺ Shenzhen EN Plus Tech Co., Ltd.

Address: Floor 2, Building 6, No. 1026 Songbai Road, Nanshan District, Shenzhen, China.

Postal Code: 518055

Sales Representative: sales@en-plus.com.cn

After-sales Support: support@en-plus.com.cn

Website: www.en-plustech.com

Version: 2024 Rev. 07.22

