



# PRODUCTS MANUAL

**Shenzhen EN Plus Tech Co., Ltd.**

Global Supplier for EV Charging Facilities  
and Software Platform



# C CONTENTS

Company Introduction	01
Certification	02
Why Choose Us	03
Memo Series Portable Box(EU Standard)	04-05
Bello Series Home Wallbox(EU Standard)	06-07
Alvis Series Home Wallbox(EU & UK Standard)	08-09
Caro Series Home Wallbox(EU & UK Standard)	10-11
Caro Pro Series Home Wallbox(EU & UK Standard)	12-13
Saro Series Home Wallbox(EU & UK Standard)	14-15
Vita Series Business Wallbox(EU & UK Standard)	16-17
Nano Series Duo Wallbox(EU & UK Standard)	18-19
Cubo Series AC Charger(EU Standard)	20-21
Corebox Series DC Charger(EU Standard)	22-23
Mobox Series DC Charger(EU Standard)	24-25
Turbo Series DC Charger(EU Standard)	26-27
Rocket Series DC Charger(EU Standard)	28-29
Silk Series Home Wallbox(US Standard)	30-31
Solvo Series Business Wallbox(US Standard)	32-33
Caro Series Home Wallbox(JP Standard)	34-35
Taro Series Business Wallbox(JP Standard)	36-37
Turbo Series DC Charger(JP Standard)	38-41
Power Module	42-43
Cloud Platform	44
Management System	45
Mobile App	46
Load Balancing Solution	47
Solar Charging Solution	48
Charging Solution	49
Project Cases	50-52

## Company Introduction

- Founded in 2015, total-solution supplier of EV charging station and cloud management system
- Top R&D team in China, rich experience in international protocol (OCPP 1.6J above)
- Full-range products, exported to over 50 countries and regions since 2016
- Independent capability of design, manufacture and sales, all-in-one service
- Product line covers Portable Charger, AC Charger, DC Charger, Power Module and Cloud Management System and Mobile App, all independently developed by ourselves



## Global Partners





# Certification



IATF 16949 Certification



ISO 9001 Quality Management System Certification



EN Plus Brand Trademark Registration Certification



National High-tech Enterprise Certification



Shenzhen High-tech Enterprise Certification



Management System Software Certification



Software Industry Association Member



Computer Software Copyright Registration Certification



National Patent Certification



Cape Certification



CQC Certification



CE Certification



Certification Test Report

# Why Choose Us

## Product Portfolio

- Rich Product Series & Certifications
- Versatile Software Ecosystem for Service
- Comprehensive Solutions for Scenario Applications

## Production & Delivery

- Automotive-grade Quality Standards
- Fully Integrated Intelligent Production Line
- Digital Management System

## Tech Innovation

- 100+ Independent R&D Patents
- Forward-looking Technology Research Reserves
- Efficient and Customized Services.

## Service Support

- Global Market Service Capabilities
- Comprehensive Product Service Management
- 24/7 Online Support.





Memo Series Portable Box

Memo Series Portable Box adopts a wire-winding design for space-saving and easy carrying with EVs. It employs comprehensive electrical protection plus IP67 ingress proof and UV resistance to ensure charging safety.

EU Standard



Simple Use

- Portable, easy to carry
- Wire winding design
- Plug to Charge

Legible Identification

- Clear LED light indication
- Charging status identification
- Color OLED

Robust Structure

- Corrosion proof
- IP67 ingress protection (body)

Security & Safe

- Over & residual protection on current, voltage & frequency
- Surge Protection
- Over temperature protection

Memo Series Portable Box

Datasheet	Model	AC3500-DE-20
Electrical Specification	Power Supply	1P+N+PE
	Rated Voltage	230V AC
	Rated Current	16A
	Frequency	50 / 60HZ
	Rated Power	3.5kW
Basic Attributes	Charge Connector	Type 2 Cable
	Cable Length	4m
	Enclosure	PC943
	LCD	1.3" Monochrome Screen
	LED Indicator	Blue
	Start Mode	Plug to Charge
Safety	Ingress Protection	IP67 (Body)
	Impact Protection	IK10 (w / o Screen)
	Electrical Protection	Over current protection, Residual current protection Surge protection, Over / Under voltage protection, Over / Under frequency protection, Over temperature protection
	Certification Standard	IEC 62752-2018 IEC61851-21-2:2021
	Warranty	2 Years
Working Environment	Operation Temperature	-30°C-+50°C
	Work Humidity	5%-95%
	Work Altitude	≤2000m
Package	Product Dimension	212*92*55mm (H*W*D)
	Package Dimension	300*130*270mm (L*W*H)
	Net Weight	2kg
	Gross Weight	3kg
	External Package	Handbag / Carton





Bello Series Home Wallbox

Bello Series designs to provide a stable and versatile charging environment for household use. The 7kW RFID active single-phase AC charger ensures 32A output current as a maximum. Its high compatibility allows charging for all Type 2 EV models.

EU Standard



Small Footprint Design

- A5 paper size equipment
- 4m wiring cables

Simple Operation

- Start / Stop charging by RFID card
- Simple HMI with LED indicators

Flexible Option

- Type 2 charging cable
- 16A / 32A adjustable output current
- RFID authentication, optional with Plug to Charge
- Wall-mounted / floor-stand installation

Secure & Safe

- Over temperature protection
- Over & Residual current detection

Bello Series Home Wallbox

Datasheet	Model	AC7000-AE-05
Electrical Specification	Power Supply	1P+N+PE
	Rated Voltage	230V AC
	Rated Current	32A
	Frequency	50 / 60HZ
	Rated Power	7kW
Basic Attributes	Charge Connector	Type 2 Cable
	Cable Length	4m
	Enclosure	PC943
Interactive Interface	LED Indicator	Green / Yellow / Red
	RFID Reader	Mifare ISO / IEC 14443A
	Start Mode	Plug to Charge / RFID
Safety	Ingress Protection	IP65
	Impact Protection	IK08
	Electrical Protection	Over current protection, Residual current protection Surge protection, Over / Under voltage protection, Over / Under frequency protection, Over temperature protection
	Certification Standard	EN IEC 61851-1:2019 IEC 61851-1:2017 IEC61851-21-2:2021
	Warranty	2 Years
Working Environment	Operation Temperature	-30°C~+50°C
	Work Humidity	5%-95%
	Work Altitude	≤2000m
Package	Product Dimension	233*150*70mm (H*W*D)
	Package Dimension	380*285*175mm (L*W*H)
	Net Weight	3kg
	Gross Weight	4kg
	External Package	Carton



# Alvis Series Home Wallbox

The stylish Alvis Series Home Wallbox is perfect for Type 2 EV models. With network connectivity and OCPP 1.6 compatibility, it offers load balancing feature. Ideal for residential use, it combines style and functionality. It is certified with ETSI EN 303 645, ensuring network security for consumer IoT devices.

EU & UK Standard



### Intelligent

- Connectivity: Wi-Fi+4G / Wi-Fi+Ethernet
- Smart mobile App control
- Scheduled charging
- OCPP 1.6 Json
- Dynamic load balancing

### Flexible

- Type 2 cable
- Wall-mount / Pole-mount installation
- App operation / RFID authentication / Plug to Charge

### Secure & Safe

- 30mA Type A + 6mA DC
- Relay-sticking protection



UK  
CA EN 303 645 (UK Standard Only)

# Alvis Series Home Wallbox

Datasheet	Model	AC7000-AE-45	AC7000-AB-45	AC011K-AE-25
Electrical Specification	Power Supply	1P+N+PE		3P+N+PE
	Rated Voltage	230V AC		400V AC
	Rated Current	32A		16A
	Frequency	50/60Hz		
	Rated Power	7kW		11kW
Basic Attributes	Product Standard	EU	UK	EU
	Charge Connector	Type 2 Cable		
	Cable Length	7m Cable		
	Enclosure	PC943		
	Installation	Wall-mount / Pole-mount (Optional)		
Interactive Interface	LED Indicator	Green / Yellow / Red		
	RFID Reader	Mifare ISO / IEC 14443 A		
	Start Mode	Plug to Charge / RFID Card / App		
Communication	Wi-Fi & Ethernet	Standard		Wi-Fi
	Wi-Fi & 4G	Optional		/
	Bluetooth	Hardware Ready		/
	OCPP	OCPP 1.6 Json		
Safety	RCD	30mA Type A+6mA DC		
	Ingress Protection	IP65		
	Impact Protection	IK08		
	Electrical Protection	Over current protection, Residual current protection Surge protection, Over / Under voltage protection, Over / Under frequency protection, Over temperature protection		
	Certification	CE / CB / RoHS	UKCA / EN 303645	CE / CB / RoHS
	Certification Standard	IEC 61851-1:2017 EN IEC 61851-1:2019 EN IEC 61851-21-2:2021 EN IEC 61000-6-1:2019 EN IEC 61000-6-3:2007+A1 EN 300 328 V2.2.2:2019 EN 300 330 V2.1.1:2017 EN 301 489-1 V2.2.3:2019 EN 301 489-3 V2.1.1:2019 EN 301 489-17 V3.2.0:2017 EN 62311:2020 BS 7671:2018+A2:2022		
	Warranty	2 Years		
Working Environment	Operation Temperature	-30℃ ~+50℃		
	Work Humidity	5%-95%		
	Work Altitude	≤2000m		
Package	Product Dimension	328*181*87mm (H*W*D)		
	Package Dimension	420*280*190mm (L*W*H)		
	Net Weight	3kg		
	Gross Weight	4kg		
	External Package	Carton		





# Caro Series Home Wallbox

Caro Series Home Wallbox, a 2023 Red Dot Award winner, adds elegance to any charging location, be it at home, in business settings, or semi-public areas. Solar power-compatible for eco-friendly charging, its intelligent load management system reduces grid peak pressures. Experience powerful load balancing with up to 20 chargers on a single circuit. Enjoy the flexibility of 1A grid charging, optimizing energy usage with seamless PV integration.

EU & UK Standard



## Versatile

- Type 2 cable / socket
- Wall-mount / Pole-mount installation
- Three enclosure colors
- Activated by NFC

## Intelligent

- Communications: Wi-Fi+4G+Bluetooth / Wi-Fi+Ethernet+Bluetooth
- App charging scheduling
- Dynamic load balancing with LBC

## PV Compatible

- 0 emission PV charging
- Seamless integration with PV systems
- Adjustable current for optimized PV usage

## Safe & Convenient

- 30mA Type A + 6mA DC
- Relay-sticking protection



Pearl White



Space Black



Emerald Green



UK CA EN 303 645 (UK Standard Only)

# Caro Series Home Wallbox

Datasheet	Model	AC7000-AE-35 AC7000-AB-45C	AC7000-BE-35	ACO11K-AE-35	ACO11K-BE-35
Electrical Specification	Power Supply	1P+N+PE		3P+N+PE	
	Rated Voltage	230V AC		400V AC	
	Rated Current	32A		16A	
	Frequency	50/60Hz			
	Rated Power	7kW		11kW	
Basic Attributes	Product Standard	AE: EU / AB: UK	EU	EU	EU
	Charge Connector	Type 2 Cable	Type 2 Socket	Type 2 Cable	Type 2 Socket
	Cable Length	7m Cable	/	7m Cable	/
	Enclosure	PC943			
	Installation	Wall-mount / Pole-mount (Optional)			
Interactive Interface	LED Indicator	Green / Yellow / Red			
	RFID Reader	Mifare ISO / IEC 14443 A			
	Start Mode	Plug to Charge / RFID Card / App			
Communication	Wi-Fi & Bluetooth & Ethernet	Standard			
	Wi-Fi & Bluetooth & 4G	Optional			
	OCPP	OCPP 1.6 Json			
Safety	RCD	30mA Type A + 6mA DC			
	Ingress Protection	IP65	IP54	IP65	IP54
	Impact Protection	IK08			
	Electrical Protection	Over current protection, Residual current protection Surge protection, Over / Under voltage protection, Over / Under frequency protection, Over temperature protection			
	Certification	AE: CE / CB / RoHS AB: UKCA / EN 303645	CE / CB / RoHS		
	Certification Standard	IEC 61851-1:2017 EN IEC 61851-1:2019 EN IEC 61851-21-2:2021 EN IEC 61000-6-1:2019 EN IEC 61000-6-3:2007+A1 EN 300 328 V2.2.2:2019 EN 300 330 V2.1.1:2017 EN 301 489-1 V2.2.3:2019 EN 301 489-3 V2.1.1:2019 EN 301 489-17 V3.2.0:2017 EN 62311:2020 BS 7671:2018+A2:2022			
	Warranty	2 Years			
Working Environment	Operation Temperature	-30℃ ~+50℃			
	Work Humidity	5%-95%			
	Work Altitude	≤2000m			
Package	Product Dimension	344*192*100mm (H*W*D) Cable 344*192*135mm (H*W*D) Socket			
	Package Dimension	430*330*235mm (L*W*H) Cable 430*245*210mm (L*W*H) Socket			
	Net Weight	4kg	2kg	4kg	2kg
	Gross Weight	5kg	3kg	6kg	3kg
	External Package	Carton			



# Caro Pro Series Home Wallbox

Caro Pro Series Home Wallbox embodies simplicity and environmental responsibility. Not only does this wallbox support PV charging, it also incorporates dynamic load balancing to relieve the grid during peak hours. By harnessing solar power for eco-friendly charging, it helps reduce electricity costs and meets your green objectives. Its intelligent load management ensures optimised energy use through seamless PV integration.

EU & UK Standard



### Versatile

- Customizable enclosure choice
- Activated by RFID
- Convenient back plate for easy cable access

### Intelligent

- Multi communications
- App charging scheduling
- Dynamic load balancing

### PV Compatible

- 0 emission PV charging
- Seamless integration with PV systems
- Adjustable current for optimized PV usage

### Safe & Convenient

- 30mA Type A + 6mA DC
- Relay-sticking protection
- Ergonomic and user-friendly enclosure design



EN 303 645 (UK Standard Only)

# Caro Pro Series Home Wallbox

Datasheet	Model	AC022K-AB-45C2	AC022K-AE-45C2
Electrical Specification	Power Supply	3P+N+PE	
	Rated Voltage	400V AC	
	Rated Current	32A	
	Frequency	50 / 60 HZ	
	Rated Power	22kW	
Basic Attributes	Product Standard	UK	EU
	Charge Connector	Type 2 Cable	
	Cable Length	7m	
	Enclosure	PC943	
	Installation	Wall-mount / Pole-mount (Optional)	
Interactive Interface	LED Indicator	Green / Yellow / Red	
	RFID Reader	Mifare ISO / IEC14443A	
	Start Mode	Plug to Charge / RFID card / App	
Communication	Wi-Fi & Ethernet & Bluetooth & 4G	Standard	
	OCPP	OCPP 1.6 Json	
Safety	RCD	30mA Type A + 6mA DC	
	Ingress Protection	IP65	
	Impact Protection	IK10	
	Electrical Protection	Over current protection, Residual current protection, Surge protection, Over / Under voltage protection, Over / Under frequency protection, Over temperature protection	
	Certification	CE, CB, RoHS, Reach, EN 303645	
	Certification Standard	IEC 61851-1:2017 EN IEC 61851-1:2019 EN IEC 61851-21-2:2021 EN IEC 61000-6-1:2019 EN IEC 61000-6-3:2007+A1 EN 300 328 V2.2.2:2019 EN 300 330 V2.1.1:2017 EN 301 489-1 V2.2.3:2019 EN 301 489-3 V2.1.1:2019 EN 301 489-17 V3.2.0:2017 EN 62311:2020 BS 7671:2018+A2:2022	
	Warranty	2 years	
Working Environment	Noise	≤60dB	
	Operation Temperature	-30℃ ~+50℃	
	Work Humidity	5%-95%	
	Work Altitude	≤2000m	
Package	Product Dimension	374*226*164mm (H*W*D)	
	Package Dimension	430*330*235 mm (L*W*H)	
	Net Weight	4kg	
	Gross Weight	7kg	
	External Packing	Carton	





# Saro Series Home Wallbox

Saro Series Home Wallbox is designed to meet the demanding needs of homeowners. It offers a variety of connectivity options and features a compact, space-saving design. With its dynamic load management system, users can enjoy cost-effective charging solutions. It is also easy to operate and maintain via a user-friendly app or software system, ensuring maximum flexibility and convenience.

EU & UK Standard



## Versatile

- Type 2 / T2S Socket
- Customizable enclosure choice
- Activated by RFID
- Convenient back plate for easy cable access

## Intelligent

- Multi communications (Wi-Fi / 4G / Ethernet)
- App charging scheduling
- Dynamic load balancing

## PV Compatible

- 0 emission PV charging
- Seamless integration with PV systems
- Adjustable current for optimized PV usage

## Safe & Convenient

- 30mA Type A + 6mA DC
- Relay-sticking protection
- Ergonomic and user-friendly enclosure design



EN 303 645 (UK Standard Only)

# Saro Series Business Wallbox

Datasheet	Model	AC022K-BE-45S1 AC022K-BB-45S1	AC022K-AE-45S1 AC022K-AB-45S1	AC022K-TE-45S1
Electrical Specification	Power Supply	3P+N+PE		
	Rated Voltage	400V AC		
	Rated Current	32A		
	Frequency	50 / 60 HZ		
	Rated Power	22KW		
Basic Attributes	Product Standard	BE: EU / BB: UK	AE: EU / AB: UK	FR
	Charge Connector	Type 2 Socket	Type 2 Cable	T2S Socket
	Cable Length	/	7m	/
	Enclosure	PC		
	Installation	Wall-mount / Pole-mount (Optional)		
Interactive Interface	LED Indicator	Green / Yellow / Red		
	RFID Reader	Mifare ISO / IEC14443A		
	Start Mode	Plug to Charge / RFID card / App		
Communication	Wi-Fi & Ethernet & Bluetooth & 4G	Standard		
	OCPP	OCPP 1.6 Json		
Safety	RCD	30mA Type A + 6mA DC		
	Ingress Protection	IP54	IP65	IP54
	Impact Protection	IK10		
	Electrical Protection	Over current protection, Residual current protection, Surge protection, Over / Under voltage protection, Over / Under frequency protection, Over temperature protection		
	Certification	CE, CB, RoHS, Reach, EN 303645		
	Certification Standard	IEC 61851-1:2017 EN IEC 61851-1:2019 EN IEC 61851-21-2:2021 EN IEC 61000-6-1:2019 EN IEC 61000-6-3:2007+A1 EN 300 328 V2.2.2:2019 EN 300 330 V2.1.1:2017 EN 301 489-1 V2.2.3:2019 EN 301 489-3 V2.1.1:2019 EN 301 489-17 V3.2.0:2017 EN 62311:2020 BS 7671:2018+A2:2022		
	Warranty	2 years		
Working Environment	Operation Temperature	-30°C ~+50°C		
	Work Humidity	5%~95%		
	Work Altitude	≤2000m		
Package	Product Dimension	374x226x174 mm (H*W*D)	374x226x164 mm (H*W*D)	374x226x174 mm (H*W*D)
	Package Dimension	430*330*235 mm (L*W*H)		
	Net Weight	2.6kg	3.5kg	2.6kg
	Gross Weight	3.5 kg	7.0kg	3.5 kg
	External Packing	Carton		



# Vita Series Business Wallbox

Vita Series Business Wallbox prioritizes safety and efficiency, complying with UK's EVSCP & EU standards. It seamlessly integrates into any setup. Effortlessly manage your charging through the cloud platform and remote maintenance. The sleek design ensures easy installation, while Wi-Fi & Ethernet connectivity enables convenient control via the mobile app. Rest assured, the MID certified energy meter guarantees the utmost accuracy in your charging experience.

## EU & UK Standard



## Simple

- Temper glass front panel
- Robust enclosure
- Easy installation
- Vinyl branding options available

## Flexible

- Type 2 cable / Type 2 socket
- Wall-mount / Pole-mount installation
- App operation / RFID authentication / Plug to Charge

## Intelligent

- Communications:  
Wi-Fi+4G / Wi-Fi+Ethernet
- Smart mobile App control
- 2.7" monochrome screen display
- OCPP 1.6 Json

## Secure & Safe

- 30mA Type A + 6mA DC
- Independent RCBO
- MID certified energy meter with accurate measurement



UK  
CA EN 303 645 (UK Standard Only)

# Vita Series Business Wallbox

Datasheet	Model	AC7000-AE-44	AC7000-BE-44 AC7000-BB-44	AC022K-AE-44	AC022K-BE-44 AC022K-BB-44
Electrical Specification	Power Supply	1P+N+PE		3P+N+PE	
	Rated Voltage	230V AC		400V AC	
	Rated Current	32A		32A	
	Frequency	50/60Hz			
	Rated Power	7kW		22kW	
Basic Attributes	Product Standard	EU	BE: EU / BB: UK	EU	BE: EU / BB: UK
	Charge Connector	Type 2 Cable	Type 2 Socket	Type 2 Cable	Type 2 Socket
	Cable Length	7m	/	7m	/
	Enclosure	PC943+Temper Glass		Galvanized Steel+Temper Glass	
	Installation	Wall-mount / Pole-mount (Optional)			
Interactive Interface	LED Indicator	Green / Yellow / Red			
	LCD Display	2.7" Monochrome Screen			
	RFID Reader	Mifare ISO / IEC 14443 A			
	Start Mode	Plug to Charge / RFID Card / App			
Communication	Wi-Fi & Ethernet	Standard			
	Wi-Fi & 4G	Standard			
	Bluetooth	Hardware Ready			
	OCPP	OCPP 1.6 Json			
Safety	RCD	30mA Type A + 6mA DC			
	RCBO	Type A			
	Energy Meter	MID Certified			
	Ingress Protection	IP65	IP54	IP65	IP54
	Impact Protection	IK08			
	Electrical Protection	Over current protection, Residual current protection Surge protection, Over / Under voltage protection, Over / Under frequency protection, Over temperature protection			
	Certification	CE / CB / Pen Fault / UKCA			
	Certification Standard	IEC 61851-1:2017 EN IEC 61851-1:2019 EN IEC 61851-21-2:2021 EN IEC 61000-6-1:2019 EN IEC61000-6-2 / -4: 2019 EN IEC 61000-6-3:2007+A1 EN 300 328 V2.2.2:2019 EN 300 330 V2.1.1:2017 EN 301 489-1 V2.2.3:2019 EN 301 489-3 V2.1.1:2019 EN 301 489-17 V3.2.0:2017 EN 62311:2020 BS 7671:2018+A2:2022			
	Warranty	2 Years			
	Working Environment	Operation Temperature	-30℃ ~+50℃		
Work Humidity		5%-95%			
Work Altitude		≤2000m			
Package	Product Dimension	356*211*136mm (H*W*D)		452*295*148mm (H*W*D)	
	Package Dimension	490*340*210mm (L*W*H)		570*390*220mm (L*W*H)	
	Net Weight	6kg Cable	3kg Socket	14kg	10kg
	Gross Weight	7kg Cable	4kg Socket	16kg	12kg
	External Package	Carton			





# Nano Series Duo Wallbox

The Nano Series is a new generation of 2X22kW AC chargers, available in both commercial and home versions, suitable for use in residential communities, commercial properties, and private settings. It supports remote parameter viewing and control, Ad Hoc, and card activation. It has 8 built-in safety protection functions to ensure user safety. It can be equipped with a wireless router that supports full network access or be wire connected to the network. Smart solutions such as load balancing is also available to save costs and facilitate management.

EU & UK Standard



## Innovative

- Type 2 socket / cable, 2x11kW / 1x22kW / 2x22kW simultaneously
- Suitable for home & semi-public use
- Easy to install by plugging back plate
- Installation cost saving

## Intelligent

- Communications:  
Wi-Fi+4G+Bluetooth+Ethernet
- OCPP 1.6 Json
- Dynamic load balancing with LBC

## Flexible

- Compatible with all EV & PHEV models
- App operation / RFID authentication / Plug to Charge
- Optional socket and cable version
- Option to select MID meter or opt out

## Secure & Safe

- 30mA Type A + 6mA DC
- Independent RCBO
- MID certified energy meter with accurate measurement
- IK10



# Nano Series Duo Wallbox

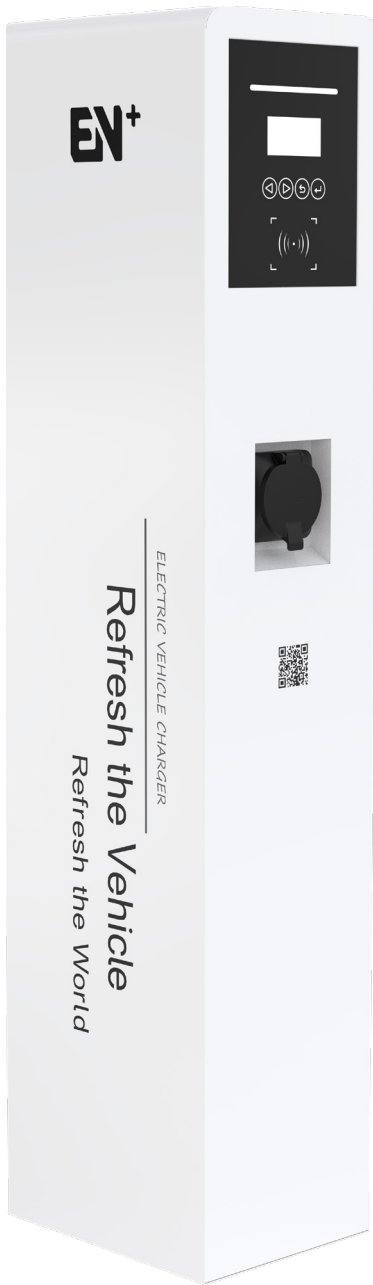
Datasheet	Model	AC022K-BE-44D	AC022K-AE-44D	AC044K-BE-44D	AC044K-AE-44D
Electrical Specification	Power Supply	3P+N+PE			
	Rated Voltage	400V AC±20%			
	Rated Current	32A		2x32A	
	Frequency	50 / 60Hz			
	Rated Power	2*11KW / 1*22KW		2*22KW	
	Power Measurement Accuracy	1% with MID			
Classic Attributes	Charge Connector	Type 2 Socket	Type 2 Cable	Type 2 Socket	Type 2 Cable
	Cable Length	/	7m	/	7m
	Enclosure	PC943			
	Installation	Wall-mount / Pole-mount (Optional)			
Interactive Interface	LED Indicator	Green / Yellow / Red			
	Screen	/			
	RFID Reader	Mifare ISO / IEC14443A			
	Start Mode	Plug to Charge / RFID card / App			
Communication	Wi-Fi & Ethernet & Bluetooth	Standard			
	4G	Standard			
	OCPP	OCPP 1.6 Json			
Safety	RCD	30mA Type A + 6mA DC			
	RCBO	Type A			
	Ingress Protection	IP54			
	Impact Protection	IK10			
	Electrical Protection	Over current protection, Residual current protection, Surge protection, Over / Under voltage protection, Over / Under frequency protection, Over temperature protection			
	Certification	CE / CB / RoHS / Reach			
	Certification Standard	IEC 61851-1:2017 EN IEC 61851-1:2019 EN IEC 61851-21-2:2021 ENIEC 61000-6-1:2019 EN IEC 61000-6-3:2007+A1 EN 300 328 V2.2.2:2019 EN 300 330 V2.1.1:2017 EN 301 489-1 V2.2.3:2019 EN IEC61000-6-2 / -4:2019 EN 301 489-3 V2.1.1:2019 EN 301 489-17 V3.2.0:2017 EN 62311:2020 BS 7671:2018+A2:2022			
	Warranty	2 Years			
	Working Environment	Operation Temperature	-30℃ --+50℃		
Work Humidity		5%-95%			
Work Altitude		≤2000m			
Package	Product Dimension	540*360*199mm (H*W*D)	540*360*199mm (H*W*D)	540*360*199mm (H*W*D)	540*360*199mm (H*W*D)
	Package Dimension	620*466*245mm (L*W*H)	635*430*345mm (L*W*H)	620*466*245mm (L*W*H)	635*430*345mm (L*W*H)
	Net Weight	10kg	20kg	10kg	20kg
	Gross Weight	12kg	21kg	12kg	21kg
	External Packing	Carton			



# Cubo Series AC Charger

Cubo Series AC Charger offers simultaneous dual charging. With high-output capability and flexible modes, it achieves extensive compatibility. Its sleek design is customizable, allowing for personalized branding. Advanced safety features ensure secure charging in any environment.

EU Standard



## Minimalistic

- Compact, slimline enclosure
- Built-in socket holder
- Easy installation

## Flexible

- Type 2 cable
- Floor-stand installation
- App operation / RFID authentication / Plug to Charge

## Intelligent

- Communications:  
Wi-Fi+4G+Bluetooth / Wi-Fi+Ethernet+Bluetooth
- Smart mobile App control
- Scheduled charging– for low tariffs
- OCPP 1.6 Json
- Dynamic load balancing

## Secure & Safe

- 30mA Type A + 6mA DC
- Independent RCBO
- MID certified energy meter with accurate measurement



# Cubo Series AC Charger

Datasheet	Model	AC044K-BE-34
Electrical Specification	Power Supply	3P+N+PE
	Rated Voltage	400V AC
	Rated Current	2X32A
	Frequency	50 / 60Hz
	Rated Power	2x22kW
Basic Attributes	Charge Connector	2xType 2 Socket (2xType 2 Cable Optional)
	Enclosure	Galvanized Steel+Temper Glass
	Installation	Floor Stand
Interactive Interface	LED Indicator	Green / Yellow / Red
	LCD Display	2.7" Monochrome Screen
	RFID Reader	Mifare ISO / IEC 14443A
	Start Mode	Plug to Charge / RFID Card/App
Communication	Wi-Fi & Bluetooth & Ethernet	Yes
	Wi-Fi & Bluetooth & 4G	Yes
	OCPP	OCPP 1.6 Json
Safety	RCD	30mA Type A + 6mA DC
	RCBO	Type A
	Energy Meter	MID Certified
	Ingress Protection	IP54
	Impact Protection	IK08
	Electrical Protection	Over current protection, Residual current protection, Short circuit protection, Surge protection, Over / Under voltage protection, Over / Under frequency protection, Over temperature protection
	Certification	CE / CB
	Certification Standard	EN IEC 61851-1:2019 IEC61851-1:2017 IEC61851-21-2:2021
	Warranty	2 Years
Working Environment	Operation Temperature	-30℃ - +50℃
	Work Humidity	5%-95%
	Work Altitude	≤2000m
Package	Product Dimension	1200*290*230mm (H*W*D)
	Package Dimension	1318*434*357mm (L*W*H)
	Net Weight	28kg
	Gross Weight	45kg
	External Package	Wood Case

Corebox Series DC Charger

Corebox Series DC Charger is designed for efficiency and convenience, it delivers high-speed charging to keep you on the move. With its intelligent features, it offers seamless integration with smart grids, load balancing, and remote monitoring capabilities. The sleek and compact design fits perfectly into any environment, while the user-friendly interface provides a hassle-free experience. Equipped with advanced safety features and compatibility with various EV models, this DC charger is the perfect solution for both commercial and public charging stations.

EU Standard



Innovative

- Anti-theft lock with special unlock tool
- App control & operation
- Faster charging with smaller installation space

Intelligent

- OCPP 1.6 Json

Flexible

- Wall-mount / Pole-mount (Optional)
- Start modes: RFID / App

Secure and Safe

- Modular design, easy to repair and replace
- Emergency stop switch, improving the safety



Corebox Series DC Charger

Datasheet	Model	DC030K
Electrical Specification	Power Supply	3P+N+PE
	Input Voltage	400V ±10% AC
	Input Current	48A
	Input Frequency	50 / 60HZ
	Output Voltage	200-1000V DC
	Maximum Current	80A
	Maximum Output Power	30kW
Basic Attributes	Charge Connector	CCS2
	Cable Length	5m
	Enclosure	Galvanized Steel
	Installation	Wall-mount / Pole-mount (Optional)
Interactive Interface	LED Indicator	Green / Yellow / Red
	LCD Display	4.3' Color Touch Display
	RFID Reader	Support
	Start Mode	App / QR / RFID Card
Communication	Wi-Fi & Ethernet	Yes
	4G	Optional
	OCPP	OCPP 1.6 Json
Electrical Parameter	Efficiency	Max 95.5%
	Power Factor	≥0.99@50%~100%
Loading	THD	≤5%@100% Loading
	Ripple Factor	≤±1%
Safety	RCD	Optional
	Emergency Stop	Yes
	Ingress Protection	IP54
	Impact Protection	IK10 (w / o screen)
	Electrical Protection	Over current protection, Residual current protection, Short circuit protection, Surge protection, Over / Under voltage protection, Over / Under frequency protection, Over / Under temperature protection
	Certification	CE / CB
	Certification Standard	EN IEC 61851-1 : 2019, EN 61851-23 : 2014, EN 61851-24:2014 EMC : EN 301489-1 V 2.2.3 : 2019 EN 301489-3 V 2.1.1 : 2019 EN 301489-17 V 3.2.0 : 2017 EN IEC 61000-6-2 : 2019 EN IEC 61000-6-4 : 2019 EN IEC 61851-21-2 : 2021 EN IEC 62311 : 2020
Working Environment	Warranty	2 Years
	Cooling Method	Fan Cooling
	Noise	≤65dB@22°C
	Operation Temperature	-30°C ~+50°C
	Work Humidity	5%~95%
	Work Altitude	<2000m
Package	Product Dimension	706*570*209mm (W*D*H)
	Package Dimension	846*772*412mm (W*D*H)
	Net Weight	35kg
	Gross Weight	40kg
	External Package	Carton





# Mobox Series DC Charger

Mobox Series DC Charger features an integrated portable design characterised by compact size and lightweight construction. This design allows for quick power connection, easy mobility and convenient vehicle transport.

EU Standard



## Innovative

- Anti-theft screw
- App control & operation
- Faster charging with smaller installation space

## Intelligent

- 10" touch display
- OCPP 1.6 Json

## Flexible

- Wall-mount / Pole-mount (Optional)
- Start Mode: App / QR code / RFID Card / POS (Optional)

## Secure and Safe

- Modular design, easy to repair and replace
- IP54 high ingress protection level
- MID Meter (Optional)



# Mobox Series DC Charger

Datasheet	Model	DC030K	DC040K
Electrical Specification	Power Supply	3P+N+PE	3P+N+PE
	Input Voltage	400V AC ±10%	
	Input Current	47A	63A
	Input Frequency	50 / 60HZ	
	Output Voltage	200-1000V DC	
	Maximum Output Current	100A	133.3A
	Maximum Output Power	30kW	40kW
Basic Attributes	Charge Connector	CSS2	
	Number of Cable	1	
	Cable Length	5m	
	Enclosure	Galvanized Steel	
	Installation	Wall-mount / Pole-mount (Optional)	
Interactive Interface	LED Indicator	Green / Yellow / Red	
	LCD Display	10" Color Touch Display	
	RFID Reader	Mifare ISO / IEC 14443 A&B	
	Start Mode	App / QR code / RFID Card / POS (Optional)	
Communication	Wi-Fi & Ethernet	Standard	
	4G	Yes	
	OCPP	OCPP 1.6 Json	
Electrical Parameter	Efficiency	Max 95.5%	
	Power Factor	≥0.99@50%-100% Loading	
	THD	≤5%@100% Loading	
	Ripple Factor	≤±1%	
Safety	RCD	Type A	
	Emergency Stop	Yes	
	Ingress Protection	IP54	
	Impact Protection	IK10 (w / o Screen)	
	Electrical Protection	Over current protection, Residual current protection, Short circuit protection, Surge protection, Over / Under voltage protection, Over / Under frequency protection, Over / Under temperature protection	
	Certification	CE / CB	
	Certification Standard	EN IEC 61851-1:2019 IEC 61851-1:2017 IEC 61851-21-2:2021 EN 61851-23:2014 EN 61851-24:2014	
	Warranty	2 Years	
Working Environment	Cooling Method	Fan Cooling	
	Noise	≤65dB@22°C	
	Operation Temperature	-30°C ~+50°C	
	Work Humidity	5%-95%	
	Work Altitude	<2000m	
Package	Product Dimension	550*300*850mm (W*D*H)	
	Package Dimension	650*960*400mm (L*W*H)	
	Net Weight	79kg	
	Gross Weight	110kg	
	External Package	Wood Case	



# Turbo Series DC Charger

Turbo Series DC Charger, delivering lightning-fast charging speeds ranging from 60-120kW. Designed for high-powered performance, it keeps electric vehicles on the road in no time. Seamlessly integrating with smart grids, it optimizes energy usage and enables remote monitoring and control. The sleek and robust design ensures durability and easy installation in any environment. Equipped with advanced safety features and compatibility with various electric vehicle models, this smart DC charger offers fast, efficient, and future-proof charging.

EU Standard



## Efficient

- One charger with multiple outputs, simultaneously charging
- Output up to 120kW
- Support full power output for 300A cable

## Flexible

- App operation / RFID authentication
- CCS2 as standard, CHAdeMO, CCS1 and GB / T support is customizable
- Flexible allocation of 30kW granularity
- Optional with POS machine & cable management
- Multi-language support

## Intelligent

- Ethernet / 4G / Wi-Fi communication all supported
- OCPP 1.6 Json
- Intelligent operation by App and cashless payment

## Secure & Safe

- Full level of electrical protection
- IK10 (w / o screen) impact protection
- MID Meter (Optional )



# Turbo Series DC Charger

Datasheet	Model	DC060K Pro	DC120K Pro
Electrical Specification	Power Supply	3P+N+PE	
	Rated Voltage	3Φ4W 400V AC ±10%	
	Rated Current	96A	190A
	Frequency	50 / 60Hz	
	Output Voltage	200-1000V DC	
	Maximum Output Current	300A	
	Rated Power	60kW	120kW (75kW for CHAdeMO)
Basic Attributes	Charge Connector	CCS2+CCS2 (200A)	CCS2 300A+CCS2 300A CCS2 300A+CHAdeMO 125A CCS2 300A+GBT 250A CCS1 300A+GBT 250A GBT 250A+GBT 250A
	Cable Length	5m	
	Enclosure	Galvanized Steel	
	Installation	Floor Stand	
Interactive Interface	Cable Management	Optional	
	LED indicator	Green / Yellow / Red	
	LCD Display	10.1" Color Touch Display	
	RFID Reader	Mifare ISO / IEC 14443A&B	
Communication	Start Mode	App / QR code / RFID Card / POS (Optional)	
	Ethernet	Yes	
	4G	Yes	
	OCPP	OCPP 1.6 Json	
Electrical Parameter	Efficiency	Max 95.5%	
	Power Factor	≥0.99@50%-100%Loading	
	THD	≤5%@100%Loading	
	Ripple Factor	≤±1%	
Safety	RCD	Type A	
	Emergency Stop	Yes	
	Ingress Protection	IP54	
	Impact Protection	IK10 (w / o Screen)	
	Electrical Protection	Over current protection, Residual current protection, Short circuit protection, Surge protection, Over / Under voltage protection, Over / Under frequency protection, Over / Under temperature protection	
	Certification	CE / CB	
	Certification Standard	EN IEC 61851-1:2019 IEC 61851-1:2017 IEC 61851-21-2:2021 EN 61851-23:2014 EN 61851-24:2014	
	Warranty	2 Years	
Working Environment	Cooling Method	Fan Cooling	
	Noise	≤65dB@22°C	
	Operation Temperature	-30° C ~+50° C	
	Work Humidity	5%-95%	
Package	Work Altitude	<2000m	
	Product Dimension	750*525*1820mm (W*D*H) Cable Management: 1060*804*222mm (W*D*H)	
	Package Dimension	1030*620*2100mm (L*W*H) Cable Management: 1320*480*390mm (L*W*H)	
	Net Weight	320kg	
	Gross Weight	364kg	
	External Package	Wood Case	

Rocket Series DC Charger

The Rocket Series DC Charger uses a 30kW/40kW constant power module to reduce charging time with high current output. It smartly allocates power to meet different vehicle charging needs for safe and fast charging. With IP54 protection, it adapts to all weather conditions and has multiple protection functions for user safety. Maintenance is easy with support for remote OTA upgrades and operation/maintenance platforms.

EU Standard



Efficient

- CCS2 as standard, CCS1, CHAdeMO and GB / T support is customizable
- Two connectors up to 300kW in total
- Wide voltage range: 200-1000V DC

Flexible

- App / RFID / QR Code
- POS terminal with contactless card payment

Intelligent

- Multiple communication: Ethernet / 4G / Wi-Fi
- OCPP 1.6 Json with CMS
- E-payment through App / POS

Secure & Safe

- Ingression protection: IP54
- MID Meter (Optional)



Rocket Series DC Charger

Datasheet	Model	DC300K	DC240K	DC180K
Electrical Specification	Power Supply	3P+N+PE		
	Input Voltage	400V AC ±10%		
	Input Current	471A	377A	283A
	Input Frequency	50 / 60Hz		
	Output Voltage	200-1000V DC		
	Maximum Current	350A		
	Rated Power	300kW	240kW	180kW
Basic Attributes	Charge Connector	CCS2+CCS2		
	Cable Length	5m		
	Enclosure	Galvanized Steel		
	Installation	Floor Stand		
Interactive Interface	LED indicator	Green / Yellow / Red		
	LCD Display	10.1" Color (Touch Display)		
	Start Mode	App / QR / RFID Card / POS (Optional)		
	Cable Management	Optional		
Communication	Wi-Fi	Yes		
	Ethernet	Yes		
	4G	Yes		
	OCPP	OCPP 1.6 Json		
Electrical Parameter	Efficiency	Max 95.5%		
	Power Factor	≥0.99@50%-100% Loading		
	THD	≤5%@100% Loading		
	Ripple Factor	≤±1%		
Safety	RCD	Type A		
	Emergency Stop	Yes		
	Ingress Protection	IP54		
	Impact Protection	IK10 (w / o Screen)		
	Electrical Protection	Over current protection, Residual current protection,Short circuit protection, Surge protection,Over / Under voltage protection, Over / Under frequency protection,Over / Under temperature protection		
	Certification	CE / CB		
	Certification Standard	EN IEC 61851-1:2019 IEC 61851-1:2017 IEC 61851-21-2:2012 EN 61851-23:2014 EN 61851-24:2014		
Working Environment	Cooling Method	Fan Cooling		
	Noise	≤65dB@22°C		
	Operation Temperature	-30°C ~+50°C		
	Work Humidity	5%~95%		
	Work Altitude	<2000m		
Package	Product Dimension	Charger: 800*750*2000mm (W*D*H) Cable Management: 1060*804*222mm (W*D*H)		
	Package Dimension	Charger: 960*908*2200mm (L*W*H) Cable Management: 1320*480*390mm (L*W*H)		
	Net Weight	481kg	445kg	438kg
	Gross Weight	525kg	489kg	489kg
	External Package	Wood Case		





# Silk Series Home Wallbox

The Silk Series Home Wallbox is a stylish and user-friendly charging solution with a SAE 1772 (Type 1) connector and smart app integration for easy installation and use. UL-certified, dustproof, and waterproof, ensures the top priority of EV charging safety. In addition, Silk Series wins Red Dot Award for its distinctive design, it also offers intelligent load management and seamless PV integration for optimized energy usage.

US Standard



## Flexible Options

- Wall-mount / pole-mount
- Hardwired / NEMA plug
- 4 enclosure colors
- Multiple charging modes

## Environmental Friendly

- Certified by Energy Star
- Eco-friendly enclosure materials

## High Reliability

- Anti-welding protection
- NEMA 4 dustproof and waterproof design
- CCID 20 leakage current protection
- UL listed and CSA certified

## Smart Operation

- Multi communications (Wi-Fi / Bluetooth / Ethernet)
- Dynamic load balancing
- PV compatible
- Scheduled charging



# Silk Series Home Wallbox

Datasheet	Model	AC010K-AU-35	AC012K-HU-35
Electrical Specification	Power Supply	L1+L2+G	
	Rated Voltage	240VAC	
	Max Current	40A	50A
	Frequency	60Hz	
	Max Power	10kW	12kW
Basic Attributes	Wiring Type	NEMA 14-50P	Hardwired
	Charge Connector	SAE 1772 (Type 1)	
	Cable Length	7m (23 feet) / 7.5m (25 feet)	
	Enclosure	PC943	
	Installation	Wall-mount / Pole-mount (Optional)	
Interactive Interface	LED Indicator	Green / Yellow / Red	
	RFID Reader	Mifare ISO / IEC 14443 A	
	Start Mode	Plug to Charge / RFID Card / App	
Communication	Wi-Fi & Bluetooth & Ethernet	Standard	
	OCPP	OCPP 1.6 Json	
Safety	Leakage Current Protection	CCID 20	
	Enclosure Rating	NEMA 4	
	Impact Protection	IK08	
	Electrical Protection	Over current protection, Residual current protection Surge protection, Over / Under voltage protection, Over temperature protection	
	Certification	UL / FCC / Energy Star	CSA / FCC / Energy Star
	Certification Standard	UL2594 UL2231-1 UL2231-2 FCC Part 15B	
	Warranty	2 Years	
Working Environment	Operation Temperature	-30°C ~+50°C (-22 °F ~122 °F )	
	Work Humidity	5%-95%	
	Work Altitude	≤2000m	
Package	Product Dimension	344*192*101mm (H*W*D)	
	Net Weight	6kg	6kg
	Gross Weight	8kg	7kg
	External Package	Carton	

Solvo Series Business Wallbox

Experience the seamless fusion of performance and style with our 80A American Standard EV charger. With a sleek and stylish exterior, it features a SAE 1772 (Type 1) plug and Tesla NACS connector for seamless connectivity via Wi-Fi, Bluetooth, Ethernet, 4G and OCPP 1.6 Json.

US Standard



Strong Performance

- SAE 1772 (Type 1) Compliant
- NEMA 4 dustproof & waterproof design
- CCID20 leak current protection
- IK08 impact protection

High Compatibility

- SAE 1772 (Type 1) connector for American market
- OCPP1.6 Json standard protocol

Smart Operation

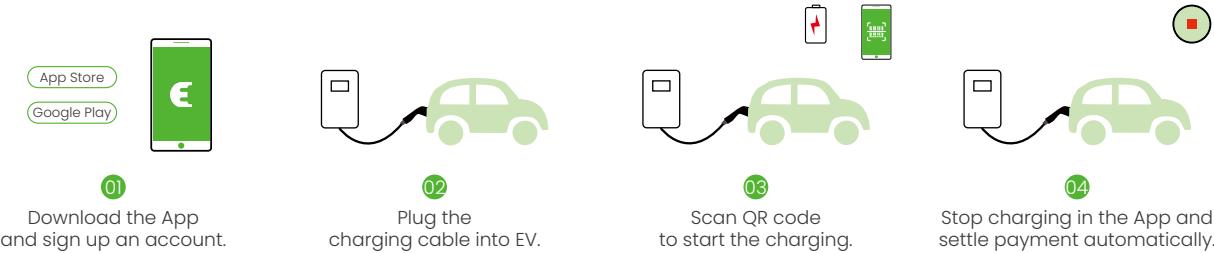
- Multi communications (Wi-Fi / Bluetooth / Ethernet / 4G)
- Dynamic load balancing
- PV compatible
- Scheduled charging

Flexible Options

- App / Plug to Charge / RFID to start
- Wall-mount / Pole-mount
- Optional with cable management pedestal

Solvo Series Business Wallbox

Datasheet	Model	AC019K-AU-52F1
Input	Power Supply	L1+L2+GND
	Rated Voltage	208V / 240V AC
	Rated Current	80A
	Adjustable output	10A-80A
	Frequency	60 HZ
	Rated Power	19.2KW
	Power Measurement Accuracy	On-board metering with ±1% accuracy at the nominal input
Output	Charge Connector	SAE 1772 (Type 1)
	Cable Length	25ft (7.5m)
	Enclosure	PC
	Installation	Wall-mount / Pole-mount (Optional)
User Interface	LCD Indicator	4.3" Color Display
	LED Indicator	Green / Yellow / Red
	RFID Reader	Mifare ISO / IEC14443A
	Start Mode	Plug to Charge / RFID card / App
Communication	Wi-Fi & Ethernet & Bluetooth& 4G	Standard
	OCPP	OCPP 1.6 Json
Safety	Leakage Current Protection	20mA CCID
	Ingress Protection	NEMA 4
	Impact Protection	IK10 (w / o Screen)
	Electrical Protection	Over current protection, Residual current protection, Surge protection, Over / Under voltage protection, Over temperature protection
	Certification	CTEP, ETL, FCC, Energy Star
	Warranty	2 years
	Operation Temperature	-30°C ~+50°C
Environment	Work Humidity	5%-95%
	Work Altitude	≤2000m
	Product Dimension	340*220*137mm (H*W*D)
Package	External Packing	Carton





# Caro Series Home Wallbox

Caro Series EV Wallbox is designed to be a simple and cost-effective solution for up to 6 kW EV charging. Because of its sleek and simple design, this single-phase AC wallbox can be used in garages, parking lots, and other private areas. Through the App, the car owner can choose the timing charging function, or modify it to PV charging mode. At the same time, it can monitor charging information, set pile parameters, bind equipment and authorization, and upgrade firmware through OTA.

JP Standard



- Pearl White
- Starry Black
- Space Gray

## Smart Charging

- Support APP
- Support cloud platform
- Ongoing development of OCPP 2.0.1.

## Easy to install & use

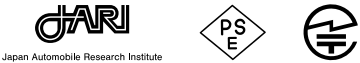
- Enclosure-free installation
- Light weight design
- Effortless operation

## Safety & Reliability

- Leakage current protection
- Over-temperature protection
- Surge protection
- Rated IK10 & IP65

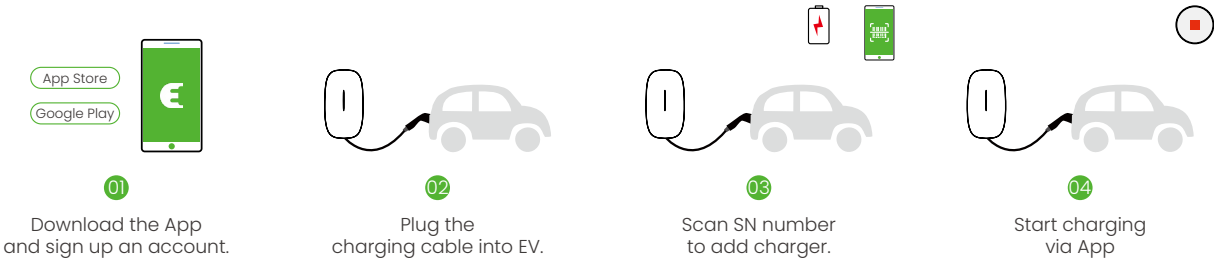
## Scalability

- Support PV charging
- Support load balance
- Ongoing development of ISO 15118



# Caro Series Home Wallbox

Datasheet	Model	AC6000-AJ-45C2
Electrical Specification	Power supply	L1+L2+PE
	Rated Voltage	200V AC
	Rated Current	30A
	Frequency	50 / 60Hz
	Rated Power	6kW
Basic Attributes	Cable Length	5m
	Charge Connector	PSE EC62196-2 ed2.0 Type1 準拠
	Measurement Accuracy	1%
	Enclosure	PC943
	Installation	Wall-mount / Pole-mount (Optional)
Interactive Interface	LED Indicator	Green / Yellow / Red
	RFID Reader	Mifare ISO / IEC 14443 A and Felica
	Start Mode	Plug to Charge / RFID Card / App
Communication	Wi-Fi & Bluetooth & Ethernet	Optional
	Wi-Fi & Bluetooth & 4G & Ethernet	Standard
	OCPP	OCPP 1.6 Json
	RS485	Optional
Safety	RCD	Type A + 6mA DC
	Ingress Protection	IP65
	Impact Protection	IK10
	Electrical Protection	Over current protection, Residual current protection Surge protection, Over / Under voltage protection, Over temperature protection
	Warranty	2 years
Working Environment	Operation Temperature	-30℃ ~+50℃
	Work Humidity	5%~95%
	Work Altitude	≤2000m
Package	Product Dimension	374*226*110mm (H*W*D)
	Package Dimension	480*325*215mm (L*W*H)
	Net Weight	4kg
	Gross Weight	7kg
	External Package	Carton





Taro Series Business Wallbox

Taro Series JP EV Charger is a stylish and efficient solution suitable for both wall and column installations. It is compact, visually appealing, and easy to install, providing seamless, independent, and cost-effective charging. It is an ideal choice for passenger vehicle owners looking to maximize the benefits of time-of-use tariffs .

JP Standard



Smart Charging

- Support App
- 4.3-inch color display
- Support cloud platform
- Ongoing development of OCPP 2.0.1.

User Friendly

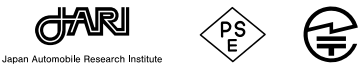
- Various payment methods (credit card / PayPay, etc.)
- Multiple startup methods
- Various communication methods (4G, Wi-Fi, Ethernet, Bluetooth)

Safety & Reliability

- Leakage current protection
- Over-temperature protection
- Surge protection
- Rated IK10 & IP65

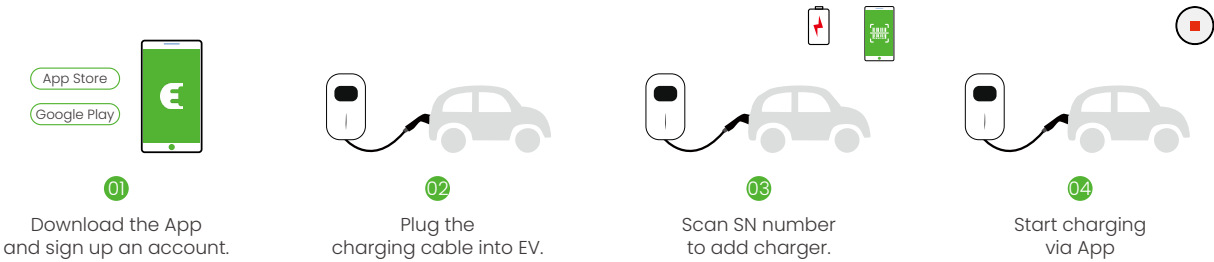
Scalability

- Support load balance
- Ongoing development of ISO 15118



Taro Series Business Wallbox

Datasheet	Model	AC6000-AJ-45C3	AC6000-AJ-42C3
Electrical Specification	Power supply	L1+L2+PE	
	Rated Voltage	200V AC	
	Rated Current	30A	
	Frequency	50 / 60Hz	
	Rated Power	6kW	
Basic Attributes	Cable Length	5m	
	Charge Connector	PSE, Type 1	
	Measurement Accuracy	1%	
	Enclosure	PC	
Interactive Interface	Installation	Wall-mount / Pole-mount (Optional)	
	LED Indicator	Green / Yellow / Red	
	LCD Display	/	4.3" LCD
	RFID Reader	Mifare ISO / IEC 14443 A and Felica	
Communication	Start Mode	Plug to Charge / RFID Card / App	
	Wi-Fi & Bluetooth & Ethernet	Optional	
	Wi-Fi & Bluetooth & 4G & Ethernet	Standard	
	OCPP	OCPP 1.6 Json	
Safety	RS485	Optional	
	RCD	Type A+6mA DC	
	Ingress Protection	IP65	
	Impact Protection	IK10	≥IK08
	Electrical Protection	Over current protection, Residual current protection Surge protection, Over / Under voltage protection, Over temperature protection	
Working Environment	Warranty	2 years	
	Operation Temperature	-30℃ ~+50℃	
	Work Humidity	5%-95%	
	Work Altitude	≤2000m	
Package	Product Dimension	378*226*109mm (H*W*D)	
	Package Dimension	480*325*215mm (L*W*H)	
	Net Weight	5kg	
	Gross Weight	8kg	
	External Package	Carton	



Turbo Series DC Charger

50kW Turbo Series complies with Japanese standards, ensuring seamless integration and unmatched reliability. Its modular design enhances maintenance efficiency, while its energy-efficient operation meets Japan's sustainability goals. With fast charging, high performance and it is perfectly suited to various EV models and fits seamlessly into Japan's dynamic EV landscape.

JP Standard



High-speed charging capability

- Delivers swift and efficient charging with 50kW output.
- Simultaneously charging, optimizing efficiency.

Customization features

- Customized for JP market with CHAdeMO Protocol 2.0.2
- Optional with cable management
- Optional POS terminal for contactless credit card payment

Flexible & durability

- High protection grade as IP54
- App operation / RFID authentication
- IK10 impact protection (w / o screen)
- Full level of electrical protection

Intelligent connectivity

- Ethernet / Wi-Fi communication all supported
- OCPP 1.6 Json
- Intelligent operation by App and cashless payment



Turbo Series DC Charger

Datasheet	Model	DC050K
Electrical Specification	Power Supply	3P+PE
	Rated Voltage	200V AC ±15%
	Rated Current	157A
	Frequency	50 / 60Hz
	Output Voltage	150-500V DC
	Maximum Current	150A
	Rated Power	50kW
Basic Attributes	Charge Connector	CHAdeMO
	Cable Length	5m
	Enclosure	Galvanized Steel
	Installation	Floor Stand
	Cable Management	Optional
Interactive Interface	LED indicator	Green / Yellow / Red
	LCD Display	10.1" Color Touch Display
	RFID Reader	Support ISO14443A / Felica
	Start Mode	App / QR code / RFID Card / POS (Optional)
Communication	Ethernet	Yes
	4G	Optional
	OCPP	OCPP 1.6 Json
Electrical Parameter	Efficiency	Max 94.5%
	Power Factor	≥0.99@50%-100% Loading
	THD	≤5%@100% Loading
	Ripple Factor	≤±1%
Safety	RCD	Type A
	Emergency Stop	Yes
	Ingress Protection	IP54
	Impact Protection	IK10 (w / o Screen)
	Electrical Protection	Over current protection, Residual current protection, Short circuit protection, Surge protection, Over / Under voltage protection, Over / Under frequency protection, Over / Under temperature protection
	Certification	CHAdeMO Protocol Rev. 2.0.2
	Certification Standard	IEC 61851-1:2017 IEC 61851-21-2:2021 IEC 61851-23:2014
	Warranty	2 Years
	Cooling Method	Fan Cooling
Working Environment	Noise	≤65dB@22°C
	Operation Temperature	-30° C ~+40° C
	Work Humidity	5%~95%
	Work Altitude	<2000m
Package	Product Dimension	750*525*1820mm (W*D*H) Cable Management: 1060*804*222mm (W*D*H)
	Package Dimension	1018*733*2082mm (L*W*H) Cable Management: 1320*480*390mm (L*W*H)
	Net Weight	289kg
	Gross Weight	333kg
	External Package	Wood Case

# Turbo Series DC Charger

120kW Turbo Series surpasses Japanese standards to ensure seamless integration and reliability. Its space-efficient design prioritises user safety. Adaptable to different EV models, it excels in Japan's evolving EV landscape. With a focus on sustainability, it offers fast charging, high performance and The additional cable management allows easy operation for people with limited strength, enhancing the convenience of the DC charger.

JP Standard



## High-speed charging capability

- Delivers swift and efficient charging with 120kW output.
- Simultaneously charging, optimizing efficiency.

## Customization features

- Customized for JP market with CHAdeMO Protocol 2.0.2
- Optional with cable management
- Optional POS terminal for contactless credit card payment

## Flexible & durability

- High protection grade as IP54
- App operation / RFID authentication
- IK10 impact protection (w / o screen)
- Full level of electrical protection

## Intelligent connectivity

- Ethernet / Wi-Fi communication all supported
- OCPP 1.6 Json
- Intelligent operation by App and cashless payment



# Turbo Series DC Charger

Datasheet	Model	DC120K
Electrical Specification	Power Supply	3P+N+PE
	Rated Voltage	400V AC ±15%
	Rated Current	188A
	Frequency	50 / 60Hz
	Output Voltage	150-500V DC
	Maximum Current	200A
	Rated Power	120kW
Basic Attributes	Charge Connector	CHAdeMO
	Cable Length	5m
	Enclosure	Galvanized Steel
	Installation	Floor Stand
	Cable Management	Optional
Interactive Interface	LED indicator	Green / Yellow / Red
	LCD Display	10.1" Color Touch Display
	RFID Reader	Support ISO14443A / Felica
	Start Mode	App / QR code / RFID Card / POS (Optional)
Communication	Ethernet	Yes
	4G	Optional
	OCPP	OCPP 1.6 Json
Electrical Parameter	Efficiency	Max 95%
	Power Factor	≥0.99@50%-100% Loading
	THD	≤5%@100% Loading
	Ripple Factor	≤±1%
	RCD	Type A
Safety	Emergency Stop	Yes
	Ingress Protection	IP54
	Impact Protection	IK10 (w / o Screen)
	Electrical Protection	Over current protection, Residual current protection,Short circuit protection, Surge protection,Over / Under voltage protection, Over / Under frequency protection,Over / Under temperature protection
	Certification	CHAdeMO Protocol Rev. 2.0.2
	Certification Standard	IEC 61851-1:2017 IEC 61851-21-2:2021 IEC 61851-23:2014
	Warranty	2 Years
	Cooling Method	Fan Cooling
	Noise	≤65dB@22°C
	Operation Temperature	-30° C ~+40° C
Working Environment	Work Humidity	5%~95%
	Work Altitude	<2000m
Package	Product Dimension	750*525*1820mm (W*D*H) Cable Management: 1060*804*222mm (W*D*H)
	Package Dimension	1018*733*2082mm (L*W*H) Cable Management: 1320*480*390mm (L*W*H)
	Net Weight	320kg
	Gross Weight	364kg
	External Package	Wood Case



Power Module

The EN Plus 30kW DC power module is a top industrial solution designed specifically for large EV chargers. It utilizes cutting-edge power electronics technology, resulting in an impressive 96.2% efficiency and just 6W standby power consumption. This translates to significant energy savings and a reduced environmental impact. The module's ultra-wide constant output voltage range guarantees compatibility with all EV models. Its unique protection design enhances reliability and extends the service life of EV chargers, while the remote OTA function reduces operating costs for users. The module has passed TÜV CE certificate and meets EMC CLASS B requirements, ensuring its quality and safety.



≤6W

Standby Power

96.2%

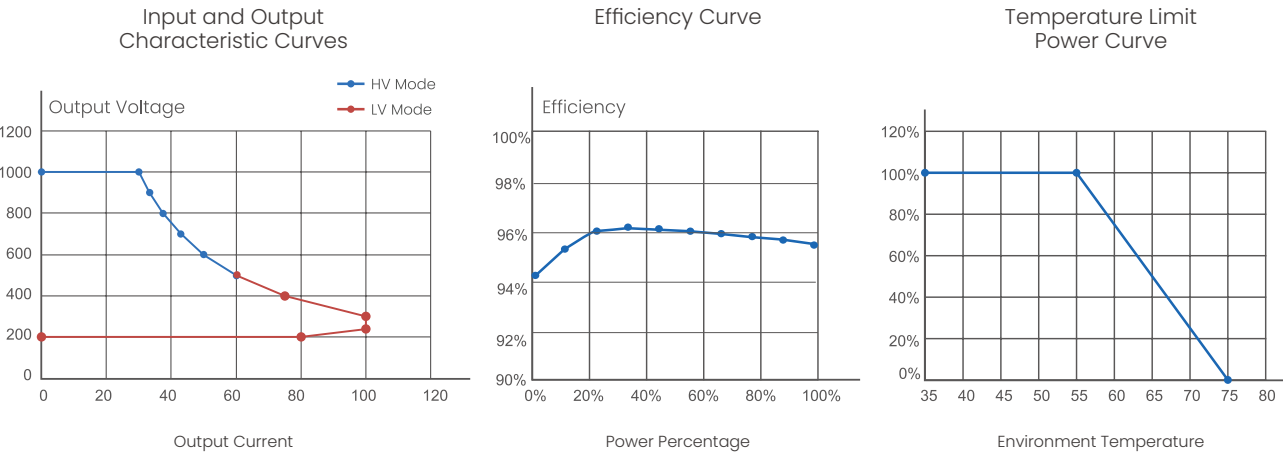
Efficiency

-40°C~+75°C

Working Temperature

200~1000VDC

Wide Output Voltage Range



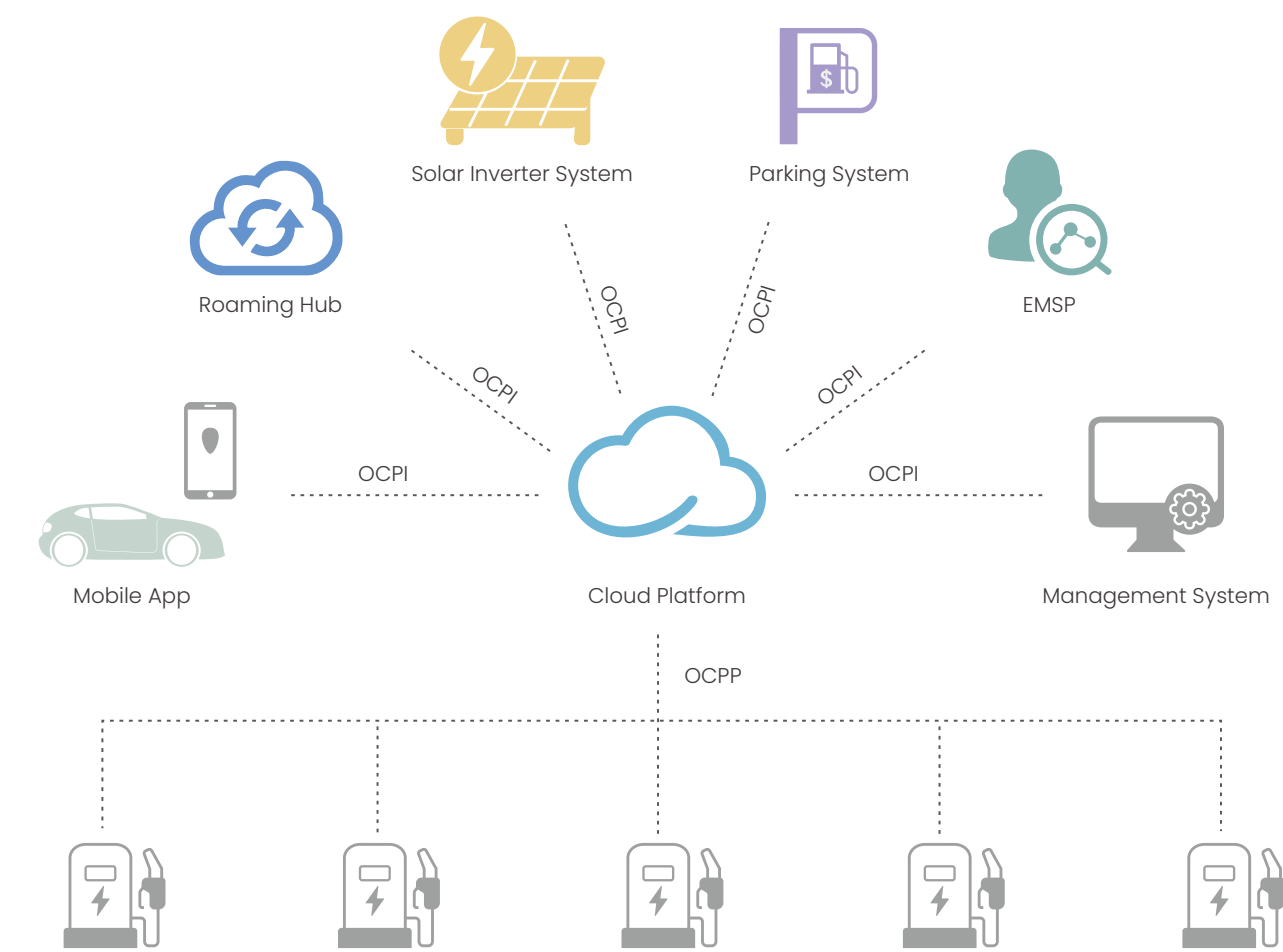
Power Module

Datasheet	Model	DCM1000100E
Input	Power Supply	3P+PE
	Rated Voltage	260~470V AC
	Max. Input Current	60A
	Frequency	50/60Hz
	Standby Power	≤6W
Output	Maximum Power	200~1000V DC
	Max. Current	100A
	Rated Power	30kW
	Constant Power	300~1000V DC
Electrical Parameter	Power Factor	≥0.99@50%-100% Loading
	THD	≤5%@100% Loading
	Efficiency	Max 96.2%
	Steady Voltage Accuracy	≤±0.5%
	Steady Current Accuracy	≤±1%
	Voltage Deviation	≤±0.5%
	Current Deviation	≤±0.15A@ Load Current<15A, ≤±1 Load Current≥15A
	Ripple Factor	Peak Factor≤1%, RMS Factor<0.5%
	Soft Start Time	≤6s
User Interface	Enclosure	Aluminized Zinc Plate (SGLCC)
	LED Indicator	Green / Yellow / Red
Communicaton	Configuration	Manual/Auto
	Protocol	CAN
Safety	Ingress Protection	IP20
	Electrical Protection	Over current protection, Residual current protection, Short circuit protection, Surge protection, Over / Under voltage protection, Over/Under frequency protection, Over / Under temperature protection
	Certification	CE / TUV Mark / CB / UKCA / RoHS
	Certification Standard	EN IEC 61851-1:2019 IEC 61851-21-2:2021 Class B EN 61851-23:2014
	Warranty	2 Years
EMC/EMI	Standard	EN IEC 61851-21-2:2021 Class B
Environment	Installation	Slots
	Cooling Method	Smart Air Cooing
	Noise	≤65dB@25°C 100% loading
	Work Temperature	-40°C ~+75°C (derate > 55°C )
	Work Humidity	5%-95%
Package	Work Altitude	<2000m
	Product Dimension	455*300*94mm (W*D*H)
	Package Dimension	564*380*72mm (L*W*H)
	Net Weight	17.0kg
	Gross Weight	18.0kg
	External Package	Carton

Cloud Platform

Dedicated to enable the future of e-Mobility by providing the most open, secure and robust charging network everywhere, a charging platform based on the cloud server makes it simple and convenient to meet the diverse demands of charger operators, charging users and e-Mobility service providers. We provide everything you need to offer a complete EV charging solution.

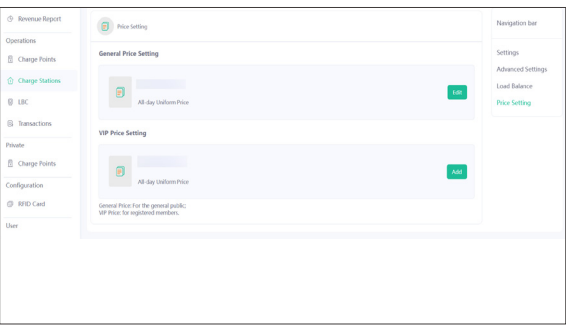
- **Management System:** A central system for charger operators to manage charge points and monitor charging service. Status monitor, charge record, prices management, firmware upgrade, remote diagnose, and load balance are offered in one capable system.
- **Mobile App:** A charging App for EV drivers who needs charging service. Prices, locations, availability, start/stop charging, and auto billing are available in an easy way.
- **Interoperability:** Connections with e-Mobility Service Providers who have EV drivers as customers are viable through the open charge point interface protocol (OCPI).



Management System

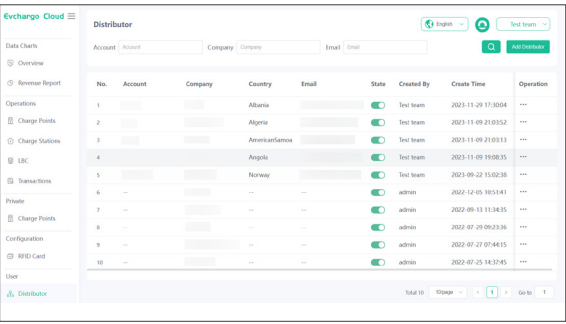


The management system is designed for operators to manage the charge points and the charging service to all users. The future of charging is smart, and our management system is equipped with future-proof features. The system works on the cloud, which enables us to update new features rapidly.



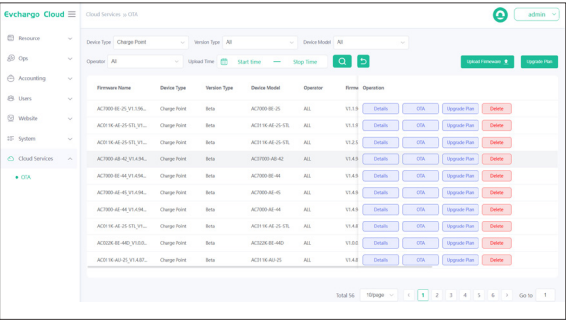
Fee Pricing Strategy

- Use third-party payment platforms such as Stripe, PayPal, Nets for fund transactions.
- Set different fee rates for different types of users to meet different needs.



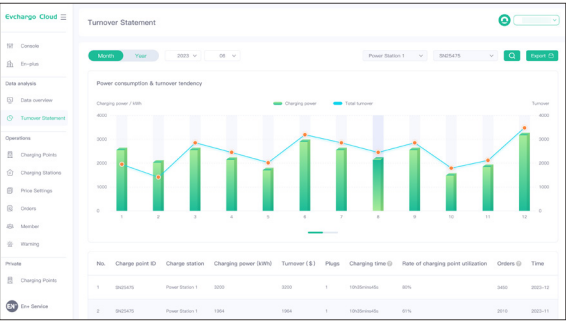
Distributor Cloud Platform Management

- Customers can grow their network by developing sub and creating merchant accounts.
- Distributor accounts are emailed to allow access to our platform, with data automatically synchronised with parent accounts.



Smart O&M

- Real-time back-end monitoring of site and station data.
- Technical staff can view and analyse logs through the back-end system and resolve equipment issues via remote OTA upgrades.



Operational Data Analysis

- Customers can examine daily/monthly charge volume and revenue data by time dimension.
- Statistical data analysis at station/site level, with export support for reference purposes.

Mobile App

The charging App connects EV drivers with charging stations, so that they can easily find a charger and enjoy the charging service. It enables users to do location search, charging monitor and payment settlement. All is done in a mobile phone.

PV Green Energy

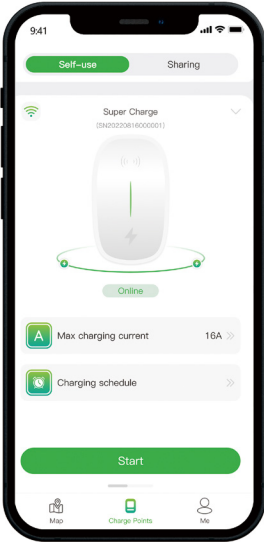
0 cost for green mode solar charging  
Effective mixed mode charge with both solar and grid energy

Smart Charging

Wi-Fi | Bluetooth | Plug & Play

Scheduled Charging

Set periodic scheduled charging



Account Sign up

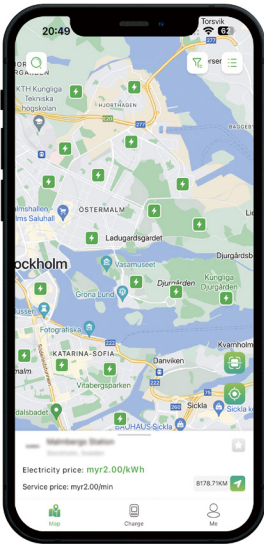
Easy sign up with a mobile phone number

Location Search

Quick search for available charging facilities

Charging Operation

Friendly interface and convenient operation



Load balancing

Support for adjusting EV charger output

Device Authorisation

Support for authorising use by friends and family

Charging Data

Facilitates maintenance and adjustment of the charge station layout.

Real Time Monitor

Real time presentation of charging consumption

Cashless Payment

Mobile payment from credit card, like Nets, PayWay Stripe

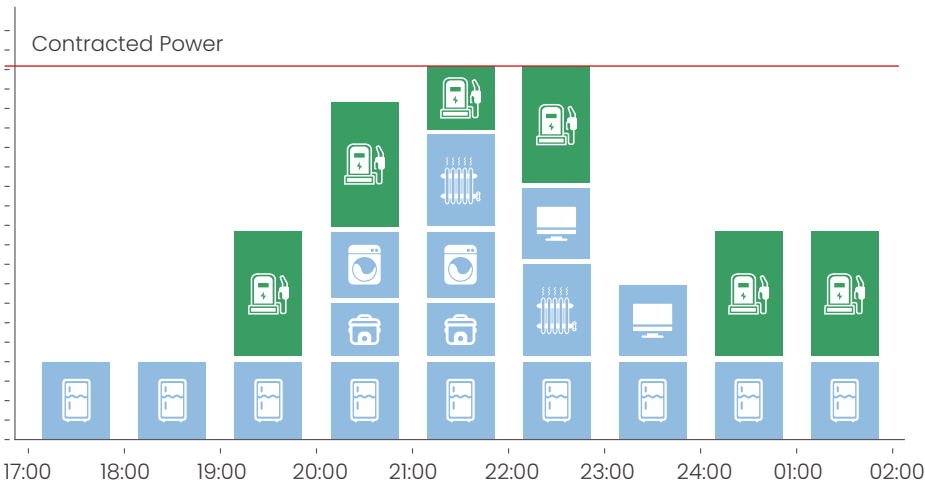
Auto Billing

Secure billing through registered account

Load Balancing Solution

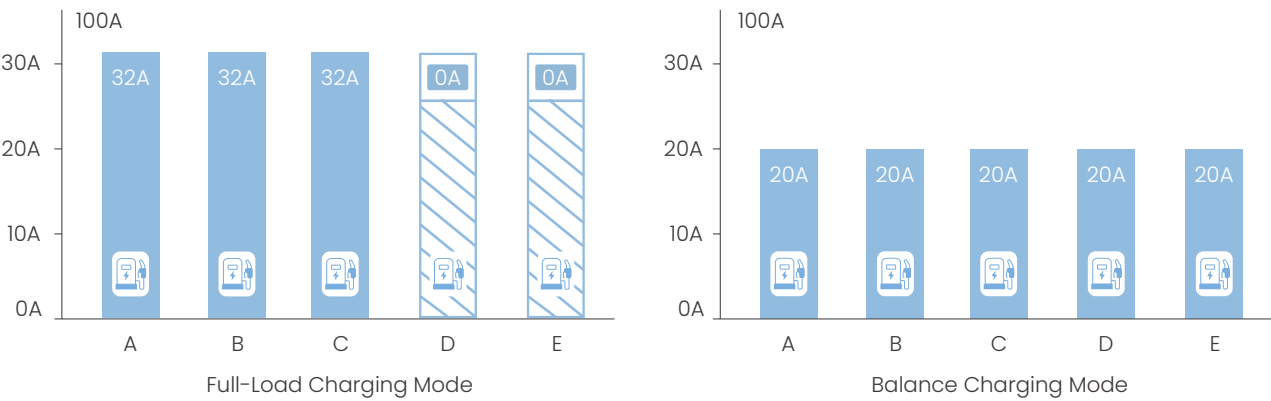
Single Charger Load Balancing Solution

When the power consumption exceeds the limit, the charger's current is restricted to protect house load.



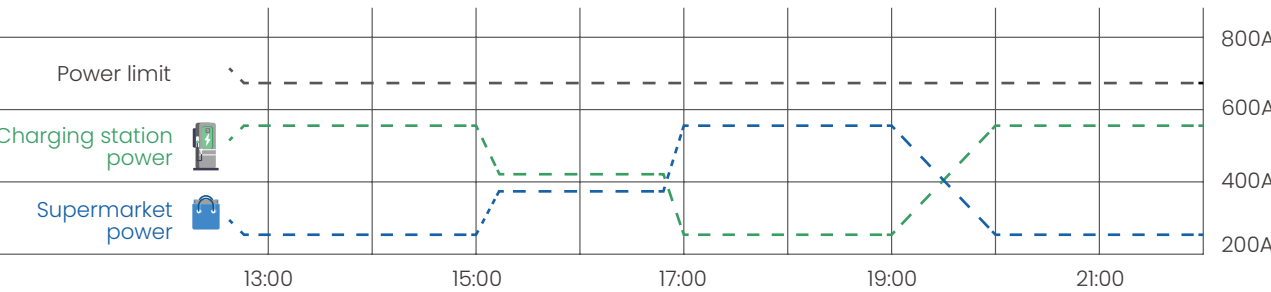
Multi-Charger Load Balancing Solution

- 1. Full-Load Charging Mode: first come first charge, responding to different users' need.
- 2. Balance Charging Mode: evenly distribute power to all chargers, relieving anxieties with



Intersite Load Balancing Solution

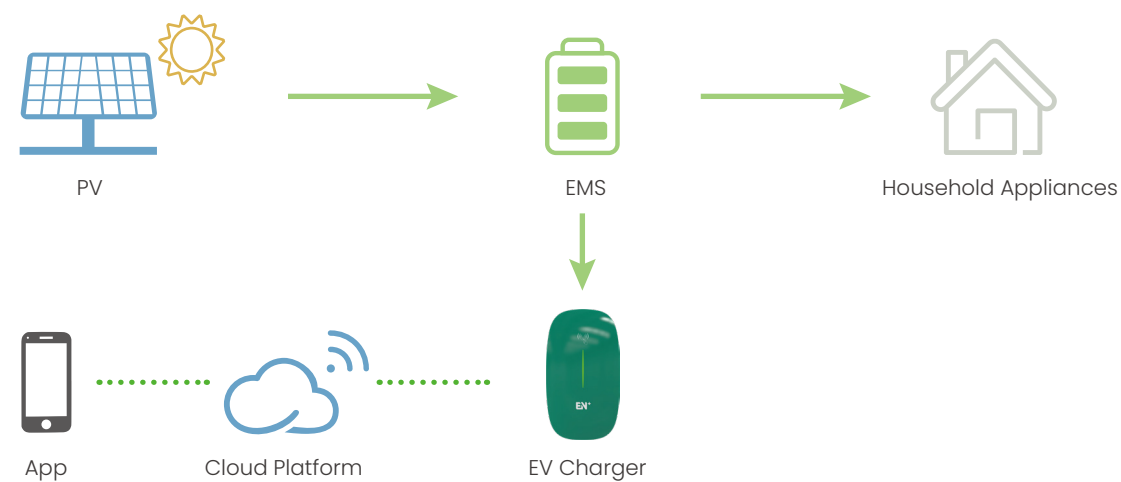
When there are large supermarkets or high power consuming communities around the station, the station dynamically obtains electricity consumption information from the grid and adjusts its maximum power. This solution create an electricity-friendly community by protecting the grid.



# Solar Charging Solution

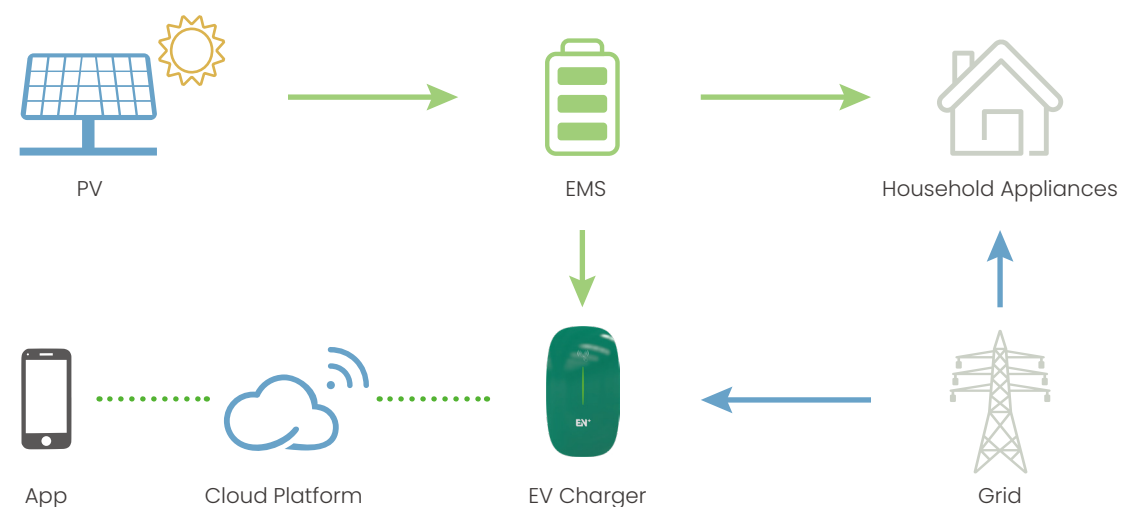
## Green Mode

After PV generated power is supplied to other household appliances, there is still surplus electricity that can start the charge points (>6A).



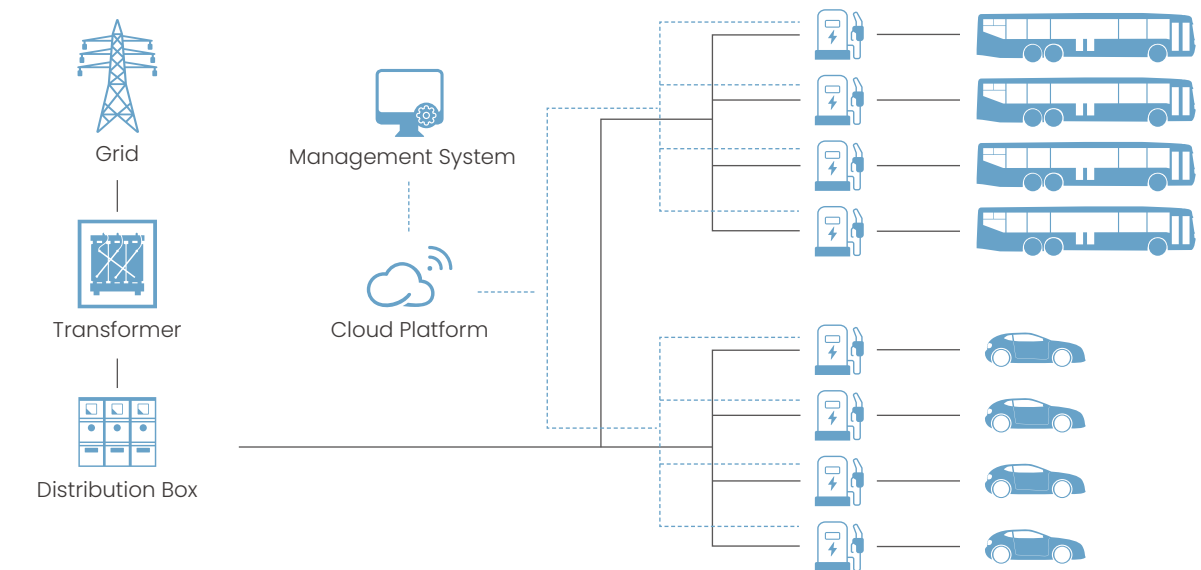
## Mix Mode

After PV generated power is supplied to other household appliances, the surplus energy is insufficient to start a charge point (0-6A). The charge point charges according to user's settings to use up all the surplus electricity, and the power grid makes up the insufficient electricity.



# Charging Solution

We provide everything that's needed to build a charging business, from charging facilities to customer services and smart energy management solutions. You can either manage your own network of charging stations or provide the service for other charger operators. All solutions are whitelabelled and can be customized to meet your customers' needs.

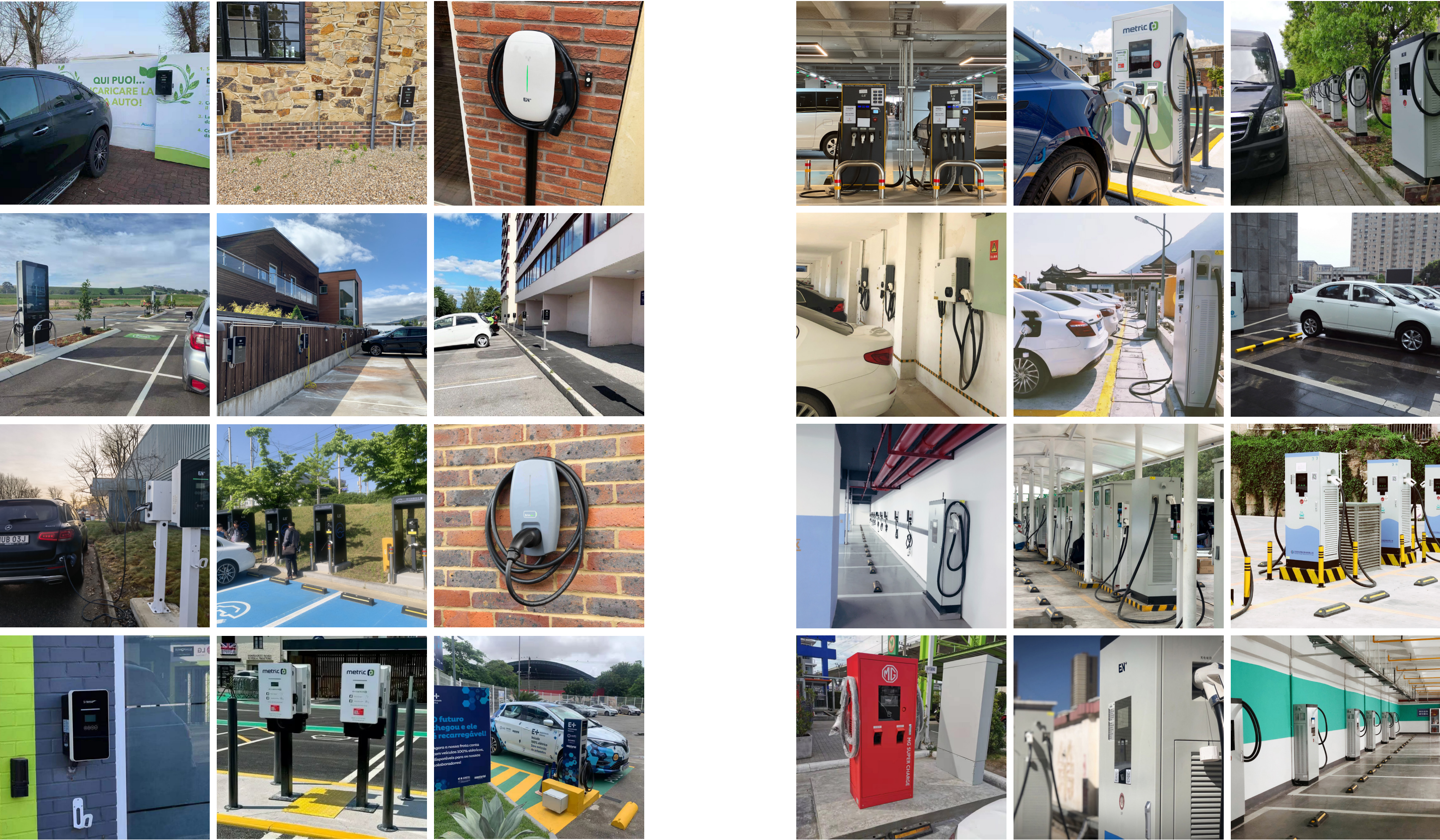


At home, at work, or on the go, we have the electric vehicle charging solution for you. Our solution is suitable for multiple scenarios. We help you to connect with your customers. EN+ offers all you need for running a robust charging business.

<b>Smart Charging Parking Lots</b>  Residential Parking Lot	<b>Charging Stations in Shopping Malls and Tourist Attractions</b>  Commercial Parking Lot	<b>Home and Private EV Charger Shared Charging</b>  Private Home Garage	<b>Battery Swapping Stations for EV Charging</b>  Energy Utilities/Storage	<b>Remote Charging for Logistics and Private Vehicles</b>  Mobile Charging
<b>Centralized Charging Stations for Buses</b>  Bus Charging Station	<b>OEM Support for Vehicle Manufacturers</b>  Automobile Service Shop	<b>Centralized Charging Stations for Rental Services</b>  Taxi Charging Station	<b>Centralized Charging Stations for Public Use</b>  Super charging station	<b>Charging Stations at Highway Service Areas</b>  Super charging station



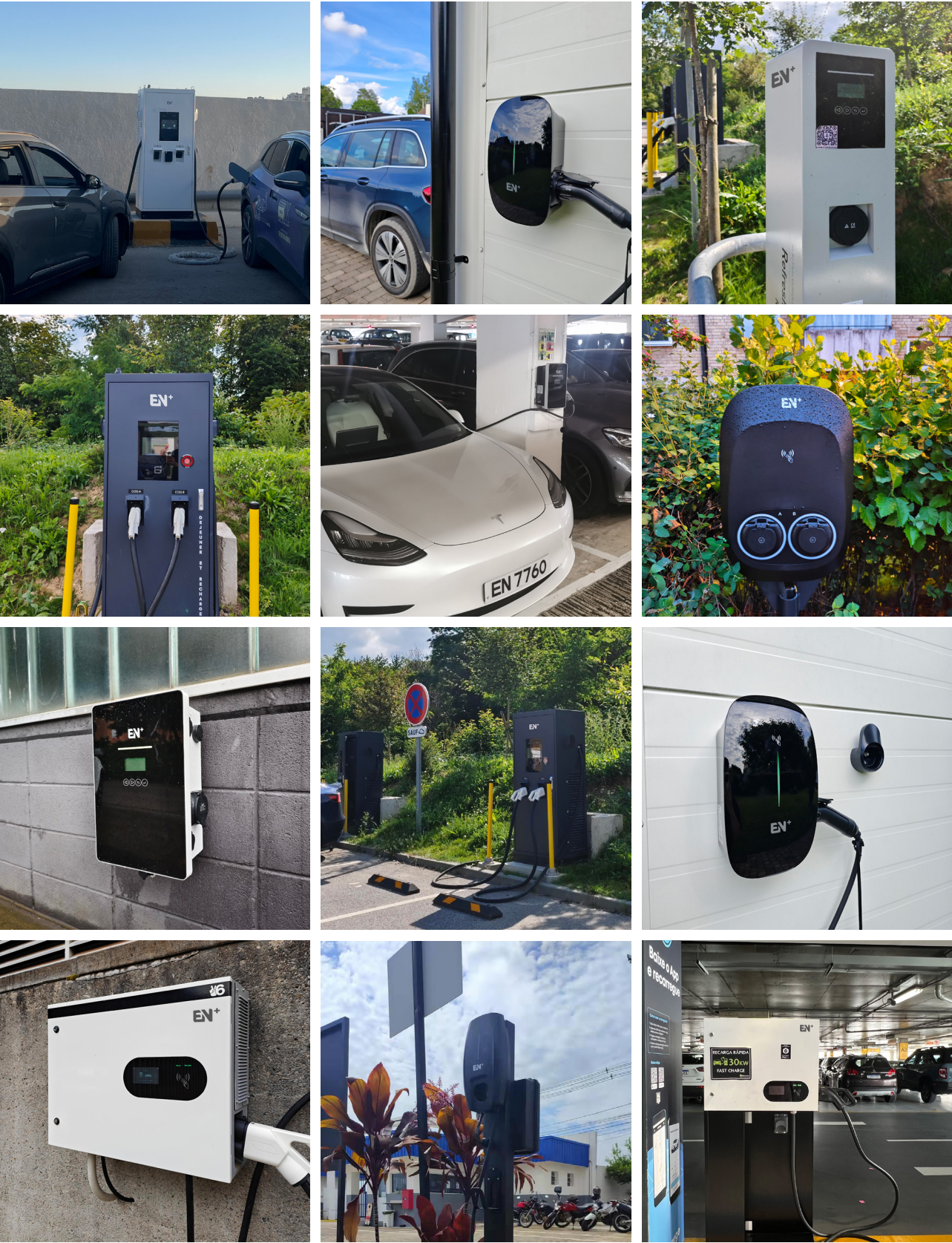
Project Cases







Project Cases



**EN<sup>+</sup> Shenzhen EN Plus Tech Co., Ltd.**

Address: Floor 2, Building 6, No. 1026 Songbai Road, Nanshan District, Shenzhen, China.

Postal Code: 518055

Sales Representative: [sales@en-plus.com.cn](mailto:sales@en-plus.com.cn)

After-sales Support: [support@en-plus.com.cn](mailto:support@en-plus.com.cn)

Website: [www.en-plustech.com](http://www.en-plustech.com)

Version: 2024 Rev. 09.14

