



PRODUCTS MANUAL

Shenzhen EN Plus Tech Co., Ltd.

Global Supplier for EV Charging Facilities
and Software Platform



Company Introduction

- Founded in 2015, total-solution supplier of EV charging station and cloud management system
- Top R&D team in China, rich experience in international protocol (OCPP 1.6J above)
- Full-range products, exported to over 50 countries and regions since 2016
- Independent capability of design, manufacture and sales, all-in-one service
- Product line covers Portable Charger, AC Charger, DC Charger, Power Module and Cloud Management System and Mobile App, all independently developed by ourselves



Global Partners



Certification



IATF 16949 Certification



ISO 9001 Quality Management System Certification



EN Plus Brand Trademark Registration Certification



National High-tech Enterprise Certification



Shenzhen High-tech Enterprise Certification



Management System Software Certification



Software Industry Association Member



Computer Software Copyright Registration Certification



National Patent Certification



Cape Certification



CQC Certification



CE Certification



Certification Test Report

Why Choose Us

Product Portfolio

- Rich Product Series & Certifications
- Versatile Software Ecosystem for Service
- Comprehensive Solutions for Scenario Applications

Production & Delivery

- Automotive-grade Quality Standards
- Fully Integrated Intelligent Production Line
- Digital Management System

Tech Innovation

- 100+ Independent R&D Patents
- Forward-looking Technology Research Reserves
- Efficient and Customized Services.

Service Support

- Global Market Service Capabilities
- Comprehensive Product Service Management
- 24/7 Online Support.





Memo Series Portable Box

Memo Series Portable Box adopts a wire-winding design for space-saving and easy carrying with EVs. It employs comprehensive electrical protection plus IP67 ingress proof and UV resistance to ensure charging safety.

EU Standard



Simple Use

- Portable, easy to carry
- Wire winding design
- Plug to Charge

Legible Identification

- Clear LED light indication
- Charging status identification
- Color OLED

Robust Structure

- Corrosion proof
- IP67 ingress protection (body)

Security & Safe

- Over & residual protection on current, voltage & frequency
- Surge Protection
- Over temperature protection

Memo Series Portable Box

| Datasheet | Model | AC3500-DE-20 |
|--------------------------|------------------------|--|
| Electrical Specification | Power Supply | 1P+N+PE |
| | Rated Voltage | 230V AC |
| | Rated Current | 16A |
| | Frequency | 50 / 60HZ |
| | Rated Power | 3.5kW |
| Basic Attributes | Charge Connector | Type 2 Cable |
| | Cable Length | 4m |
| | Enclosure | PC943 |
| | LCD | 1.3" Monochrome Screen |
| | LED Indicator | Blue |
| | Start Mode | Plug to Charge |
| Safety | Ingress Protection | IP67 (Body) |
| | Impact Protection | IK10 (w / o Screen) |
| | Electrical Protection | Over current protection, Residual current protection Surge protection, Over / Under voltage protection, Over / Under frequency protection, Over temperature protection |
| | Certification Standard | IEC 62752-2018 IEC61851-21-2:2021 |
| | Warranty | 2 Years |
| Working Environment | Operation Temperature | -30°C-+50°C |
| | Work Humidity | 5%-95% |
| | Work Altitude | ≤2000m |
| Package | Product Dimension | 212*92*55mm (H*W*D) |
| | Package Dimension | 300*130*270mm (L*W*H) |
| | Net Weight | 2kg |
| | Gross Weight | 3kg |
| | External Package | Handbag / Carton |





Bello Series Home Wallbox

Bello Series designs to provide a stable and versatile charging environment for household use. The 7kW RFID active single-phase AC charger ensures 32A output current as a maximum. Its high compatibility allows charging for all Type 2 EV models.

EU Standard



Small Footprint Design

- A5 paper size equipment
- 4m wiring cables

Simple Operation

- Start / Stop charging by RFID card
- Simple HMI with LED indicators

Flexible Option

- Type 2 charging cable
- 16A / 32A adjustable output current
- RFID authentication, optional with Plug to Charge
- Wall-mounted / floor-stand installation

Secure & Safe

- Over temperature protection
- Over & Residual current detection

Bello Series Home Wallbox

| Datasheet | Model | AC7000-AE-05 |
|--------------------------|------------------------|--|
| Electrical Specification | Power Supply | 1P+N+PE |
| | Rated Voltage | 230V AC |
| | Rated Current | 32A |
| | Frequency | 50 / 60HZ |
| | Rated Power | 7kW |
| Basic Attributes | Charge Connector | Type 2 Cable |
| | Cable Length | 4m |
| | Enclosure | PC943 |
| Interactive Interface | LED Indicator | Green / Yellow / Red |
| | RFID Reader | Mifare ISO / IEC 14443A |
| | Start Mode | Plug to Charge / RFID |
| Safety | Ingress Protection | IP65 |
| | Impact Protection | IK08 |
| | Electrical Protection | Over current protection, Residual current protection Surge protection, Over / Under voltage protection, Over / Under frequency protection, Over temperature protection |
| | Certification Standard | EN IEC 61851-1:2019 IEC 61851-1:2017 IEC61851-21-2:2021 |
| | Warranty | 2 Years |
| Working Environment | Operation Temperature | -30°C~+50°C |
| | Work Humidity | 5%-95% |
| | Work Altitude | ≤2000m |
| Package | Product Dimension | 233*150*70mm (H*W*D) |
| | Package Dimension | 380*285*175mm (L*W*H) |
| | Net Weight | 3kg |
| | Gross Weight | 4kg |
| | External Package | Carton |



Alvis Series Home Wallbox

The stylish Alvis Series Home Wallbox is perfect for Type 2 EV models. With network connectivity and OCPP 1.6 compatibility, it offers load balancing feature. Ideal for residential use, it combines style and functionality. It is certified with ETSI EN 303 645, ensuring network security for consumer IoT devices.

EU & UK Standard



Intelligent

- Connectivity: Wi-Fi+4G / Wi-Fi+Ethernet
- Smart mobile App control
- Scheduled charging
- OCPP 1.6 Json
- Dynamic load balancing

Flexible

- Type 2 cable
- Wall-mount / Pole-mount installation
- App operation / RFID authentication / Plug to Charge

Secure & Safe

- 30mA Type A + 6mA DC
- Relay-sticking protection



UK CA EN 303 645 (UK Standard Only)

Alvis Series Home Wallbox

| Datasheet | Model | AC7000-AE-45 | AC7000-AB-45 | AC011K-AE-25 |
|--------------------------|------------------------|--|------------------|----------------|
| Electrical Specification | Power Supply | 1P+N+PE | | 3P+N+PE |
| | Rated Voltage | 230V AC | | 400V AC |
| | Rated Current | 32A | | 16A |
| | Frequency | 50/60Hz | | |
| | Rated Power | 7kW | | 11kW |
| Basic Attributes | Product Standard | EU | UK | EU |
| | Charge Connector | Type 2 Cable | | |
| | Cable Length | 7m Cable | | |
| | Enclosure | PC943 | | |
| | Installation | Wall-mount / Pole-mount (Optional) | | |
| Interactive Interface | LED Indicator | Green / Yellow / Red | | |
| | RFID Reader | Mifare ISO / IEC 14443 A | | |
| | Start Mode | Plug to Charge / RFID Card / App | | |
| Communication | Wi-Fi & Ethernet | Standard | | Wi-Fi |
| | Wi-Fi & 4G | Optional | | / |
| | Bluetooth | Hardware Ready | | / |
| | OCPP | OCPP 1.6 Json | | |
| Safety | RCD | 30mA Type A+6mA DC | | |
| | Ingress Protection | IP65 | | |
| | Impact Protection | IK08 | | |
| | Electrical Protection | Over current protection, Residual current protection Surge protection, Over / Under voltage protection, Over / Under frequency protection, Over temperature protection | | |
| | Certification | CE / CB / RoHS | UKCA / EN 303645 | CE / CB / RoHS |
| | Certification Standard | IEC 61851-1:2017 EN IEC 61851-1:2019 EN IEC 61851-21-2:2021 EN IEC 61000-6-1:2019 EN IEC 61000-6-3:2007+A1 EN 300 328 V2.2.2:2019 EN 300 330 V2.1.1:2017 EN 301 489-1 V2.2.3:2019 EN 301 489-3 V2.1.1:2019 EN 301 489-17 V3.2.0:2017 EN 62311:2020 BS 7671:2018+A2:2022 | | |
| | Warranty | 2 Years | | |
| Working Environment | Operation Temperature | -30℃ ~+50℃ | | |
| | Work Humidity | 5%-95% | | |
| | Work Altitude | ≤2000m | | |
| Package | Product Dimension | 328*181*87mm (H*W*D) | | |
| | Package Dimension | 420*280*190mm (L*W*H) | | |
| | Net Weight | 3kg | | |
| | Gross Weight | 4kg | | |
| | External Package | Carton | | |



Caro Series Home Wallbox

Caro Series Home Wallbox, a 2023 Red Dot Award winner, adds elegance to any charging location, be it at home, in business settings, or semi-public areas. Solar power-compatible for eco-friendly charging, its intelligent load management system reduces grid peak pressures. Experience powerful load balancing with up to 20 chargers on a single circuit. Enjoy the flexibility of 1A grid charging, optimizing energy usage with seamless PV integration.

EU & UK Standard



Versatile

- Type 2 cable / socket
- Wall-mount / Pole-mount installation
- Three enclosure colors
- Activated by NFC

Intelligent

- Communications: Wi-Fi+4G+Bluetooth / Wi-Fi+Ethernet+Bluetooth
- App charging scheduling
- Dynamic load balancing with LBC

PV Compatible

- 0 emission PV charging
- Seamless integration with PV systems
- Adjustable current for optimized PV usage

Safe & Convenient

- 30mA Type A + 6mA DC
- Relay-sticking protection



Pearl White



Space Black



Emerald Green



UK CA EN 303 645 (UK Standard Only)

Caro Series Home Wallbox

| Datasheet | Model | AC7000-AE-35 AC7000-AB-45C | AC7000-BE-35 | ACO11K-AE-35 | ACO11K-BE-35 |
|--------------------------|------------------------------|--|----------------|--------------|---------------|
| Electrical Specification | Power Supply | 1P+N+PE | | 3P+N+PE | |
| | Rated Voltage | 230V AC | | 400V AC | |
| | Rated Current | 32A | | 16A | |
| | Frequency | 50/60Hz | | | |
| | Rated Power | 7kW | | 11kW | |
| Basic Attributes | Product Standard | AE: EU / AB: UK | EU | EU | EU |
| | Charge Connector | Type 2 Cable | Type 2 Socket | Type 2 Cable | Type 2 Socket |
| | Cable Length | 7m Cable | / | 7m Cable | / |
| | Enclosure | PC943 | | | |
| | Installation | Wall-mount / Pole-mount (Optional) | | | |
| Interactive Interface | LED Indicator | Green / Yellow / Red | | | |
| | RFID Reader | Mifare ISO / IEC 14443 A | | | |
| | Start Mode | Plug to Charge / RFID Card / App | | | |
| Communication | Wi-Fi & Bluetooth & Ethernet | Standard | | | |
| | Wi-Fi & Bluetooth & 4G | Optional | | | |
| | OCPP | OCPP 1.6 Json | | | |
| Safety | RCD | 30mA Type A + 6mA DC | | | |
| | Ingress Protection | IP65 | IP54 | IP65 | IP54 |
| | Impact Protection | IK08 | | | |
| | Electrical Protection | Over current protection, Residual current protection Surge protection, Over / Under voltage protection, Over / Under frequency protection, Over temperature protection | | | |
| | Certification | AE: CE / CB / RoHS AB: UKCA / EN 303645 | CE / CB / RoHS | | |
| | Certification Standard | IEC 61851-1:2017 EN IEC 61851-1:2019 EN IEC 61851-21-2:2021 EN IEC 61000-6-1:2019 EN IEC 61000-6-3:2007+A1 EN 300 328 V2.2.2:2019 EN 300 330 V2.1.1:2017 EN 301 489-1 V2.2.3:2019 EN 301 489-3 V2.1.1:2019 EN 301 489-17 V3.2.0:2017 EN 62311:2020 BS 7671:2018+A2:2022 | | | |
| | Warranty | 2 Years | | | |
| Working Environment | Operation Temperature | -30℃ ~+50℃ | | | |
| | Work Humidity | 5%-95% | | | |
| | Work Altitude | ≤2000m | | | |
| | | | | | |
| Package | Product Dimension | 344*192*100mm (H*W*D) Cable 344*192*135mm (H*W*D) Socket | | | |
| | Package Dimension | 430*330*235mm (L*W*H) Cable 430*245*210mm (L*W*H) Socket | | | |
| | Net Weight | 4kg | 2kg | 4kg | 2kg |
| | Gross Weight | 5kg | 3kg | 6kg | 3kg |
| | External Package | Carton | | | |



Caro Pro Series Home Wallbox

Caro Pro Series Home Wallbox embodies simplicity and environmental responsibility. Not only does this wallbox support PV charging, it also incorporates dynamic load balancing to relieve the grid during peak hours. By harnessing solar power for eco-friendly charging, it helps reduce electricity costs and meets your green objectives. Its intelligent load management ensures optimised energy use through seamless PV integration.

EU & UK Standard



Versatile

- Customizable enclosure choice
- Activated by RFID
- Convenient back plate for easy cable access

Intelligent

- Multi communications
- App charging scheduling
- Dynamic load balancing

PV Compatible

- 0 emission PV charging
- Seamless integration with PV systems
- Adjustable current for optimized PV usage

Safe & Convenient

- 30mA Type A + 6mA DC
- Relay-sticking protection
- Ergonomic and user-friendly enclosure design



EN 303 645 (UK Standard Only)

Caro Pro Series Home Wallbox

| Datasheet | Model | AC022K-AB-45C2 | AC022K-AE-45C2 |
|--------------------------|-----------------------------------|---|----------------|
| Electrical Specification | Power Supply | 3P+N+PE | |
| | Rated Voltage | 400V AC | |
| | Rated Current | 32A | |
| | Frequency | 50 / 60 HZ | |
| | Rated Power | 22kW | |
| Basic Attributes | Product Standard | UK | EU |
| | Charge Connector | Type 2 Cable | |
| | Cable Length | 7m | |
| | Enclosure | PC943 | |
| | Installation | Wall-mount / Pole-mount (Optional) | |
| Interactive Interface | LED Indicator | Green / Yellow / Red | |
| | RFID Reader | Mifare ISO / IEC14443A | |
| | Start Mode | Plug to Charge / RFID card / App | |
| Communication | Wi-Fi & Ethernet & Bluetooth & 4G | Standard | |
| | OCPP | OCPP 1.6 Json | |
| Safety | RCD | 30mA Type A + 6mA DC | |
| | Ingress Protection | IP65 | |
| | Impact Protection | IK10 | |
| | Electrical Protection | Over current protection, Residual current protection, Surge protection, Over / Under voltage protection, Over / Under frequency protection, Over temperature protection | |
| | Certification | CE, CB, RoHS, Reach, EN 303645 | |
| | Certification Standard | IEC 61851-1:2017 EN IEC 61851-1:2019 EN IEC 61851-21-2:2021 EN IEC 61000-6-1:2019 EN IEC 61000-6-3:2007+A1 EN 300 328 V2.2.2:2019 EN 300 330 V2.1.1:2017 EN 301 489-1 V2.2.3:2019 EN 301 489-3 V2.1.1:2019 EN 301 489-17 V3.2.0:2017 EN 62311:2020 BS 7671:2018+A2:2022 | |
| | Warranty | 2 years | |
| Working Environment | Noise | ≤60dB | |
| | Operation Temperature | -30℃ ~+50℃ | |
| | Work Humidity | 5%-95% | |
| | Work Altitude | ≤2000m | |
| Package | Product Dimension | 374*226*164mm (H*W*D) | |
| | Package Dimension | 430*330*235 mm (L*W*H) | |
| | Net Weight | 4kg | |
| | Gross Weight | 7kg | |
| | External Packing | Carton | |



Saro Series Home Wallbox

Saro Series Home Wallbox is designed to meet the demanding needs of homeowners. It offers a variety of connectivity options and features a compact, space-saving design. With its dynamic load management system, users can enjoy cost-effective charging solutions. It is also easy to operate and maintain via a user-friendly app or software system, ensuring maximum flexibility and convenience.

EU & UK Standard



Versatile

- Type 2 / T2S Socket
- Customizable enclosure choice
- Activated by RFID
- Convenient back plate for easy cable access

Intelligent

- Multi communications (Wi-Fi / 4G / Ethernet)
- App charging scheduling
- Dynamic load balancing

PV Compatible

- 0 emission PV charging
- Seamless integration with PV systems
- Adjustable current for optimized PV usage

Safe & Convenient

- 30mA Type A + 6mA DC
- Relay-sticking protection
- Ergonomic and user-friendly enclosure design



EN 303 645 (UK Standard Only)

Saro Series Business Wallbox

| Datasheet | Model | AC022K-AB-45C2 | AC022K-AE-45C2 |
|--------------------------|-----------------------------------|---|----------------|
| Electrical Specification | Power Supply | 3P+N+PE | |
| | Rated Voltage | 400V AC | |
| | Rated Current | 32A | |
| | Frequency | 50 / 60 HZ | |
| | Rated Power | 22kW | |
| Basic Attributes | Product Standard | UK | EU |
| | Charge Connector | Type 2 Cable | |
| | Cable Length | 7m | |
| | Enclosure | PC943 | |
| | Installation | Wall-mount / Pole-mount (Optional) | |
| Interactive Interface | LED Indicator | Green / Yellow / Red | |
| | RFID Reader | Mifare ISO / IEC14443A | |
| | Start Mode | Plug to Charge / RFID card / App | |
| Communication | Wi-Fi & Ethernet & Bluetooth & 4G | Standard | |
| | OCPP | OCPP 1.6 Json | |
| Safety | RCD | 30mA Type A + 6mA DC | |
| | Ingress Protection | IP65 | |
| | Impact Protection | IK10 | |
| | Electrical Protection | Over current protection, Residual current protection, Surge protection, Over / Under voltage protection, Over / Under frequency protection, Over temperature protection | |
| | Certification | CE, CB, RoHS, Reach, EN 303645 | |
| | Certification Standard | IEC 61851-1:2017 EN IEC 61851-1:2019 EN IEC 61851-21-2:2021 EN IEC 61000-6-1:2019 EN IEC 61000-6-3:2007+A1 EN 300 328 V2.2.2:2019 EN 300 330 V2.1.1:2017 EN 301 489-1 V2.2.3:2019 EN 301 489-3 V2.1.1:2019 EN 301 489-17 V3.2.0:2017 EN 62311:2020 BS 7671:2018+A2:2022 | |
| | Warranty | 2 years | |
| Working Environment | Noise | ≤60dB | |
| | Operation Temperature | -30°C ~+50°C | |
| | Work Humidity | 5%-95% | |
| | Work Altitude | ≤2000m | |
| Package | Product Dimension | 374*226*164mm (H*W*D) | |
| | Package Dimension | 430*330*235 mm (L*W*H) | |
| | Net Weight | 4kg | |
| | Gross Weight | 7kg | |
| | External Packing | Carton | |



Vita Series Business Wallbox

Vita Series Business Wallbox prioritizes safety and efficiency, complying with UK's EVSCP & EU standards. It seamlessly integrates into any setup. Effortlessly manage your charging through the cloud platform and remote maintenance. The sleek design ensures easy installation, while Wi-Fi & Ethernet connectivity enables convenient control via the mobile app. Rest assured, the MID certified energy meter guarantees the utmost accuracy in your charging experience.

EU & UK Standard



Simple

- Temper glass front panel
- Robust enclosure
- Easy installation
- Vinyl branding options available

Flexible

- Type 2 cable / Type 2 socket
- Wall-mount / Pole-mount installation
- App operation / RFID authentication / Plug to Charge

Intelligent

- Communications:
Wi-Fi+4G / Wi-Fi+Ethernet
- Smart mobile App control
- 2.7" monochrome screen display
- OCPP 1.6 Json

Secure & Safe

- 30mA Type A + 6mA DC
- Independent RCBO
- MID certified energy meter with accurate measurement



UK
CA EN 303 645 (UK Standard Only)

Vita Series Business Wallbox

| Datasheet | Model | AC7000-AE-44 | AC7000-BE-44 AC7000-BB-44 | AC022K-AE-44 | AC022K-BE-44 AC022K-BB-44 |
|--------------------------|------------------------|--|------------------------------|-------------------------------|------------------------------|
| Electrical Specification | Power Supply | 1P+N+PE | | 3P+N+PE | |
| | Rated Voltage | 230V AC | | 400V AC | |
| | Rated Current | 32A | | 32A | |
| | Frequency | 50/60Hz | | | |
| | Rated Power | 7kW | | 22kW | |
| Basic Attributes | Product Standard | EU | BE: EU / BB: UK | EU | BE: EU / BB: UK |
| | Charge Connector | Type 2 Cable | Type 2 Socket | Type 2 Cable | Type 2 Socket |
| | Cable Length | 7m | / | 7m | / |
| | Enclosure | PC943+Temper Glass | | Galvanized Steel+Temper Glass | |
| | Installation | Wall-mount / Pole-mount (Optional) | | | |
| Interactive Interface | LED Indicator | Green / Yellow / Red | | | |
| | LCD Display | 2.7" Monochrome Screen | | | |
| | RFID Reader | Mifare ISO / IEC 14443 A | | | |
| | Start Mode | Plug to Charge / RFID Card / App | | | |
| Communication | Wi-Fi & Ethernet | Standard | | | |
| | Wi-Fi & 4G | Standard | | | |
| | Bluetooth | Hardware Ready | | | |
| | OCPP | OCPP 1.6 Json | | | |
| Safety | RCD | 30mA Type A + 6mA DC | | | |
| | RCBO | Type A | | | |
| | Energy Meter | MID Certified | | | |
| | Ingress Protection | IP65 | IP54 | IP65 | IP54 |
| | Impact Protection | IK08 | | | |
| | Electrical Protection | Over current protection, Residual current protection Surge protection, Over / Under voltage protection, Over / Under frequency protection, Over temperature protection | | | |
| | Certification | CE / CB / Pen Fault / UKCA | | | |
| | Certification Standard | IEC 61851-1:2017 EN IEC 61851-1:2019 EN IEC 61851-21-2:2021 EN IEC 61000-6-1:2019 EN IEC61000-6-2 / -4: 2019 EN IEC 61000-6-3:2007+A1 EN 300 328 V2.2.2:2019 EN 300 330 V2.1.1:2017 EN 301 489-1 V2.2.3:2019 EN 301 489-3 V2.1.1:2019 EN 301 489-17 V3.2.0:2017 EN 62311:2020 BS 7671:2018+A2:2022 | | | |
| | Warranty | 2 Years | | | |
| Working Environment | Operation Temperature | -30℃ --+50℃ | | | |
| | Work Humidity | 5%-95% | | | |
| | Work Altitude | ≤2000m | | | |
| Package | Product Dimension | 356*211*136mm (H*W*D) | | 452*295*148mm (H*W*D) | |
| | Package Dimension | 490*340*210mm (L*W*H) | | 570*390*220mm (L*W*H) | |
| | Net Weight | 6kg Cable | 3kg Socket | 14kg | 10kg |
| | Gross Weight | 7kg Cable | 4kg Socket | 16kg | 12kg |
| | External Package | Carton | | | |



Nano Series Duo Wallbox

The Nano Series is a new generation of 2X22kW AC chargers, available in both commercial and home versions, suitable for use in residential communities, commercial properties, and private settings. It supports remote parameter viewing and control, Ad Hoc, and card activation. It has 8 built-in safety protection functions to ensure user safety. It can be equipped with a wireless router that supports full network access or be wire connected to the network. Smart solutions such as load balancing is also available to save costs and facilitate management.

EU & UK Standard



Innovative

- Type 2 socket / cable, 2x11kW / 1x22kW / 2x22kW simultaneously
- Suitable for home & semi-public use
- Easy to install by plugging back plate
- Installation cost saving

Intelligent

- Communications: Wi-Fi+4G+Bluetooth+Ethernet
- OCPP 1.6 Json
- Dynamic load balancing with LBC

Flexible

- Compatible with all EV & PHEV models
- App operation / RFID authentication / Plug to Charge
- Optional socket and cable version
- Option to select MID meter or opt out

Secure & Safe

- 30mA Type A + 6mA DC
- Independent RCBO
- MID certified energy meter with accurate measurement
- IK10



Nano Series Duo Wallbox

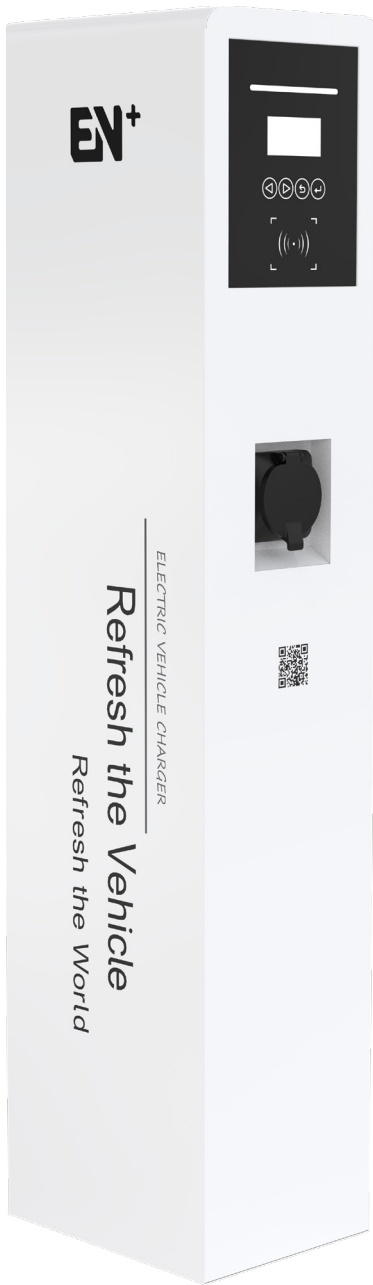
| Datasheet | Model | AC022K-BE-44D | AC022K-AE-44D | AC044K-BE-44D | AC044K-AE-44D |
|--------------------------|------------------------------|--|-----------------------|-----------------------|-----------------------|
| Electrical Specification | Power Supply | 3P+N+PE | | | |
| | Rated Voltage | 400V AC±20% | | | |
| | Rated Current | 32A | | 2x32A | |
| | Frequency | 50/60Hz | | | |
| | Rated Power | 2*11KW/1*22KW | | 2*22KW | |
| | Power Measurement Accuracy | 1% with MID | | | |
| Classic Attributes | Charge Connector | Type 2 Socket | Type 2 Cable | Type 2 Socket | Type 2 Cable |
| | Cable Length | / | 7m | / | 7m |
| | Enclosure | PC943 | | | |
| | Installation | Wall-mount / Pole-mount (Optional) | | | |
| Interactive Interface | LED Indicator | Green / Yellow / Red | | | |
| | Screen | / | | | |
| | RFID Reader | Mifare ISO / IEC14443A | | | |
| | Start Mode | Plug to Charge / RFID card / App | | | |
| Communication | Wi-Fi & Ethernet & Bluetooth | Standard | | | |
| | 4G | Standard | | | |
| | OCPP | OCPP 1.6 Json | | | |
| Safety | RCD | 30mA Type A + 6mA DC | | | |
| | RCBO | Type A | | | |
| | Ingress Protection | IP54 | | | |
| | Impact Protection | IK10 | | | |
| | Electrical Protection | Over current protection, Residual current protection, Surge protection, Over / Under voltage protection, Over / Under frequency protection, Over temperature protection | | | |
| | Certification | CE / CB / RoHS / Reach | | | |
| | Certification Standard | IEC 61851-1:2017 EN IEC 61851-1:2019 EN IEC 61851-21-2:2021 ENIEC 61000-6-1:2019 EN IEC 61000-6-3:2007+A1 EN 300 328 V2.2.2:2019 EN 300 330 V2.1.1:2017 EN 301 489-1 V2.2.3:2019 EN IEC61000-6-2 / -4:2019 EN 301 489-3 V2.1.1:2019 EN 301 489-17 V3.2.0:2017 EN 62311:2020 BS 7671:2018+A2:2022 | | | |
| | Warranty | 2 Years | | | |
| | Working Environment | Operation Temperature | -30℃ --+50℃ | | |
| Work Humidity | | 5%-95% | | | |
| Work Altitude | | ≤2000m | | | |
| Package | Product Dimension | 540*360*199mm (H*W*D) | 540*360*199mm (H*W*D) | 540*360*199mm (H*W*D) | 540*360*199mm (H*W*D) |
| | Package Dimension | 620*466*245mm (L*W*H) | 635*430*345mm (L*W*H) | 620*466*245mm (L*W*H) | 635*430*345mm (L*W*H) |
| | Net Weight | 10kg | 20kg | 10kg | 20kg |
| | Gross Weight | 12kg | 21kg | 12kg | 21kg |
| | External Packing | Carton | | | |



Cubo Series AC Charger

Cubo Series AC Charger offers simultaneous dual charging. With high-output capability and flexible modes, it achieves extensive compatibility. Its sleek design is customizable, allowing for personalized branding. Advanced safety features ensure secure charging in any environment.

EU Standard



Minimalistic

- Compact, slimline enclosure
- Built-in socket holder
- Easy installation

Flexible

- Type 2 cable
- Floor-stand installation
- App operation / RFID authentication / Plug to Charge

Intelligent

- Communications:
Wi-Fi+4G+Bluetooth / Wi-Fi+Ethernet+Bluetooth
- Smart mobile App control
- Scheduled charging– for low tariffs
- OCPP 1.6 Json
- Dynamic load balancing

Secure & Safe

- 30mA Type A + 6mA DC
- Independent RCBO
- MID certified energy meter with accurate measurement



Cubo Series AC Charger

| Datasheet | Model | AC014K-BE-34 | AC044K-BE-34 |
|--------------------------|------------------------------|---|--------------|
| Electrical Specification | Power Supply | 1P+N+PE | 3P+N+PE |
| | Rated Voltage | 230V AC | 400V AC |
| | Rated Current | 2X32A | 2X32A |
| | Frequency | 50 / 60Hz | |
| | Rated Power | 2x7kW | 2x22kW |
| Basic Attributes | Charge Connector | 2xType 2 Socket (2xType 2 Cable Optional) | |
| | Enclosure | Galvanized Steel+Temper Glass | |
| | Installation | Floor Stand | |
| Interactive Interface | LED Indicator | Green / Yellow / Red | |
| | LCD Display | 2.7" Monochrome Screen | |
| | RFID Reader | Mifare ISO / IEC 14443A | |
| | Start Mode | Plug to Charge / RFID Card/App | |
| Communication | Wi-Fi & Bluetooth & Ethernet | Yes | |
| | Wi-Fi & Bluetooth & 4G | Yes | |
| | OCPP | OCPP 1.6 Json | |
| Safety | RCD | 30mA Type A + 6mA DC | |
| | RCBO | Type A | |
| | Energy Meter | MID Certified | |
| | Ingress Protection | IP54 | |
| | Impact Protection | IK08 | |
| | Electrical Protection | Over current protection, Residual current protection, Short circuit protection, Surge protection, Over / Under voltage protection, Over / Under frequency protection, Over temperature protection | |
| | Certification | CE / CB | |
| | Certification Standard | EN IEC 61851-1:2019 IEC61851-1:2017 IEC61851-21-2:2021 | |
| | Warranty | 2 Years | |
| Working Environment | Operation Temperature | -30℃ -+50℃ | |
| | Work Humidity | 5%-95% | |
| | Work Altitude | ≤2000m | |
| Package | Product Dimension | 1200*290*230mm (H*W*D) | |
| | Package Dimension | 1318*434*357mm (L*W*H) | |
| | Net Weight | 29kg | 28kg |
| | Gross Weight | 49kg | 45kg |
| | External Package | Wood Case | |

Corebox Series DC Charger

Corebox Series DC Charger is designed for efficiency and convenience, it delivers high-speed charging to keep you on the move. With its intelligent features, it offers seamless integration with smart grids, load balancing, and remote monitoring capabilities. The sleek and compact design fits perfectly into any environment, while the user-friendly interface provides a hassle-free experience. Equipped with advanced safety features and compatibility with various EV models, this DC charger is the perfect solution for both commercial and public charging stations.

EU Standard



Innovative

- Anti-theft lock with special unlock tool
- App control & operation
- Faster charging with smaller installation space

Intelligent

- OCPP 1.6 Json

Flexible

- Wall-mount / Pole-mount (Optional)
- Start modes: RFID / App

Secure and Safe

- Modular design, easy to repair and replace
- Emergency stop switch, improving the safety



Corebox Series DC Charger

| Datasheet | Model | DC030K |
|--------------------------|------------------------|--|
| Electrical Specification | Power Supply | 3P+N+PE |
| | Input Voltage | 400V ±10% AC |
| | Input Current | 48A |
| | Input Frequency | 50 / 60HZ |
| | Output Voltage | 200-1000V DC |
| | Maximum Current | 80A |
| | Maximum Output Power | 30kW |
| Basic Attributes | Charge Connector | CCS2 |
| | Cable Length | 5m |
| | Enclosure | Galvanized Steel |
| | Installation | Wall-mount / Pole-mount (Optional) |
| Interactive Interface | LED Indicator | Green / Yellow / Red |
| | LCD Display | 4.3' Color Touch Display |
| | RFID Reader | Support |
| | Start Mode | App / QR / RFID Card |
| Communication | Wi-Fi & Ethernet | Yes |
| | 4G | Optional |
| | OCPP | OCPP 1.6 Json |
| Electrical Parameter | Efficiency | Max 95.5% |
| | Power Factor | ≥0.99@50%~100% |
| Loading | THD | ≤5%@100% Loading |
| | Ripple Factor | ≤±1% |
| Safety | RCD | Optional |
| | Emergency Stop | Yes |
| | Ingress Protection | IP54 |
| | Impact Protection | IK10 (w / o screen) |
| | Electrical Protection | Over current protection, Residual current protection, Short circuit protection, Surge protection, Over / Under voltage protection, Over / Under frequency protection, Over / Under temperature protection |
| | Certification | CE / CB |
| | Certification Standard | EN IEC 61851-1 : 2019, EN 61851-23 : 2014, EN 61851-24:2014 EMC : EN 301489-1 V 2.2.3 : 2019 EN 301489-3 V 2.1.1 : 2019 EN 301489-17 V 3.2.0 : 2017 EN IEC 61000-6-2 : 2019 EN IEC 61000-6-4 : 2019 EN IEC 61851-21-2 : 2021 EN IEC 62311 : 2020 |
| | Warranty | 2 Years |
| Working Environment | Cooling Method | Fan Cooling |
| | Noise | ≤65dB@22°C |
| | Operation Temperature | -30°C ~+50°C |
| | Work Humidity | 5%~95% |
| | Work Altitude | <2000m |
| Package | Product Dimension | 706*570*209mm (W*D*H) |
| | Package Dimension | 846*772*412mm (W*D*H) |
| | Net Weight | 35kg |
| | Gross Weight | 40kg |
| | External Package | Carton |



Mobox Series DC Charger

Mobox Series DC Charger features an integrated portable design characterised by compact size and lightweight construction. This design allows for quick power connection, easy mobility and convenient vehicle transport.

EU Standard



Innovative

- Anti-theft screw
- App control & operation
- Faster charging with smaller installation space

Intelligent

- 10' touch display
- OCPP 1.6 Json

Flexible

- Wall-mount / Pole-mount (Optional)
- Start Mode: App / QR code / RFID Card / POS (Optional)

Secure and Safe

- Modular design, easy to repair and replace
- IP54 high ingress protection level
- MID Meter (Optional)



Mobox Series DC Charger

| Datasheet | Model | DC030K | DC040K |
|--------------------------|------------------------|---|---------|
| Electrical Specification | Power Supply | 3P+N+PE | 3P+N+PE |
| | Input Voltage | 400V AC ±10% | |
| | Input Current | 47A | 63A |
| | Input Frequency | 50 / 60HZ | |
| | Output Voltage | 200-1000V DC | |
| | Maximum Output Current | 100A | 133.3A |
| | Maximum Output Power | 30kW | 40kW |
| Basic Attributes | Charge Connector | CSS2 | |
| | Number of Cable | 1 | |
| | Cable Length | 5m | |
| | Enclosure | Galvanized Steel | |
| | Installation | Wall-mount / Pole-mount (Optional) | |
| Interactive Interface | LED Indicator | Green / Yellow / Red | |
| | LCD Display | 10' Color Touch Display | |
| | RFID Reader | Mifare ISO / IEC 14443 A&B | |
| | Start Mode | App / QR code / RFID Card / POS (Optional) | |
| Communication | Wi-Fi & Ethernet | Standard | |
| | 4G | Yes | |
| | OCPP | OCPP 1.6 Json | |
| Electrical Parameter | Efficiency | Max 95.5% | |
| | Power Factor | ≥0.99@50%-100% Loading | |
| | THD | ≤5%@100% Loading | |
| | Ripple Factor | ≤±1% | |
| Safety | RCD | Type A | |
| | Emergency Stop | Yes | |
| | Ingress Protection | IP54 | |
| | Impact Protection | IK10 (w / o Screen) | |
| | Electrical Protection | Over current protection, Residual current protection, Short circuit protection, Surge protection, Over / Under voltage protection, Over / Under frequency protection, Over / Under temperature protection | |
| | Certification | CE / CB | |
| | Certification Standard | EN IEC 61851-1:2019 IEC 61851-1:2017 IEC 61851-21-2:2021 EN 61851-23:2014 EN 61851-24:2014 | |
| | Warranty | 2 Years | |
| Working Environment | Cooling Method | Fan Cooling | |
| | Noise | ≤65dB@22°C | |
| | Operation Temperature | -30°C ~+50°C | |
| | Work Humidity | 5%-95% | |
| | Work Altitude | <2000m | |
| Package | Product Dimension | 550*300*850mm (W*D*H) | |
| | Package Dimension | 650*960*400mm (L*W*H) | |
| | Net Weight | 79kg | |
| | Gross Weight | 110kg | |
| | External Package | Wood Case | |



Turbo Series DC Charger

Turbo Series DC Charger, delivering lightning-fast charging speeds ranging from 60-120kW. Designed for high-powered performance, it keeps electric vehicles on the road in no time. Seamlessly integrating with smart grids, it optimizes energy usage and enables remote monitoring and control. The sleek and robust design ensures durability and easy installation in any environment. Equipped with advanced safety features and compatibility with various electric vehicle models, this smart DC charger offers fast, efficient, and future-proof charging.

EU Standard



Efficient

- One charger with multiple outputs, simultaneously charging
- Output up to 120kW
- Support full power output for 300A cable

Flexible

- App operation / RFID authentication
- CCS2 as standard, CHAdeMO, CCS1 and GB / T support is customizable
- Flexible allocation of 30kW granularity
- Optional with POS machine & cable management
- Multi-language support

Intelligent

- Ethernet / 4G / Wi-Fi communication all supported
- OCPP 1.6 Json
- Intelligent operation by App and cashless payment

Secure & Safe

- Full level of electrical protection
- IK10 (w / o screen) impact protection
- MID Meter (Optional)



Turbo Series DC Charger

| Datasheet | Model | DC060K Pro | DC120K Pro |
|--------------------------|------------------------|---|--|
| Electrical Specification | Power Supply | 3P+N+PE | |
| | Rated Voltage | 3Φ4W 400V AC ±10% | |
| | Rated Current | 96A | 190A |
| | Frequency | 50 / 60Hz | |
| | Output Voltage | 200-1000V DC | |
| | Maximum Output Current | 300A | |
| | Rated Power | 60kW | 120kW (75kW for CHAdeMO) |
| Basic Attributes | Charge Connector | CCS2+CCS2 (200A) | CCS2 300A+CCS2 300A CCS2 300A+CHAdeMO 125A CCS2 300A+GBT 250A CCS1 300A+GBT 250A GBT 250A+GBT 250A |
| | Cable Length | 5m | |
| | Enclosure | Galvanized Steel | |
| | Installation | Floor Stand | |
| Interactive Interface | Cable Management | Optional | |
| | LED indicator | Green / Yellow / Red | |
| | LCD Display | 10.1" Color Touch Display | |
| | RFID Reader | Mifare ISO / IEC 14443A&B | |
| Communication | Start Mode | App / QR code / RFID Card / POS (Optional) | |
| | Ethernet | Yes | |
| | 4G | Yes | |
| | OCPP | OCPP 1.6 Json | |
| Electrical Parameter | Efficiency | Max 95.5% | |
| | Power Factor | ≥0.99@50%-100%Loading | |
| | THD | ≤5%@100%Loading | |
| | Ripple Factor | ≤±1% | |
| Safety | RCD | Type A | |
| | Emergency Stop | Yes | |
| | Ingress Protection | IP54 | |
| | Impact Protection | IK10 (w / o Screen) | |
| | Electrical Protection | Over current protection, Residual current protection, Short circuit protection, Surge protection, Over / Under voltage protection, Over / Under frequency protection, Over / Under temperature protection | |
| | Certification | CE / CB | |
| | Certification Standard | EN IEC 61851-1:2019 IEC 61851-1:2017 IEC 61851-21-2:2021 EN 61851-23:2014 EN 61851-24:2014 | |
| | Warranty | 2 Years | |
| Working Environment | Cooling Method | Fan Cooling | |
| | Noise | ≤65dB@22°C | |
| | Operation Temperature | -30° C ~+50° C | |
| | Work Humidity | 5%-95% | |
| Package | Work Altitude | <2000m | |
| | Product Dimension | 750*525*1820mm (W*D*H) Cable Management: 1060*804*222mm (W*D*H) | |
| | Package Dimension | 1030*620*2100mm (L*W*H) Cable Management: 1320*480*390mm (L*W*H) | |
| | Net Weight | 320kg | |
| | Gross Weight | 364kg | |
| | External Package | Wood Case | |

Rocket Series DC Charger

The Rocket Series DC Charger uses a 30kW/40kW constant power module to reduce charging time with high current output. It smartly allocates power to meet different vehicle charging needs for safe and fast charging. With IP54 protection, it adapts to all weather conditions and has multiple protection functions for user safety. Maintenance is easy with support for remote OTA upgrades and operation/maintenance platforms.

EU Standard



Efficient

- CCS2 as standard, CCS1, CHAdeMO and GB / T support is customizable
- Two connectors up to 300kW in total
- Wide voltage range: 200-1000V DC

Flexible

- App / RFID / QR Code
- POS terminal with contactless card payment

Intelligent

- Multiple communication: Ethernet / 4G / Wi-Fi
- OCPP 1.6 Json with CMS
- E-payment through App / POS

Secure & Safe

- Ingression protection: IP54
- MID Meter (Optional)



Rocket Series DC Charger

| Datasheet | Model | DC300K | DC240K | DC180K |
|--------------------------|------------------------|--|--------|--------|
| Electrical Specification | Power Supply | 3P+N+PE | | |
| | Input Voltage | 400V AC ±10% | | |
| | Input Current | 471A | 377A | 283A |
| | Input Frequency | 50 / 60Hz | | |
| | Output Voltage | 200-1000V DC | | |
| | Maximum Current | 350A | | |
| | Rated Power | 300kW | 240kW | 180kW |
| Basic Attributes | Charge Connector | CCS2+CCS2 | | |
| | Cable Length | 5m | | |
| | Enclosure | Galvanized Steel | | |
| | Installation | Floor Stand | | |
| Interactive Interface | LED indicator | Green / Yellow / Red | | |
| | LCD Display | 10.1" Color (Touch Display) | | |
| | Start Mode | App / QR / RFID Card / POS (Optional) | | |
| | Cable Management | Optional | | |
| Communication | Wi-Fi | Yes | | |
| | Ethernet | Yes | | |
| | 4G | Yes | | |
| | OCPP | OCPP 1.6 Json | | |
| Electrical Parameter | Efficiency | Max 95.5% | | |
| | Power Factor | ≥0.99@50%-100% Loading | | |
| | THD | ≤5%@100% Loading | | |
| | Ripple Factor | ≤±1% | | |
| Safety | RCD | Type A | | |
| | Emergency Stop | Yes | | |
| | Ingress Protection | IP54 | | |
| | Impact Protection | IK10 (w / o Screen) | | |
| | Electrical Protection | Over current protection, Residual current protection,Short circuit protection, Surge protection,Over / Under voltage protection, Over / Under frequency protection,Over / Under temperature protection | | |
| | Certification | CE / CB | | |
| | Certification Standard | EN IEC 61851-1:2019 IEC 61851-1:2017 IEC 61851-21-2:2012 EN 61851-23:2014 EN 61851-24:2014 | | |
| Working Environment | Cooling Method | Fan Cooling | | |
| | Noise | ≤65dB@22°C | | |
| | Operation Temperature | -30°C ~+50°C | | |
| | Work Humidity | 5%~95% | | |
| | Work Altitude | <2000m | | |
| Package | Product Dimension | Charger: 800*750*2000mm (W*D*H) Cable Management: 1060*804*222mm (W*D*H) | | |
| | Package Dimension | Charger: 960*908*2200mm (L*W*H) Cable Management: 1320*480*390mm (L*W*H) | | |
| | Net Weight | 481kg | 445kg | 438kg |
| | Gross Weight | 525kg | 489kg | 489kg |
| | External Package | Wood Case | | |

Cloud Platform

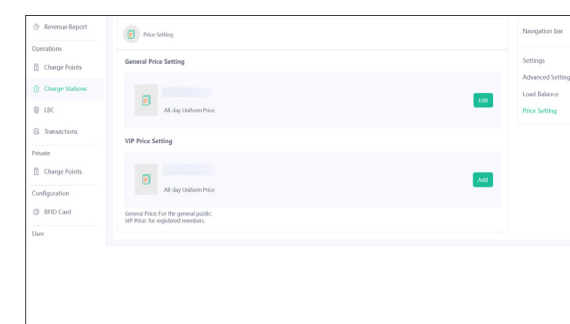
Dedicated to enable the future of e-Mobility by providing the most open, secure and robust charging network everywhere, a charging platform based on the cloud server makes it simple and convenient to meet the diverse demands of charger operators, charging users and e-Mobility service providers. We provide everything you need to offer a complete EV charging solution.

- **Management System:** A central system for charger operators to manage charge points and monitor charging service. Status monitor, charge record, prices management, firmware upgrade, remote diagnose, and load balance are offered in one capable system.
- **Mobile App:** A charging App for EV drivers who needs charging service. Prices, locations, availability, start/stop charging, and auto billing are available in an easy way.
- **Interoperability:** Connections with e-Mobility Service Providers who have EV drivers as customers are viable through the open charge point interface protocol (OCPI).

Management System



The management system is designed for operators to manage the charge points and the charging service to all users. The future of charging is smart, and our management system is equipped with future-proof features. The system works on the cloud, which enables us to update new features rapidly.



Fee Pricing Strategy

- Use third-party payment platforms such as Stripe, PayPal, Nets for fund transactions.
- Set different fee rates for different types of users to meet different needs.

| No. | Account | Company | Country | Email | State | Created By | Create Time | Operation |
|-----|---------|---------|---------------------|-------|-----------|------------|---------------------|-----------|
| 1 | | | Algeria | | Test team | | 2023-11-20 11:30:04 | |
| 2 | | | Algeria | | Test team | | 2023-11-20 21:02:52 | |
| 3 | | | American Samoa | | Test team | | 2023-11-20 21:02:53 | |
| 4 | | | Angola | | Test team | | 2023-11-20 21:02:53 | |
| 5 | | | Antigua and Barbuda | | Test team | | 2023-11-20 21:02:53 | |
| 6 | | | Aruba | | admin | | 2022-09-13 11:18:35 | |
| 7 | | | | | admin | | 2022-07-27 07:44:15 | |
| 8 | | | | | admin | | 2022-07-27 07:44:15 | |
| 9 | | | | | admin | | 2022-07-27 07:44:15 | |
| 10 | | | | | admin | | 2022-07-27 07:44:15 | |

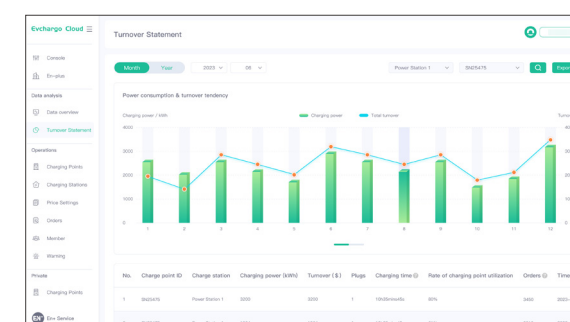
Distributor Cloud Platform Management

- Customers can grow their network by developing sub and creating merchant accounts.
- Distributor accounts are emailed to allow access to our platform, with data automatically synchronised with parent accounts.

| Device ID | Charge Point | Device Type | Device Model | Manufacturer | Brand | Operation |
|--------------------|--------------|-------------|--------------------|--------------|--------|-----------|
| AC2116-00-01-01-01 | Charge Point | Box | AC2116-00-01-01-01 | AC | AC2116 | Update |
| AC2116-00-01-01-02 | Charge Point | Box | AC2116-00-01-01-02 | AC | AC2116 | Update |
| AC2116-00-01-01-03 | Charge Point | Box | AC2116-00-01-01-03 | AC | AC2116 | Update |
| AC2116-00-01-01-04 | Charge Point | Box | AC2116-00-01-01-04 | AC | AC2116 | Update |
| AC2116-00-01-01-05 | Charge Point | Box | AC2116-00-01-01-05 | AC | AC2116 | Update |
| AC2116-00-01-01-06 | Charge Point | Box | AC2116-00-01-01-06 | AC | AC2116 | Update |
| AC2116-00-01-01-07 | Charge Point | Box | AC2116-00-01-01-07 | AC | AC2116 | Update |
| AC2116-00-01-01-08 | Charge Point | Box | AC2116-00-01-01-08 | AC | AC2116 | Update |
| AC2116-00-01-01-09 | Charge Point | Box | AC2116-00-01-01-09 | AC | AC2116 | Update |
| AC2116-00-01-01-10 | Charge Point | Box | AC2116-00-01-01-10 | AC | AC2116 | Update |

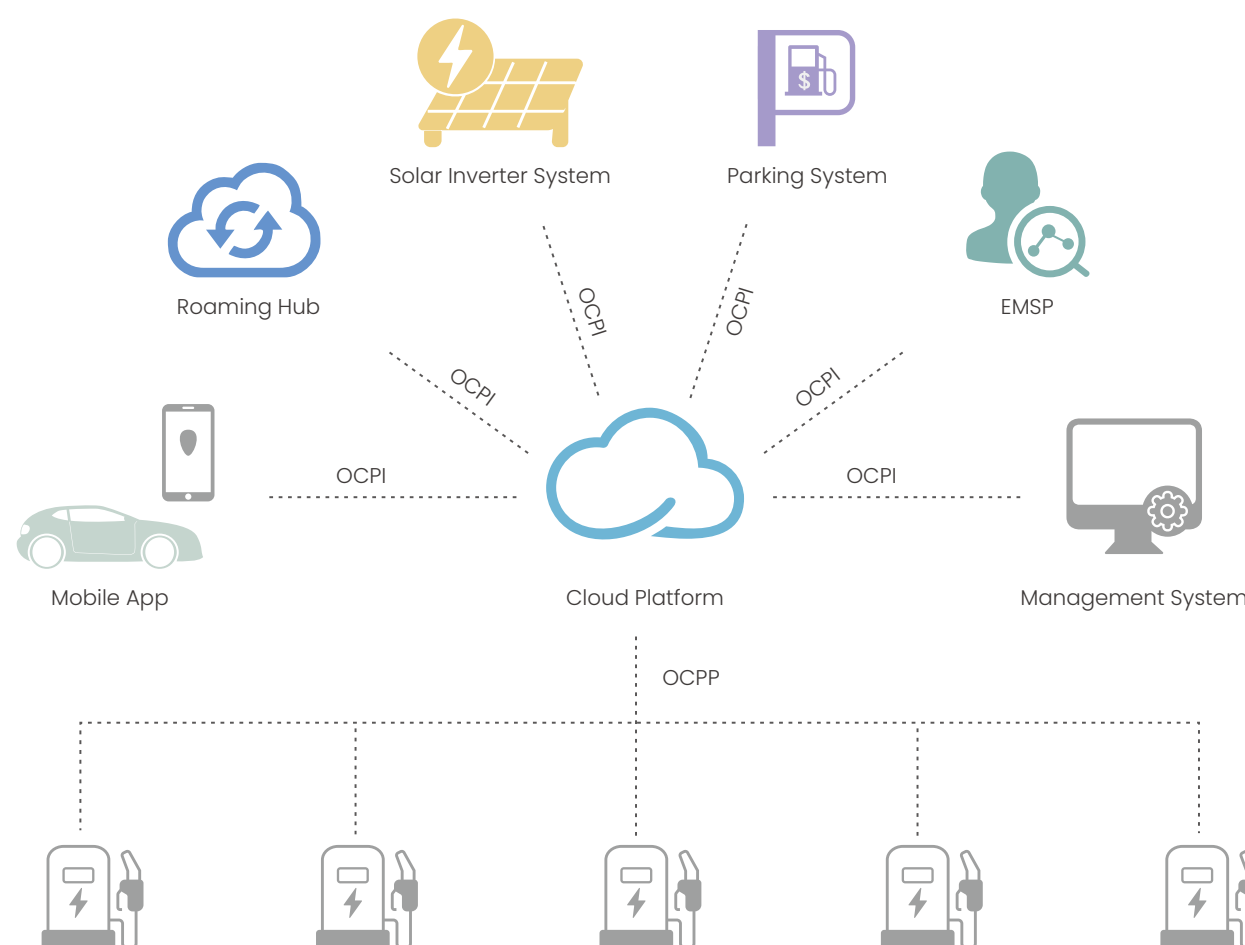
Smart O&M

- Real-time back-end monitoring of site and station data.
- Technical staff can view and analyse logs through the back-end system and resolve equipment issues via remote OTA upgrades.



Operational Data Analysis

- Customers can examine daily/monthly charge volume and revenue data by time dimension.
- Statistical data analysis at station/site level, with export support for reference purposes.



Mobile App

The charging App connects EV drivers with charging stations, so that they can easily find a charger and enjoy the charging service. It enables users to do location search, charging monitor and payment settlement. All is done in a mobile phone.

PV Green Energy

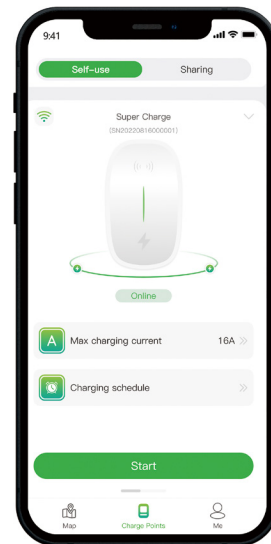
0 cost for green mode solar charging
Effective mixed mode charge with both solar and grid energy

Smart Charging

Wi-Fi | Bluetooth | Plug & Play

Scheduled Charging

Set periodic scheduled charging



Account Sign up

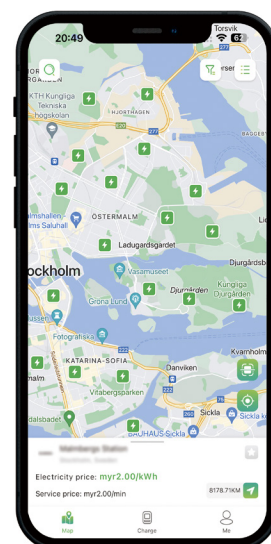
Easy sign up with a mobile phone number

Location Search

Quick search for available charging facilities

Charging Operation

Friendly interface and convenient operation



Load balancing

Support for adjusting EV charger output

Device Authorisation

Support for authorising use by friends and family

Charging Data

Facilitates maintenance and adjustment of the charge station layout.

Real Time Monitor

Real time presentation of charging consumption

Cashless Payment

Mobile payment from credit card, like Nets, PayWay Stripe

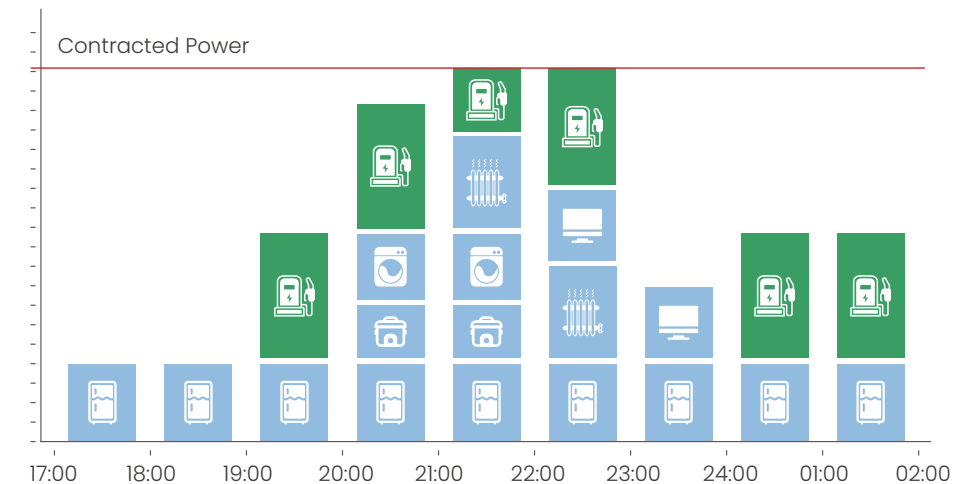
Auto Billing

Secure billing through registered account

Load Balancing Solution

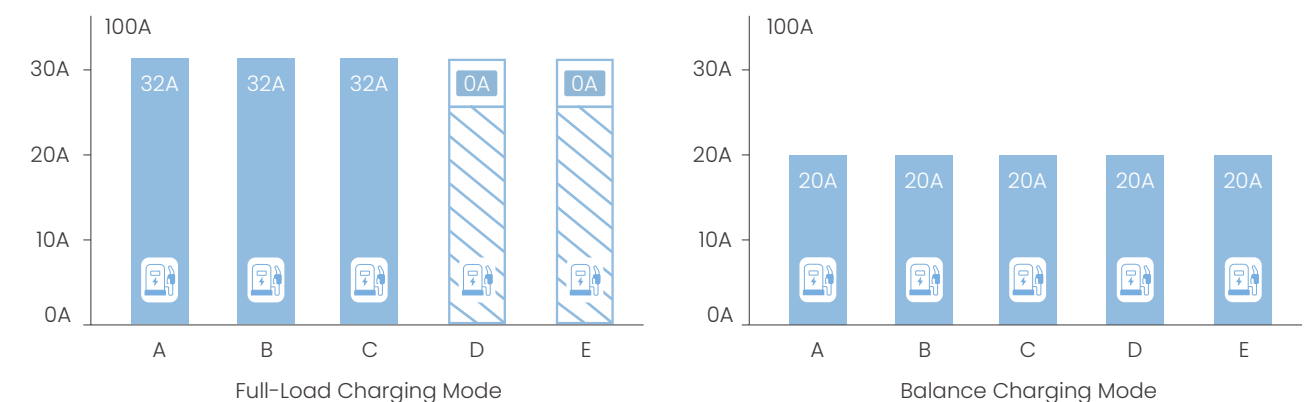
Single Charger Load Balancing Solution

When the power consumption exceeds the limit, the charger's current is restricted to protect house load.



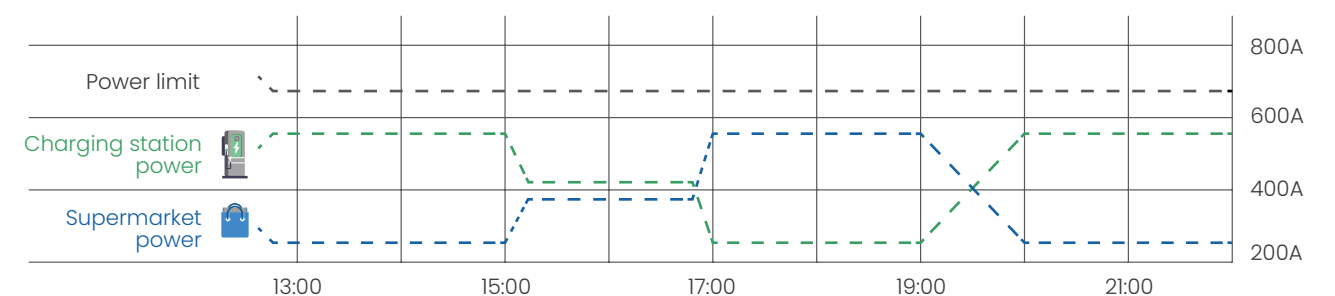
Multi-Charger Load Balancing Solution

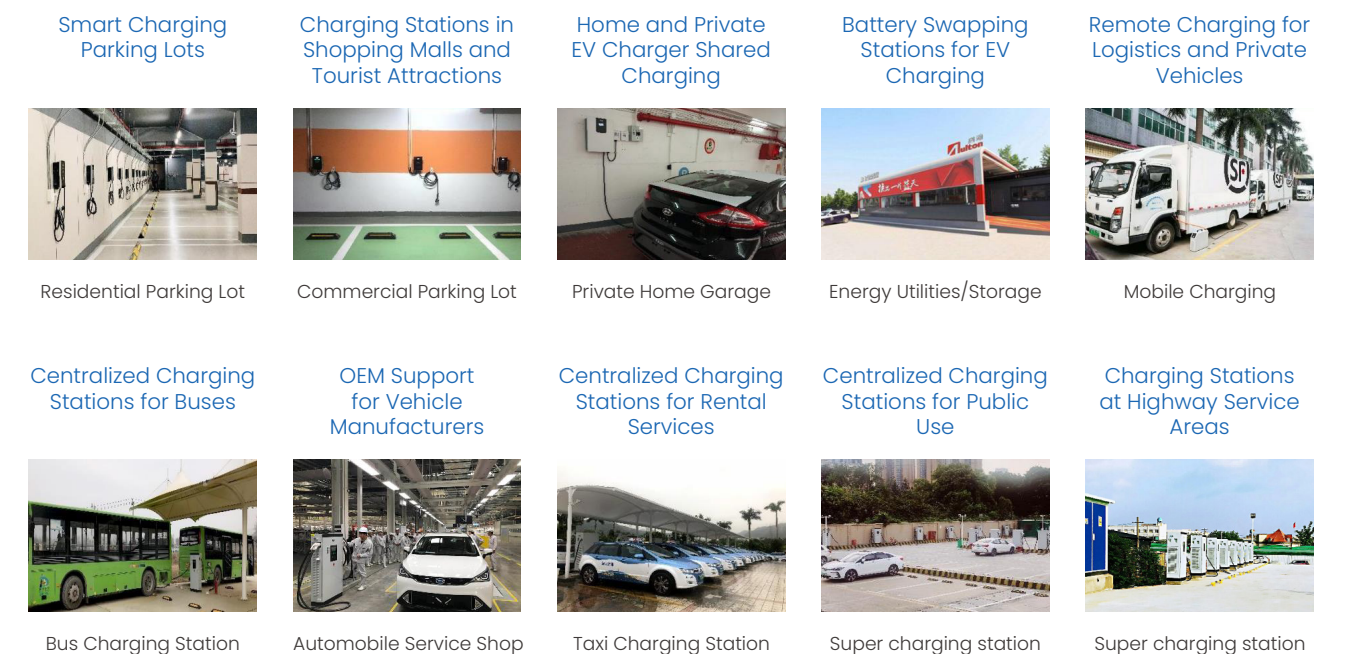
1. Full-Load Charging Mode: first come first charge, responding to different users' need.
2. Balance Charging Mode: evenly distribute power to all chargers, relieving anxieties with



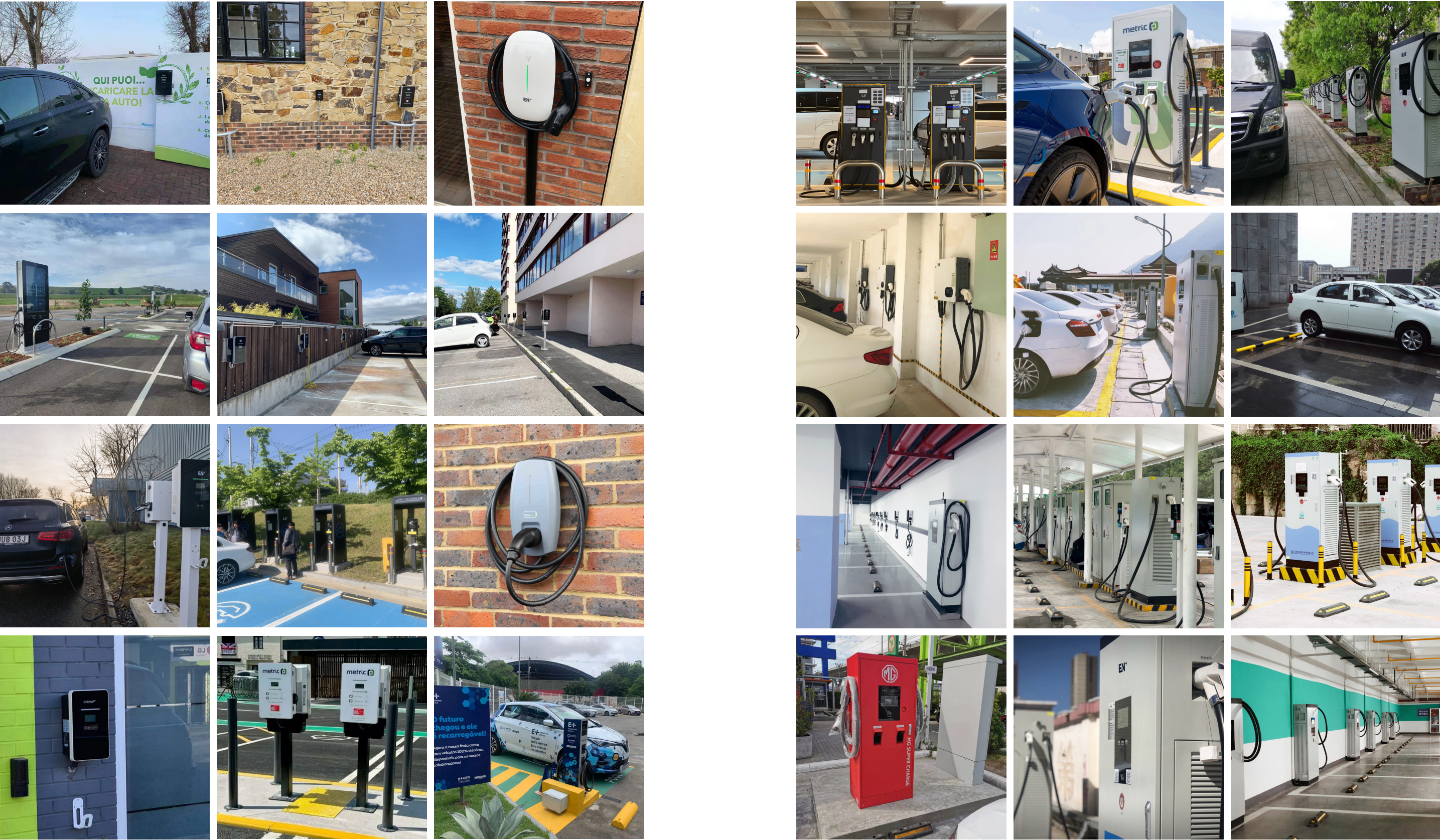
Intersite Load Balancing Solution

When there are large supermarkets or high power consuming communities around the station, the station dynamically obtains electricity consumption information from the grid and adjusts its maximum power. This solution create an electricity-friendly community by protecting the grid.



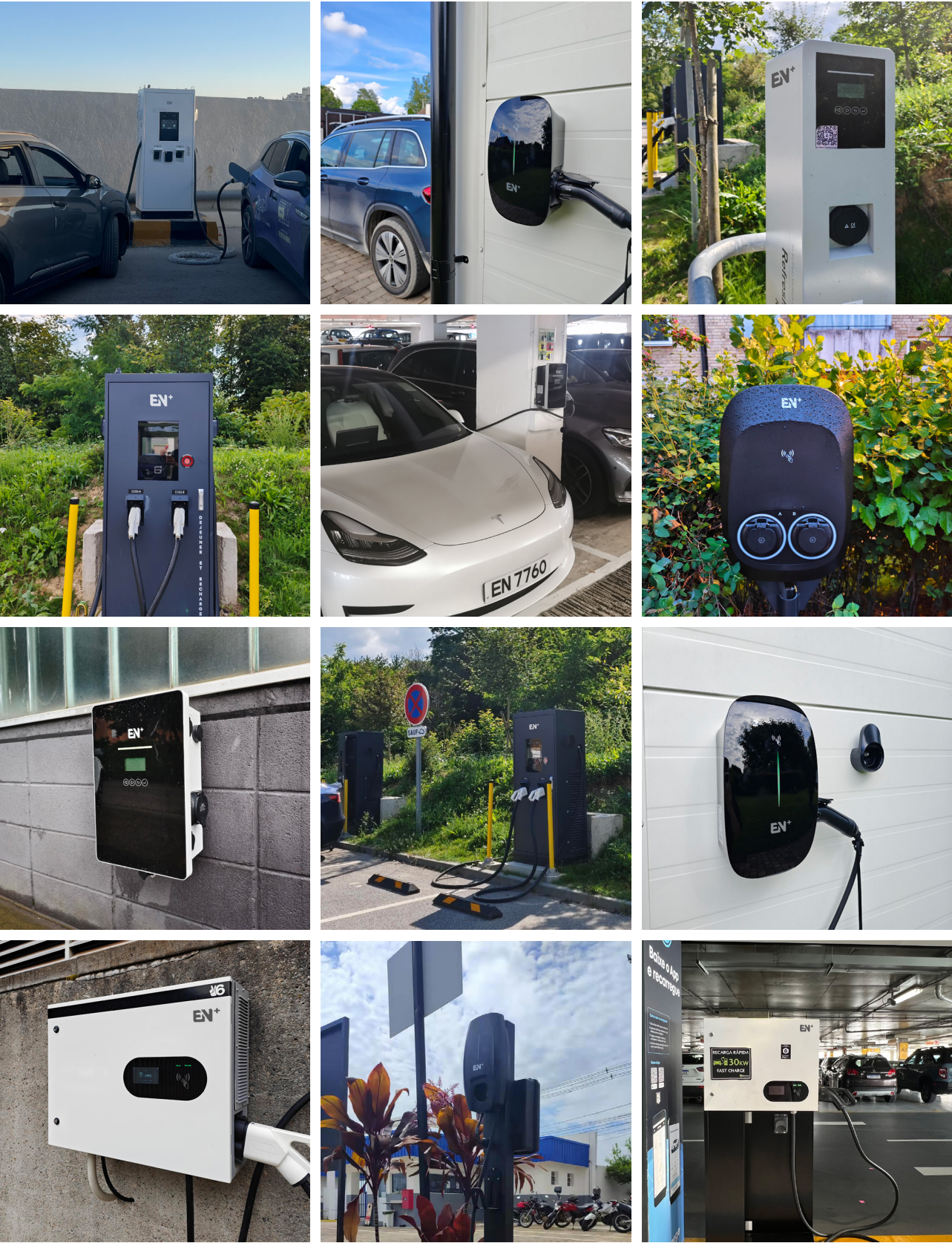


Project Cases





Project Cases



EN⁺ Shenzhen EN Plus Tech Co., Ltd.

Address: Floor 2, Building 6, No. 1026 Songbai Road, Nanshan District, Shenzhen, China.

Postal Code: 518055

Sales Representative: sales@en-plus.com.cn

After-sales Support: support@en-plus.com.cn

Website: www.en-plustech.com

Version: 2024 Rev. 09.14

